



RP

2023





Annual Exhibition 2023

**mall
galleries**



This catalogue is published to accompany the Society's Annual Exhibition at Mall Galleries, 4 to 13 May 2023

Royal Society of Portrait Painters

17 Carlton House Terrace, London SW1Y 5BD

Tel: 020 7930 6844

www.therp.co.uk

Cover painting

Anji and Brian (Study) by Emma Hopkins RP

Printed by John Good Limited

Published by the Royal Society of Portrait Painters

© 2023 Royal Society of Portrait Painters

The Royal Society of Portrait Painters
is a Registered Charity No. 327460

Royal Society of Portrait Painters

Patron: Her Majesty The Queen (1984 – 2022)

Advisory Board

Anne Beckwith-Smith LVO
Dame Elizabeth Esteve-Coll DBE
Lord Fellowes GCB GCVO QSO
Anupam Ganguli
Damon de Laszlo
The Hon Sandra de Laszlo
Philip Mould
Sir Christopher Ondaatje CBE OC
Mark Stephens CBE
Daphne J Todd OBE PPRP

President

Anthony Connolly

Vice President

Antony Williams

Honorary Secretary

Simon Davis

Honorary Treasurer and Archivist

Alastair Adams

Council

Jane Bond
Martin Brooks
Sam Dalby
Miriam Escofet
Toby Wiggins
Neale Worley

Hanging Committee

Neale Worley *Chair*
Tim Benson
Miriam Escofet
Ben Sullivan

Selection Committee

Tim Benson
Jane Bond
Anthony Connolly
Simon Davis
Miriam Escofet
Jamie Routley
Neale Worley

Prize Judging Panel 2023

Keith Breeden RP
Anthony Connolly PRP
Neil Davidson
Dr. Alison Smith, Chief Curator NPG

Exhibitions Coordinator

Alistair Redgrift

Press and Publicity

Wade PR

Commissions Consultant

Annabel Elton

FBA Trustee

Alastair Adams

Deceased Honorary Members

Sir Lawrence Alma-Tadema OM RA RWS
William Bowyer RA RWS NEAC
Maurice Bradshaw OBE
George J. D. Bruce PPRP
Derek Clarke RSW ARSA
Sir George Clausen RA
Sir Arthur Cope RA
Cowan Dobson RBA
William Dring RA RWS
Hugh de T. Glazebrook
Kenneth Green
Sir James Guthrie PRSA RA
Allan Gwynne-Jones DSO RA
J. McLure Hamilton
Claude Harrison ARCA
Augustus John OM RA
Dame Laura Knight RA RWS
Leonard C. Lindsay FSA
Sir William Llewellyn PRA
Leonard McComb RA Hon RBA
Sir John Everett Millais PRA
A. T. Nowell
Herbert A. Oliver RI
Tom Phillips CBE RA Hon PS
Sir Edward Poynter PRA RWS
Hugh G. Riviere
Carlos Sancha
C. Sanders RA
John S. Sargent RA RWS
Howard Somerville
Trevor Stubley RBA RSW RWS
A. R. Thompson RA
G. F. Watts OM RA
T. Fiddes Watt RSA
J. McNeill Whistler HRSA LL.D
Walter Woodington RBA NEAC

Past Presidents

1891 – 1904 A. Stuart Wortley
1906 – 1910 Sir W. Q. Orchardson RA HRSA
1910 – 1924 Sir James J. Shannon RA
1924 – 1930 Sir William Orpen KBE RA RHA
1932 – 1940 Sir John Lavery RA RSA RHA Etc
1944 – 1948 George Harcourt RA
1948 – 1953 Augustus John OM RA
1953 – 1965 Sir James Gunn RA LL.D
1965 – 1971 Sir William Hutchison PPRSA
1971 – 1980 Edward Halliday CBE PPRBA
1980 – 1983 Norman Hepple RA
1983 – 1991 David Poole PPRP ARCA
1991 Edward Hall
1991 – 1994 George J. D. Bruce
1994 – 2000 Daphne J. Todd OBE
2000 – 2002 Paul Brason
2002 – 2008 Andrew Festing MBE
2008 – 2014 Alastair Adams
2014 – 2017 Robin-Lee Hall
2017 – 2022 Richard Foster

Past Vice Presidents

1898 – 1934 The Hon John Collier OBE
1934 – 1944 George Harcourt RA
1944 – 1952 Sir Oswald Birley RA
1952 – 1953 T. C. Dugdale RA
1953 – 1957 Simon Elwes ARA
1959 – 1964 Sir William Hutchison PPRSA
1966 – 1980 Norman Hepple RA
1980 – 1985 John Ward CBE RA RWS
1985 – 1991 George J. D. Bruce
1991 Edward Hall
1991 – 1994 Richard Foster
1994 – 1999 Trevor Stubley RWS RBA

1999 – 2001 Paul Brason
2001 – 2002 Andrew Festing MBE
2002 – 2008 Susan Ryder NEAC
2008 – 2014 Andrew James
2014 – 2021 Simon Davis

Honorary Members 2023

David Poole PPRP
Tai Shan Schierenberg
John Wonnacott CBE

Members 2023

Alastair Adams PPRP *Hon Archivist and Treasurer*
Frances Bell RP ROI ARSMA
Tim Benson RP NEAC PROI
Jane Bond RP NEAC
Paul Brason PPRP
Keith Breeden RP
Martin Brooks RP
Peter Brown RP PNEAC PS RBA ROI
David Caldwell RP
Tom Coates RP HNEAC Hon PS Hon RBA
David Cobley RP NEAC
Anthony Connolly PRP *President*
Saied Dai RP NEAC
Sam Dalby RP
Simon Davis RP RBSA
Miriam Escofet RP
Andrew Festing MBE PPRP
Richard Foster PPRP
David Graham RP
Valeriy Gridnev RP PS ROI
James Hague RP
Robin-Lee Hall PPRP

Geoffrey Hayzer RP
Benjamin Hope RP NEAC PS ROI RSMA
Emma Hopkins RP
Sheldon Hutchinson RP
Andrew James RP NEAC
Peter Kuhfeld RP NEAC
Kathryn Kynoch RP RGI
June Mendoza OBE RP ROI Hon SWA
Anthony Morris RP NEAC
Anastasia Pollard RP
Mark Roscoe RP
Jamie Routley RP
Susan Ryder RP NEAC
Melissa Scott-Miller RP NEAC RBA
Stephen Shankland RP
Jeff Stultiens RP
Benjamin Sullivan RP NEAC
Michael Taylor RP
Daphne J Todd OBE PPRP
John Walton RP
Emma Wesley RP
Toby Wiggins RP
Antony Williams VPRP NEAC *Vice President*
Neale Worley RP NEAC
Robbie Wraith RP
Martin Yeoman RP NEAC

Honorary Trustee 2023

John Walton RP

Honorary Friends

Ms Philippa Abrahams
Ms Anne Allport
Sir Ian Amory
The Rt Hon Lord Archer of Weston Super Mare
Ms Pim Baxter
Baroness Bottomley
Gyles Brandreth Esq
Robin Buchanan-Dunlop Esq
Gerald Carroll Esq
Colonel William Chesshyre
Sir Timothy Clifford
Mrs Peter Cookson
Conrad Dehn Esq
Ms Susan Engledow
Ms Katherine Eustace
Michael Fawcett Esq
Lord Fellowes of West Stafford
Ms Frances Gandy
Dr Rita Gardner
Martin Gayford Esq
David Goldstone Esq
Philip Harley Esq
Sir Max Hastings
Sir Michael Holroyd
David Houchin Esq
Ms Sarah Howgate
Ms Dotti Irving
Mrs Lucy Jenkins

Dr Gillian Jondorf
Baroness Jowell
Sir Henry Keswick
Tim Knox
The Lady Fellowes LVO
Sir Kirby and Lady Laing
Ms Christina Leder
Professor Kenneth McConkey
David Messum Esq
Dr Mark Moody-Stuart
Ms Jans Ondaatje-Rolls
Richard Ormond Esq
William Packer Esq NEAC Hon RBA Hon PS
Ms Liz Rideal
Alasdair Riley Esq
The Hon Maurice Robson
Sir Timothy Sainsbury
Dr Charles Saumarez Smith
Sir David Scholey
The Lord Selborne
Robin Simon Esq
Peyton Skipwith Esq
Peter Spira Esq
Prof. Dame Marilyn Strathern
The Lord Vinson of Roddam Dene LVO DL
Ian Wallace Esq
Anthony Weale Esq
Duncan Wilson Esq
Andrew Wilton Esq

President's foreword

Welcome to the 2023 Annual Exhibition of The Royal Society of Portrait Painters.

No year is ever the same but there is something reassuringly constant about the RP show. Don't conflate constancy with anything ordinary, however. You will see fresh and sometimes surprising work by painters you know well, and you'll see portraits by artists who are new to you. Some will be appearing for the first time in a major international show. The RP Annual is more than ever a welcoming space for both established and emerging talent.

As you may be aware the exhibition is made up in part with the work of the members and in part from an open entry. This year we had an impressive 3466 entries for the open section, including more than 1000 from overseas. The selectors, all of whom are elected members of the Society, spent hours and hours going through all those entries and eventually chose some 400 pictures for the second round of judging. A different panel of selectors, again all elected members, convened at the Mall Galleries in early March to consider this shortlist. We finally picked out 117 pictures for inclusion in the exhibition. This was no easy process. Our aim was to find the finest examples of contemporary portraiture in all its variety and diversity. The standard was extraordinarily high and choices were difficult. So much work of real merit didn't make it through to the final selection. Huge congratulations, however, to those artists whose work did find a place in the exhibition.

I mention selection by the elected members because one of the factors which makes this Annual Exhibition special is that it is selected exclusively by practising painters. Those painters have themselves gone through the

same arduous process of selection to become members of the Society. They know what they're looking at and so inclusion in the show is a truly meaningful accolade.

The abundance of fabulous painting and drawing from which we've selected this show is the most reliable, the most tangible testament to the fact that figurative painting and portraiture in particular, is thriving. Instagram and other social media platforms present us with a huge array of extraordinary work from all over the world and I'm delighted to see so much of that work finding its way onto the walls of this gallery; the virtual being made palpable.

One of the more significant developments for 2023 is the recent appointment of our new coordinator, Luke Mills. Luke will be helping us to manage our business more effectively, particularly with regards to our online presence.

We have also recently launched a new prize for writing about portraiture, The RP Critical Writing Prize. Our hope is that this will be a contribution to informed discussion and debate about all aspects of the contemporary portrait. I would particularly like to thank Professor Alexander Marr, Laura Gascoigne and Dr Alison Smith, for their encouragement and involvement in this initiative. We are also grateful for the support given to this project by The Jackdaw and The Burlington Magazine. If you're interested in writing about art, or indeed reading about it, have a look at our website for more information.

You will notice that one wall of the gallery has been given over to a display of portraits from

The People's Portrait Collection at Girton College in Cambridge. We are very pleased to have these paintings in the show and ever grateful to those at Girton who curate the collection so beautifully.

On behalf of the Society, I would like to thank William Lock, Christopher Ondaatje, Neil Davidson of Raw Umber Studios, The de Laszlo Foundation, Smallwood Architects and the membership of the RP itself for so generously sponsoring our prizes.

Thanks too to Neale Worley, Miriam Escofet, Jane Bond and Martin Brooks who step down from Council this year. The RP is run by its membership on a voluntary basis and the contribution of those who serve on Council and in various other roles is invaluable.

The work of two deceased members is represented in the exhibition. George Bruce was a much-loved President of the Society from 1991 – 94 and is fondly remembered both for his painting and for his *joie de vivre*. Leonard McComb was an Honorary member who was well known to several current members particularly from his time as Keeper of the Royal Academy Schools.

Lastly, but by no means least, I must thank everyone at The Mall for their ever-patient help and for dealing with difficulties and complications with generosity and elan. Without that support The Royal Society of Portrait Painters would be hard pressed to mount the most significant exhibition of contemporary portraiture in the world.

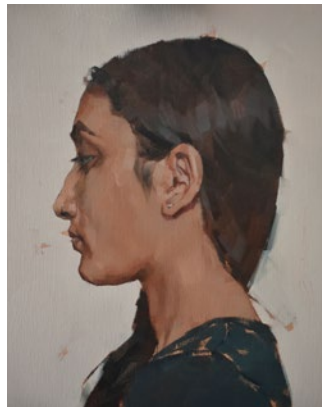
I hope you enjoy the show.

Anthony Connolly
President

Award Winners 2022



Top (left to right): **'Man and a Window'** by Lantian (The Ondaatje Prize for Portraiture); **'Micheal'** by Laura Hope (The de László Foundation Award); **'Portrait Study'** by Thomas Arthurton (The Prince of Wales's Award for Portrait Drawing); **'Gillian'** by Frances Bell (The Burke's Peerage Foundation Award for Classically Inspired Portraiture).



Bottom (left to right): **'Care'** by Catherine Creaney (The Smallwood Architects Prize for Contextual Portraiture); **'Taslina'** by Simon Davis (The RP Prize for the Best Small Portrait); **'Narcissus (Self Portrait)'** by Nneka Uzoigwe (The RP Award); **'Kupka's Dog'** by Tania Rivlis (The William Lock Portrait Prize).

The People's Portraits Collection at Girton College

To celebrate some 20 years since the People's Portraits collection was formed, this year's Annual Exhibition is able, belatedly, to include a display of 10 works selected from the collection (having been delayed by Covid restrictions).



Many will know that the home of People's Portraits is Girton College, Cambridge. Unusually, these portraits are not so much depictions of the great and good but of the folks who make up the backbone of Britain. These works are all displayed on the ground floor of the central part of the college, enriching the students' daily lives but also, importantly, open to the public.

To start at the beginning: in January 2000, finding that the world had not, in fact, ended and the 'millennial bug' had not bitten, the Royal Society of Portrait Painters opened its Millennial Exhibition at London's Mall Galleries: a specially painted, and hopefully permanent, collection, called People's Portraits. The idea had been hatched by the late Lord (Bill) Deedes, a member of our Advisory Body, and his colleague Ann Allport. The original forty-seven works were intended as a snapshot of British society at the turn of the century, as seen through the eyes of our artists. Many of the occupations represented will change beyond recognition, or disappear, in another hundred years' time. After being shown in London and touring the country for eighteen months, the collection needed a permanent home, and Professor Dame Marilyn Strathern, Mistress of Girton at the time, had the vision to bring this about at Girton. She, alongside colleagues Frances Gandy and Gillian Jondorf, surmounted the substantial

logistical and financial hurdles of protecting and presenting the collection, with specialist lighting and security measures. Her successor, Professor Susan Smith, continued to enthusiastically embrace the fruitful collaboration between Girton and the Royal Society of Portrait Painters.

Portraiture retains its fascination with a very wide section of the population, regardless of fashions in the art world. No specialist knowledge is required to ascertain whether a portrait looks 'right' or not; we are all instinctive experts in human form and proportion. Even so, practising portrait painters still can and do aspire to greatness. It is widely accepted that some of the very greatest paintings ever produced have been portraits. (Think of the *Mona Lisa* or *The girl with a pearl earring*.) Via the likes of Picasso, Giacometti, Mondrian, Spencer, Coldstream, modern portraiture has continued to develop into our own age, sometimes a fierce antithesis to photography, sometimes plundering it. Portraits, both historical and contemporary, continue to provoke, to delight and to draw crowds.

Portrait painters make their living by accepting commissions: wealth is usually the driver. Indeed the fact that Great Britain is an historically wealthy country; that after the Reformation religious subject matter largely disappeared; and that the country

retained the system of primogeniture, thus keeping stately homes and their collections intact, with their tradition of recording incumbent lords and their families; this all meant that the best of foreign portraitists were attracted here for work. The decline in commissions from the Church also forced indigenous artists to portraiture and thus portrait painting thrived in Britain, intimately bound up with the history of these islands.

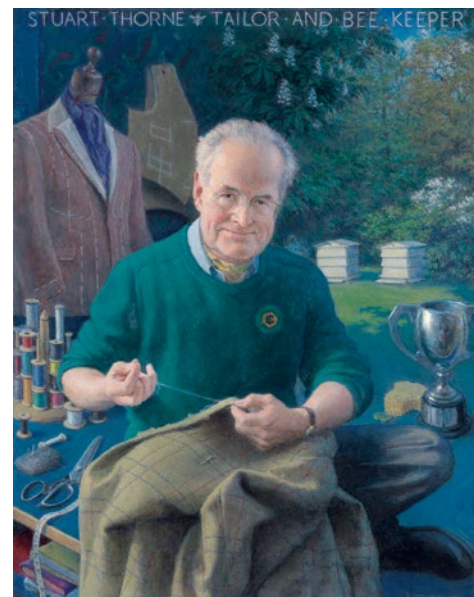
However, the 'People's Portraits' were painted for love, not money, and generously donated to the collection by members of the Royal Society of Portrait Painters. Members were invited to portray 'ordinary' people in 'ordinary' occupations, on the basis that they found their subjects inspiring. Of course, as can readily be seen, these individuals are anything but ordinary! Future generations will be fascinated, not only by their occupations and contemporary dress, but by their wonderful personalities which shine out across time.

Not quite all the original People's Portraits were retained in the permanent collection. It turned out that several artists had found it convenient to paint people close to them and were loath to part with the paintings, but almost all the founding artists have now provided excellent substitutes. One artist, the venerable John Walton, said

stoutly that he NEVER painted for free! Now it would seem that his *Stuart Thorne, tailor and beekeeper* is one of the most popular with students. The happy idea of growing the collection each year, by inviting new members to contribute a work upon their election, came from Andrew Festing during his time as RP president. It should, perhaps, be no surprise that our members are keen to be represented by their very best work, in Girton's august surroundings, uninhibited by the potential restrictions of a normal commission. This collection is probably viewed by several thousand people annually, as it continues to expand down Girton's distinctive corridors. Fortunately, there is still a long way to go!

An entry in the Visitors' Book says: 'What a wonderful exhibition. Paintings of "real" people. I loved it.'

Daphne Todd 2023



Top (left to right): Marc Crank by **Alastair Adams** in 2009; Trevor Tasker, cesspit emptier by **Daphne Todd** in 2000; Joy by **Robin-Lee Hall** in c.2010; Stuart Thorne, Tailor and Beekeeper by **John Walton** in 2013.

Painting Sir David Attenborough

The challenge was to find an artist who could create a distinctive portrait of the BBC's greatest ever communicator, a man who has no air of self-importance; and a portrait that captures this moment, as well as past great moments, in the life of Sir David Attenborough.

Annabel Elton, our Head of Commissions, guided the BBC through the process, helping with the long-listing, shortlisting, the creative process and final unveiling.

The artist selected for this commission was David Copley. On receiving the news that he had been chosen, Copley said 'If I never painted another portrait again, I would be happy; I can't think of anybody I would rather paint'. For him, it was also about the gift of seeing the world differently: 'Just as artists try and show things from a different point of view, Sir David has shown us life from a plant's perspective, from the eye of an ant, and from that of a polar bear on a drifting ice floe. He has also helped us see what a threat we have become to their very existence.'

A sitting took place in Attenborough's garden. This encounter, together with hours of studying footage, fed into a series of visuals to express Copley's ideas. These were used to work with the BBC to achieve the final image. Painting took place intensively for two months at the end of 2019 with a few last changes made in 2020. The final installation and unveiling of the portrait was delayed because of the pandemic.

In the completed portrait, we see David Attenborough with Darwin's 'Tree of Life' notebook and finches on his desk,

explaining their significance with his usual enthusiasm. He is surrounded by some of the amazing creatures he has brought to our screens, as well as by images of things that threaten the planet. He is celebrating nature's beauty, but also sharing his growing sense of its fragility.

The idea of the rainbow, which arcs across the painting, came to Copley late in the day. 'It's a unifying motif as well as a symbol of hope.'

The BBC found the support of our consultant invaluable. 'Annabel Elton was a wonderfully facilitatory guide throughout the process of this important portrait commission, helping us select the artist and remaining there as a deft and vital sounding board,' said Robert Seatter, Head of BBC History, whose role includes oversight of the BBC art collection.

We hope that you will agree that the resulting portrait more than meets the brief.

If you would like our help with a portrait commission of any kind, please contact:

Annabel Elton
Commissions Consultant

annabelelton@mallgalleries.com
020 7968 0963
www.therp.co.uk

Sir David Attenborough
by David Copley RP NEAC





The William Lock Portrait Prize

in association with

The Royal Society of Portrait Painters

The President, Council, and Members are most grateful to William Lock for extremely generously sponsoring this prize for ‘the most timeless portrait with a real feeling for paint and its aesthetic potential’.

The rather long description is intended to remind us that some of the best pictures ever painted are portraits, and that portrait painting is more than mere representation.

We look forward to encouraging excellent portraits and many outstanding prize winners.

The prize is for £20,000.

Previous Prize Winners

2021 Frances Bell RP ROI ARSMA **2022** Tania Rivilis

The de Laszlo Foundation Award

The Society wishes to acknowledge the considerable interest shown by The de Laszlo Foundation in encouraging young artists and furthering the aims of The Royal Society of Portrait Painters.

We are pleased to announce that The de Laszlo Medal for Excellence, together with a cheque for £3,000, will be awarded to the artist aged thirty five or under, judged to have submitted the best portrait.

The President, Council and members wish to express their gratitude to The de Laszlo Foundation for instigating this award.

Previous Prize Winners

(Awarded by The Carroll Foundation until 2003)

1990 David Quirke **1992** Nahem Shoa **1993** Richard Smith **1994** Haydn Cottam
1995 Antony Williams **1996** Frances Turner **1997** Francis Terry **1998** Andrew James
1999 James Lloyd **2000** T. M. J. Leveritt **2001** James Schneider **2002** Benjamin Sullivan
2003 Francisco Centofanti **2004** Brendan Kelly **2005** Emma Wesley **2006** Frances Bell
2007 Patrick Bremer **2008** Ruth Murray **2009** Emma Wesley **2010** Norman Long
2011 Martha Zmpounou **2012** David Sargerson **2013** Kelvin Okafor **2014** Flora Watson
2015 Lorna May Wadsworth **2016** Stephanie Kullberg **2017** Jamie Routley **2018** Emma Hopkins RP
2019 Joshua Waterhouse **2020** Nneka Uzoigwe **2021** Marco Bizzarri **2022** Laura Hope

The Prince of Wales's Award for Portrait Drawing

On behalf of the Royal Society of Portrait Painters, I would like to express our appreciation and thanks to King Charles III who, as The Prince of Wales, generously sponsored a prize for drawing at the Society's Annual Exhibition for more than twenty years.

The sponsorship of a prize for drawing clearly underlines an understanding of the crucial importance of drawing as a means of seeing and thinking visually.

It is fundamental to the figurative artist. It is how we discover and express meaning in the visual world.

The definition of drawing has ballooned in recent times but thanks in part to The Prince of Wales' Award for Portrait Drawing, this Society has continued to acknowledge acuity and sensitivity in this most precious of disciplines.

Below is a list of previous winners of the prize, who received a framed certificate and a cheque for £2,000.

Anthony Connolly
President

Previous Prize Winners

1999 Nicholas Cochrane **2000** Tom Coates **2001** Sheldon Hutchinson **2002** Peter Kuhfeld
2003 Warren Baldwin **2004** Anthony Connolly **2005** Toby Wiggins **2006** Thomas Lumley **2007** Saied Dai
2008 Peter Brown **2009** Neil B. Helyard **2010** Louise Yates **2011** David Miller **2012** Anthony Connolly
2013 Toby Wiggins **2014** Antony Williams **2015** Jason Bowyer **2016** Graeme Wilcox
2017 Bernadett Timko **2018** Anna Pinkster **2019** Robbie Wraith RP **2020** Jack Freeman
2021 Mantas Poderys **2022** Thomas Arthurton

SMALLWOOD ARCHITECTS

The Smallwood Architects Prize for Contextual Portraiture

The Smallwood Architects Prize is an award for a portrait in which architectural or interior features play an important part.

We are looking for the setting to enhance the human subject, creating energy and a sense of place, and perhaps giving an insight into the subject's life.

At Smallwood Architects, we are passionate about creating beautiful living environments for our clients and are highly professional in every aspect of our work.

I look forward to presenting the winner with their prize of £1,000.



Jonathan Dinnewell MBA RIBA
Smallwood Architects Ltd

Previous Prize Winners

2015 Tom Hughes **2016** Lyn Gray **2017** David Cobley RP NEAC **2018** Michael Taylor RP
2019 David Caldwell RP **2020** Steven Wood **2021** Sandra Kuck **2022** Catherine Creaney



RP Royal Society of
Portrait Painters

The RP Award

The Royal Society of Portrait Painters
is pleased to continue their £2,000 prize for portraiture,
The RP Award, for which all works shown in the
Annual Exhibition are eligible. The award will be made
to the artist whose work best represents the year's
chosen theme – which for 2023 is 'Clothing'. The judges
will be looking for the most interesting and engaging
interpretation of the idea of 'Clothing' within the
parameters of portraiture.

Previous Prize Winners

2018 Saied Dai RP NEAC **2019** James Hague RP
2020 Stephen Leho **2021** Phoebe Dickinson **2022** Nneka Uzoigwe



RP Royal Society of
Portrait Painters

The RP Prize for the Best Small Portrait

The Royal Society of Portrait Painters
is pleased to offer a prize of £2,000
to the best small portrait in the Society's
Annual Exhibition, measuring not more than
38 x 30.5 cm (15 x 12 inches) unframed.

Previous Prize Winners

2020 Robbie Wraith RP **2021** Will Calver **2022** Simon Davis

The Ondaatje Prize for Portraiture

in association with

The Royal Society of Portrait Painters

The President, Council and members are most grateful to
Sir Christopher Ondaatje CBE OC, and the Ondaatje Foundation for their
generous sponsorship of this major annual award to the painter
of the most distinguished portrait of the year.

The prize was launched in 1995 and took the form of a commission to
paint our Patron H.M. The Queen, for the Society. From 1996, the Prize has
taken the form of a cheque in addition to the Society's Medal.

This year, 2023, sees the prize money at £10,000.

Previous Prize Winners

1995 Antony Williams **1996** Desmond Healy

1997 Thom Winterburn **1998** Paul Brason **1999** John Ward CBE

2000 Leonard Rosoman OBE RA **2001** Daphne J. Todd OBE **2002** Martin Yeoman

2003 Michael Reynolds **2004** Howard J. Morgan **2005** John Wonnacott CBE

2006 Saied Dai **2007** Tom Coates **2008** James Lloyd **2009** Anastasia Pollard

2010 Robin-Lee Hall **2011** Tai Shan Schierenberg **2012** Antony Williams **2013** Mark Roscoe

2014 Jennifer McRae **2015** Brian Morris **2016** Lantian D. **2017** Shawn McGovern

2018 James Hague **2019** Peter Kuhfeld RP NEAC **2020** Shuang Liu **2021** Saied Dai RP NEAC

2022 Lantian

Raw Umber Studios Prize

in association with

The Royal Society of Portrait Painters

RAW UMBER
s t u d i o s

Raw Umber Studios believes that the most exciting contemporary portraiture lies at the intersection of technical excellence and creative expression.

Their annual prize, inaugurated in 2023, encourages and rewards such work.

Value £2,000.

Artists' General Benevolent Institution

Founded in 1814 by JMW Turner, the Artists' General Benevolent Institution provides help to professional artists and their dependants in times of difficulty.

Funds are always needed, and donations of any amount are gratefully received and acknowledged.

Please send your donation to:

The Secretary

Artists' General Benevolent Institution
15 Churton Street, Pimlico,
London SW1V 2LY

Registered Charity No. 212667

Royal Society of Portrait Painters

You may consider making a bequest to the Royal Society of Portrait Painters, which specifically promotes contemporary portraiture and receives no public funding.

If you would like further information, please write to:

Anthony Connolly RP

President

Royal Society of Portrait Painters
17 Carlton House Terrace
London SW1Y 5BD

Telephone 020 7930 6844

Registered Charity No. 327460



Annual Exhibition 2023

Alastair Adams PPRP



Baroness Sally Morgan

74 x 50 cm (29 x 20 ins)

Oil

Peter and Helen Wellby

64 x 64 cm (25 x 25 ins)

Oil



Frances Bell RP ROI ARSMA



Clemmie and Hiccup

65 x 80 cm (26 x 31 ins)
Oil on canvas



End of Lockdown

100 x 125 cm (39 x 49 ins)
Oil on canvas

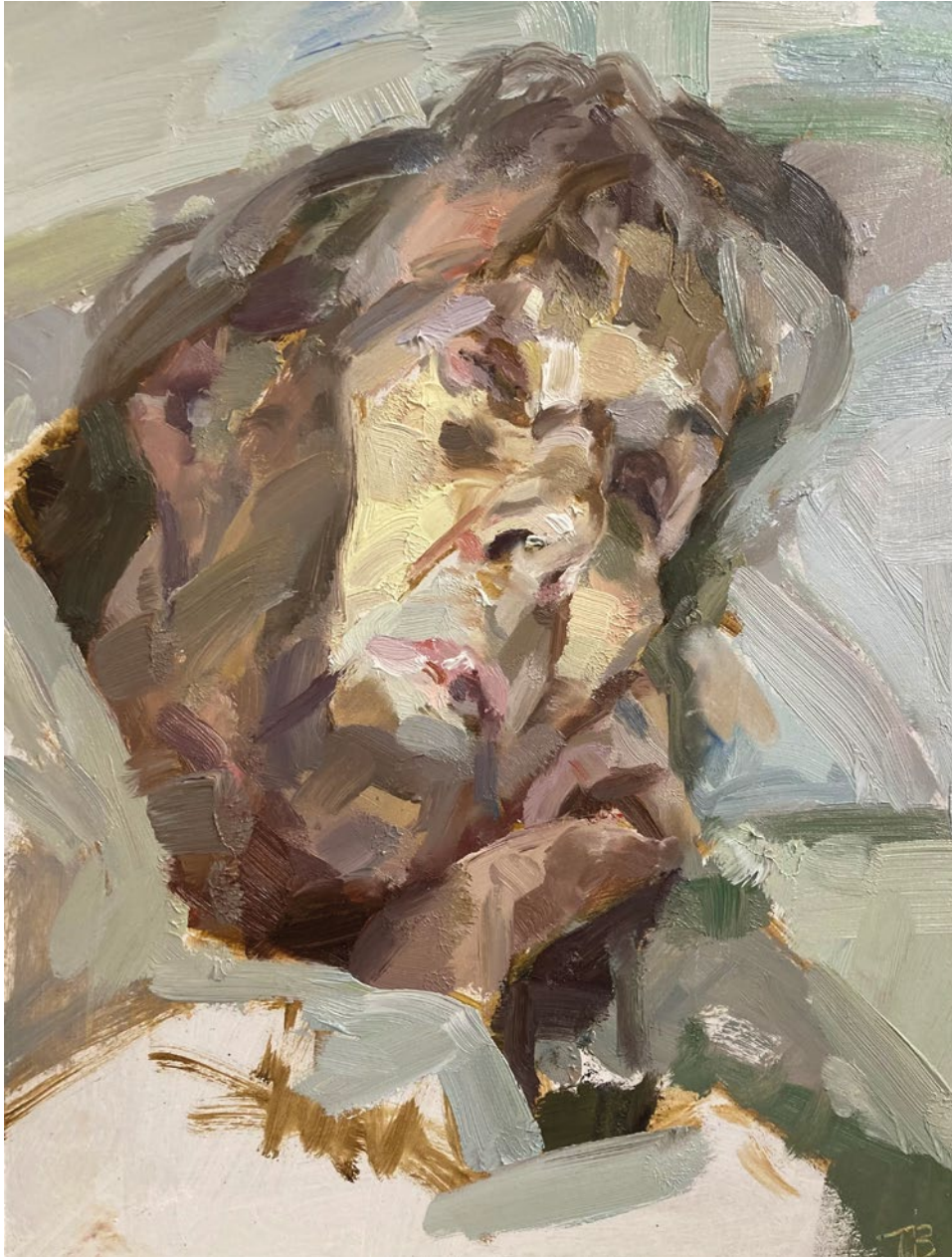
Henry Conway

100 x 75 cm (39 x 30 ins)

Oil on canvas



Tim Benson RP NEAC PROI



Mum, 2 Weeks Before She Died

40 x 30 cm (16 x 12 ins)

Oil on board

Paul Brason PPRP



Sarah Taylor (Study)

55 x 45 cm (22 x 18 ins)

Mixed media



Thea

51 x 41 cm (20 x 16 ins)

Oil on canvas

Peter Brown RP PNEAC PS RBA ROI



Lounging Round The Pool

31 x 41 cm (12 x 16 ins)

Oil on board

Christmas at Combe Park 2022

123 x 61 cm (48 x 24 ins)

Oil on canvas



David Caldwell RP



Fergie

150 x 100 cm (59 x 39 ins)

Oil on linen

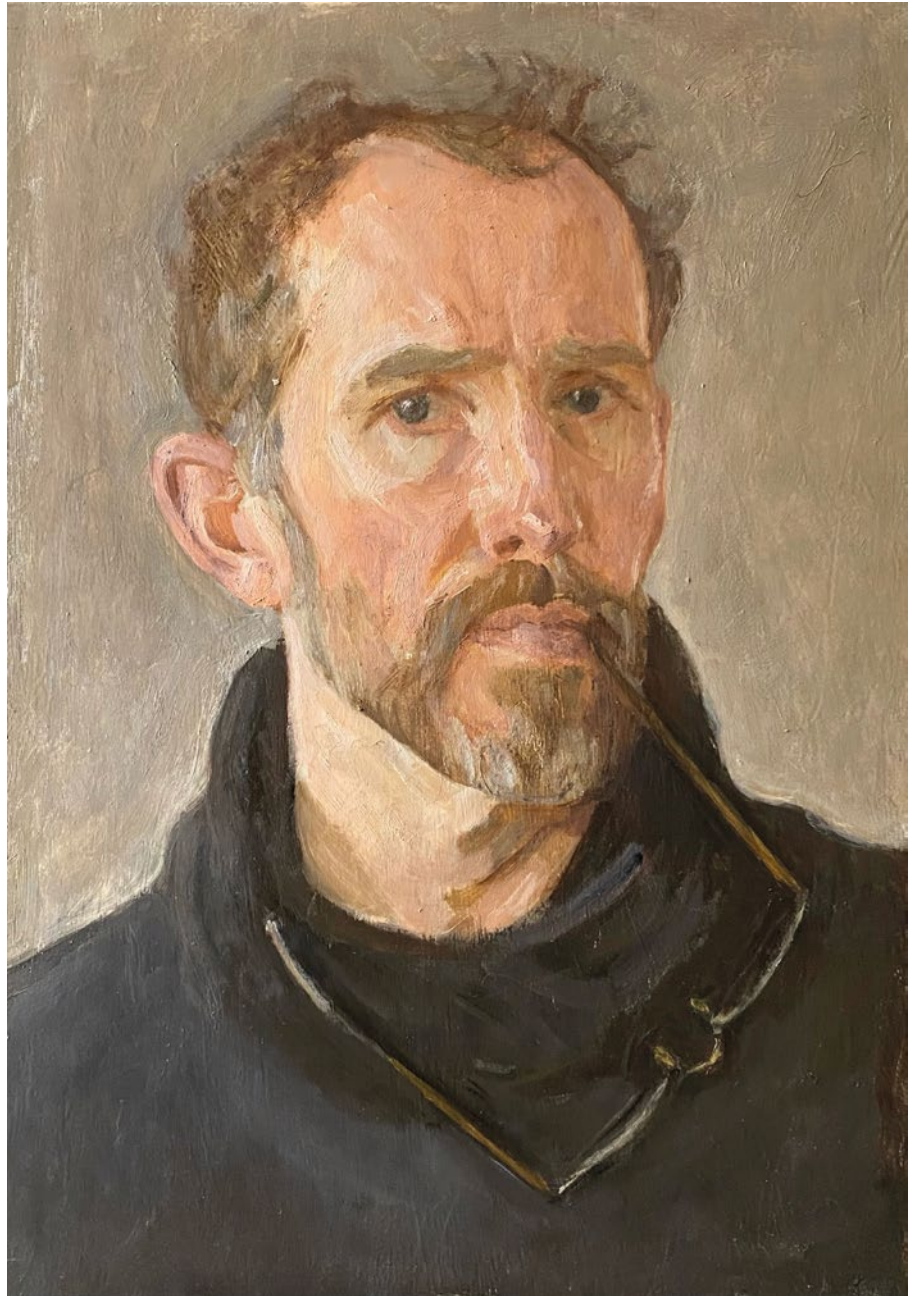
This is a portrait of my friend Fergie, an Architect in Glasgow. The painting was done from life at my studio. The sitter looks straight out at the viewer, phone and glasses in hand, paused momentarily.

Each of the props/objects in the painting have a symbolic, personal significance to the sitter, from the guitar, records and books to the belt buckle, t-shirt and even the water bottle - he had just finished an architectural project for Buxton water for which he received an award. There is also a little self-portrait of the artist at work in there too.

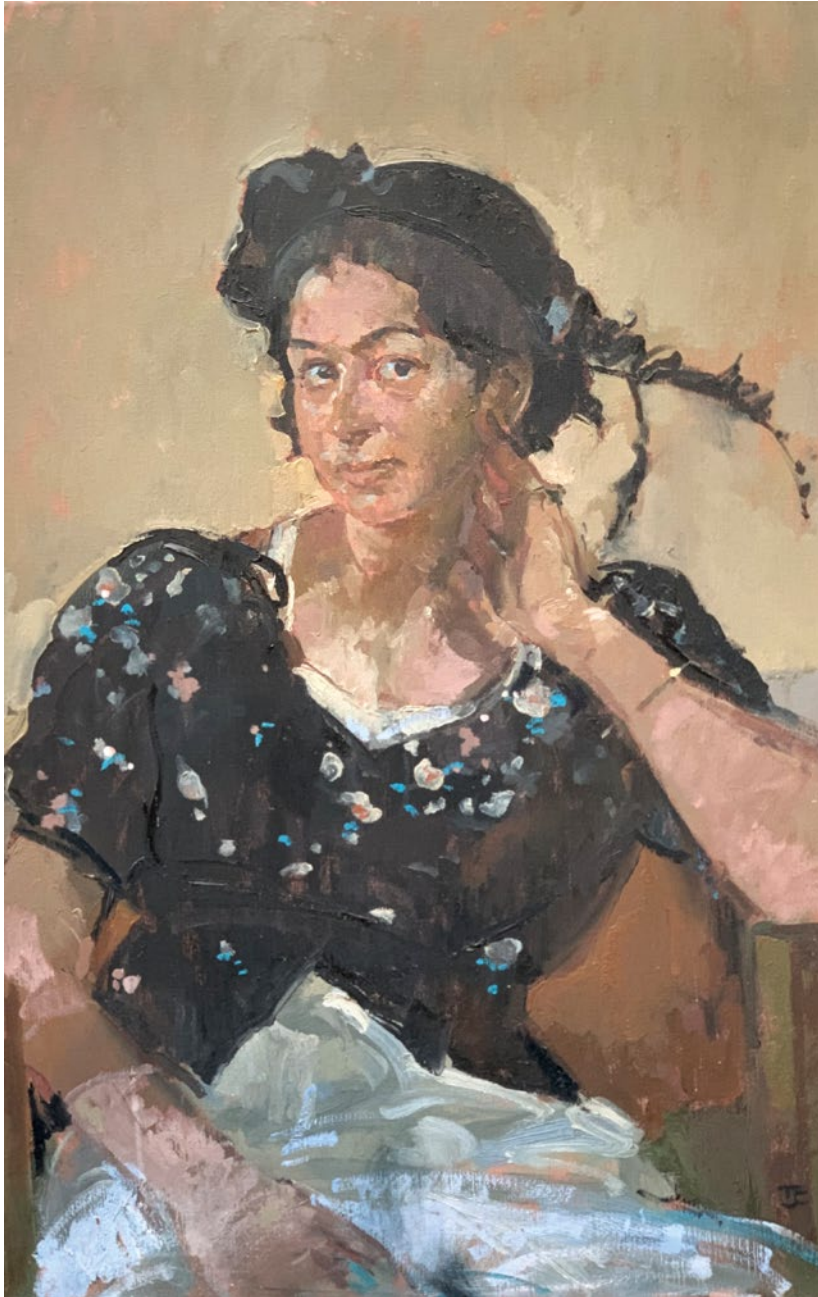
Self Portrait

35 x 25 cm (14 x 10 ins)

Oil on board



Tom Coates RP PPNEAC HRBA HRWS



Daisy, Charlotte's Sister

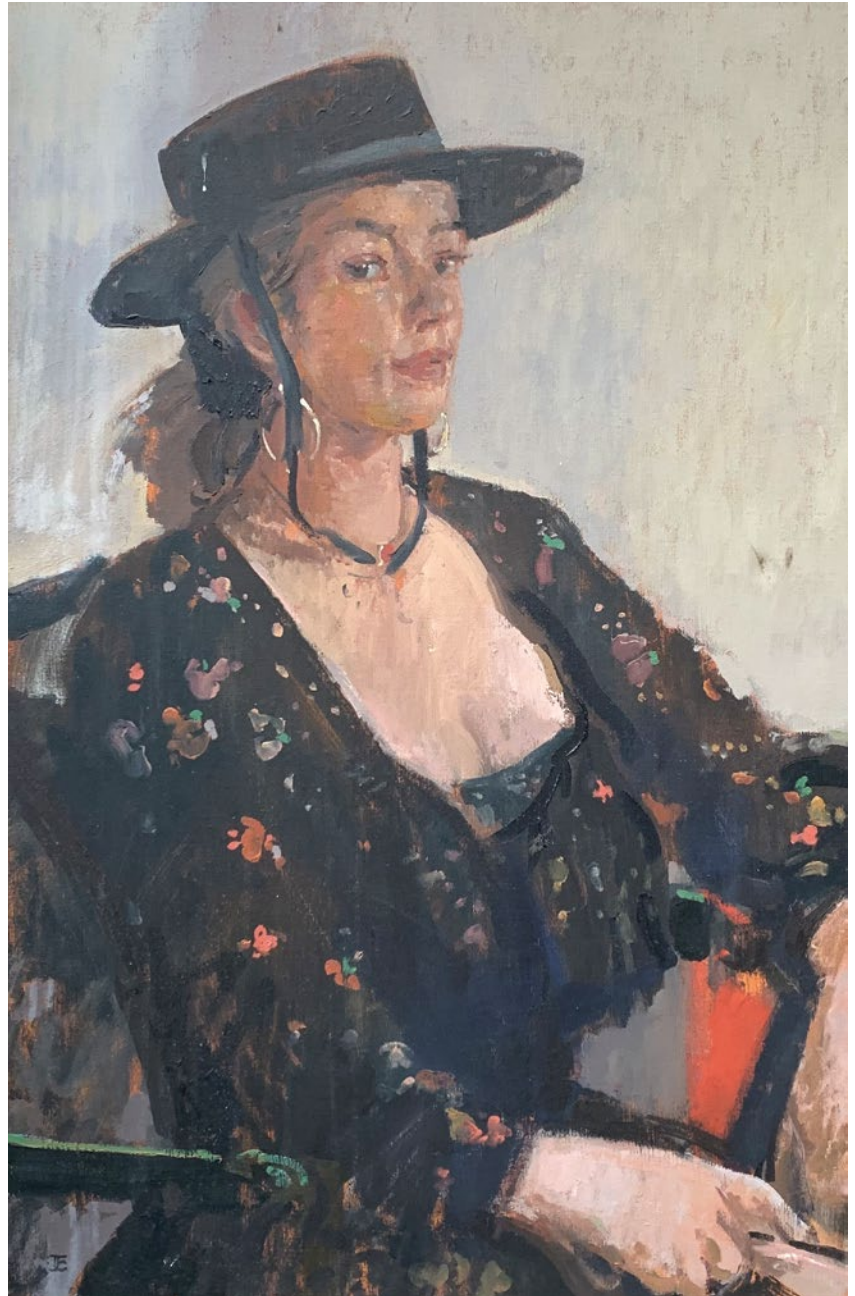
61 x 51 cm (24 x 20 ins)

Oil on canvas

My Favourite Model Charlotte

61 x 51 cm (24 x 20 ins)

Oil on canvas



David Copley RP NEAC



Study for 'Serenade'

41 x 31 cm (16 x 12 ins)

Oil on linen



Sir David, Study for BBC

81 x 97 cm (32 x 38 ins)
Oil on linen

Anthony Connolly PRP



Amelia Cecil

52 x 42 cm (20 x 17 ins)
Oil



Isabella Cecil

52 x 42 cm (20 x 17 ins)
Oil

Saied Dai RP NEAC

Charlotte

80.5 x 60.5 cm (32 x 24 ins)

Oil on linen on panel



Simon Davis RP RBSA



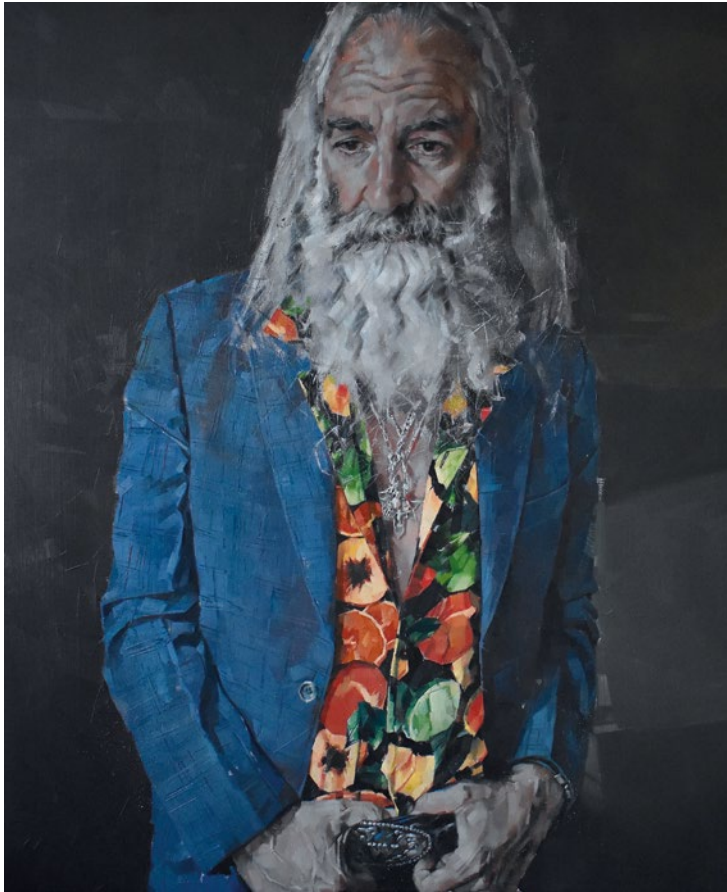
Peter Blake is 90 (A Portrait of Jason Atomic)

91 x 62 cm (36 x 24 ins)
Oil on board



Shapla

61 x 40 cm (24 x 16 ins)
Oil on board



Warren Ellis

61 x 51 cm (24 x 20 ins)
Oil on board



Winter Solstice

61 x 50 cm (24 x 20 ins)
Oil on board

Miriam Escofet RP



Elara's World

50 x 40 cm (20 x 16 ins)

Oil on linen over panel

This portrait was commissioned by Elara's grandparents. I wanted to capture her luminous colouring, personality and love of nature. The portrait's evolution spanned from ages 7 to 9.

Portrait of Prof. Sir Mark Welland,
Master of St Catharine's Cambridge

120 x 90 cm (47 x 35 ins)

Oil on linen over panel

Sir Mark Welland is a world leader in nanotechnology and was appointed Master of St Catharine's College, Cambridge in 2016. The portrait was commissioned by the College to honour his important contribution as Master and contains several biographical elements, referencing his work and life. Most interesting for me was Sir Mark's request that his family should somehow be included in the painting. The sittings took place in the Master's Lodge.



Richard Foster PPRP



Anna Sands

102 x 76 cm (40 x 30 ins)

Oil

Edward

178 x 102 cm (70 x 40 ins)

Oil



David Graham RP



Dinos Café

91 x 102 cm (36 x 40 ins)
Oil on canvas



Pearl

91 x 102 cm (36 x 40 ins)
Oil on panel



Reflection

91 x 122 cm (36 x 48 ins)
Oil on panel



Rowing on the Lake, Regent's Park

91 x 76 cm (36 x 30 ins)
Oil on canvas

Robin-Lee Hall PPRP



Sadie in her Retro Parka

26 x 20 cm (10 x 8 ins)

Egg tempera

Benjamin Hope RP NEAC PS ROI RSMA



Jeremie

56 x 41 cm (22 x 16 ins)

Oil on panel



John

76 x 51 cm (30 x 20 ins)

Oil on canvas

Emma Hopkins RP



Anji and Brian

122 x 76 cm (48 x 30 ins)

Oil on polyester

The artists Anji and Brian have been together for 26 years and have been married for the last two. The couple have a daughter together and are both good friends of mine.

Anji Richards is a portrait and figurative artist who makes intimate works that are as delicate and beautiful in nature as she is. Brian Usher expresses his artistic visions of the world through photography that displays his deep creativity and piercing gaze.

I asked to make works of Anji and Brian because I have always admired their relationship. I wanted to capture the strong bond they share as partners whilst portraying their robust individual characters.

Anji and Brian (Study)

41 x 35.5 cm (16 x 14 ins)

Charcoal, pencil and acrylic on
canvas



Kathryn Kynoch RP RGI



Andrew Wray

92 x 72 cm (36 x 28 ins)
Oil on canvas



Hannah in Red

46 x 41 cm (18 x 16 ins)
Oil on canvas

Jean in Tartan Dress

92 x 61 cm (36 x 24 ins)

Oil on canvas



June Mendoza OBE RP ROI Hon SWA



Peter and Leslie Macleod-Miller

127 x 102 cm (50 x 40 ins)

Oil

The Venerable Peter and twin, Leslie, lawyer. Both also musicians, and both generous, delightful gentlemen who, visually, were much too good to miss as subjects for a portrait: that mad hair – plus Leslie III.

Tracey O'Brien

102 x 76 cm (40 x 30 ins)

Oil

We got to know each other over the chicken counter at Asda, and Tracey, bless her, armed with uniform and bag of chicken, came to the studio and enthusiastically gave me the necessary half dozen sittings I needed for her part of the painting. Great lady.



Anthony Morris RP NEAC



Head of a Young Girl

46 x 41 cm (18 x 16 ins)

Oil



Margaret, A Pastel Study

49 x 75 cm (19 x 30 ins)

Pastel



Two Boys Watching TV

71 x 22 cm (28 x 9 ins)

Oil

Anastasia Pollard RP



Johnny

25 x 20 cm (10 x 8 ins)

Oil on panel

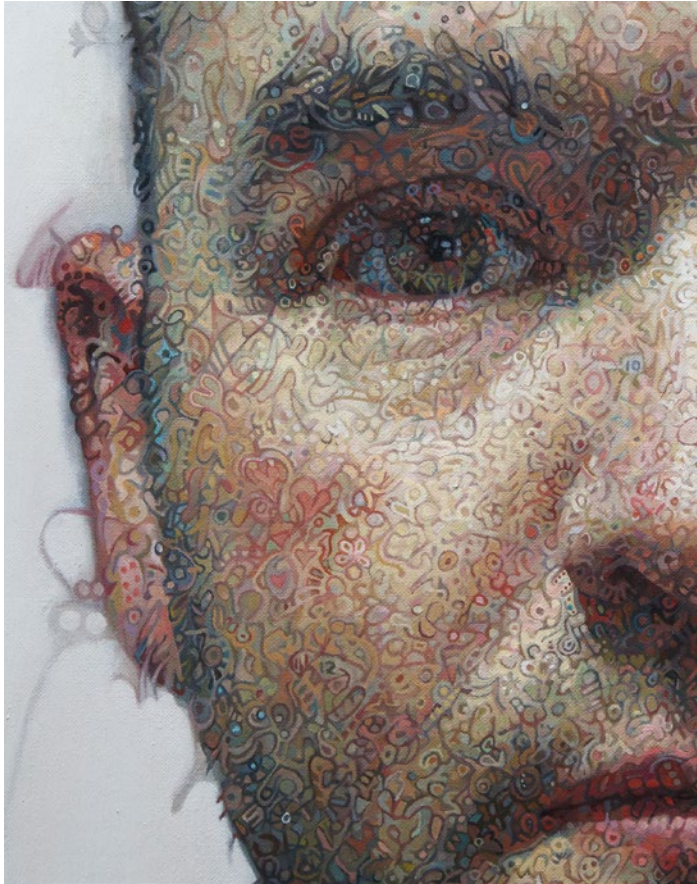


Tatiana Asleep

30 x 40 cm (12 x 16 ins)

Oil on panel

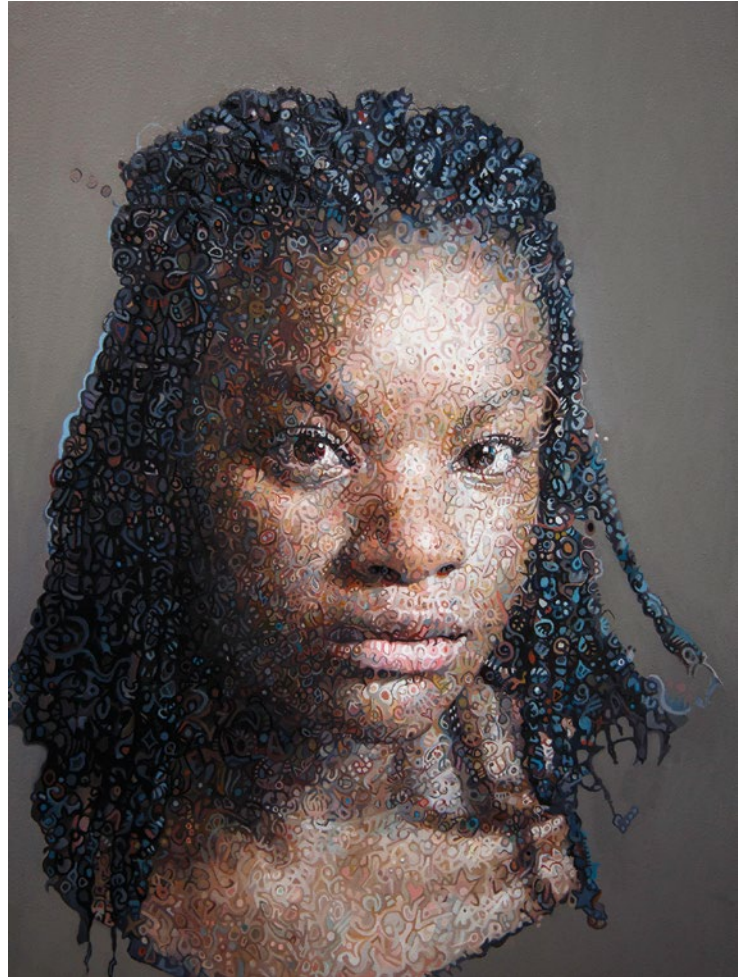
Mark Roscoe RP



Self Portrait 2023

100 x 75 cm (39 x 30 ins)
Oil on linen

This year I wanted to introduce another side of my art practice and an alternative to the representational style you might expect from me. The details in these new portraits were created through a process of free association and intuitive mark making, much like the technique used in psychoanalysis. Symbols, figures, scenes and passages of text are clearly visible at the start of the process, but are mostly hidden by the end, however, remnants do remain.



Eniola

40 x 30 cm (16 x 12 ins)
Oil on wooden panel

I first met Eniola when she was studying Chemistry at the University of Glasgow. She has a wonderfully expressive face and I have since drawn and painted her several times.



Paul Butler, Bishop of Durham

86 x 71 cm (34 x 28 ins)

Oil on linen

Paul Butler is the Bishop of Durham and a member of the House of Lords. He is known for his annual "prayer-walks" in which he spends a week each year walking round a part of his diocese praying with local people. His wife Rosemary often accompanies him and has taken it upon herself to engrave the details of each walk on the Bishops Staff, which you can see behind his left shoulder. The portrait is set in the Oratory at Auckland Castle which dates back to the 17th century.



Sedburgh School Portrait

115 x 150 cm (45 x 59 ins)

Oil on linen

Andrew Fleck, headmaster of Sedburgh School (centre) decided to break with tradition and include Peter Marshall, the Chief Operating Officer (left) and Mr Hugh Blair, the Chair of Governors (right), in his school portrait. He felt the work he had done while at the school would not have been possible without the partnership and great relationship they had. In the portrait I tried to capture their individual personalities, as well as their dynamic relationship.

Jamie Routley RP



"Daddy I miss Mummy"

101 x 132 cm (40 x 52 ins)

Oil on canvas

My wife, Catriona, is an Anaesthetic Registrar. During the pandemic she worked as an Intensive Care Registrar on the Covid Intensive care unit. We have two daughters, Ivy (7) and Margot (5).

"All of us are afraid of loss in all its forms, all of us at times are haunted or overwhelmed by the possibility of a disappearance"

David Whyte



"I do, I undo, I redo" Nicola Hicks, MBE

170 x 170 cm (67 x 67 ins)

Oil on canvas

This painting depicts the renowned British sculptor Nicola Hicks in her studio. The title "I do, I undo, I redo" references the work of Louise Bourgeois and is something of a working mantra for Nicola. Sittings took place at both Nicola's and Jamie's London studios between 2019 and 2020, with some reworking in 2021.

I was introduced to Nicola over a decade ago through our mutual friend, the artist Guy Haddon Grant. There was a wonderful few years where a group of us would meet every Monday at Nicola's studio to work from the nude model. I learnt a lot in those years from Nicola and the other artists in the group, most notably the late Tom Phillips.



Reuben

18 x 23 cm (7 x 9 ins)

Oil on wood

Susan Ryder RP NEAC



Alice and Alexander with Spindle

61 x 51 cm (24 x 20 ins)
Oil



Molly, Robin and Iris

61 x 51 cm (24 x 20 ins)
Oil



Will and Amy

64 x 76 cm (25 x 30 ins)

Oil

Melissa Scott-Miller RP NEAC RBA



Close Family

80 x 65 cm (31 x 26 ins)

Oil on canvas

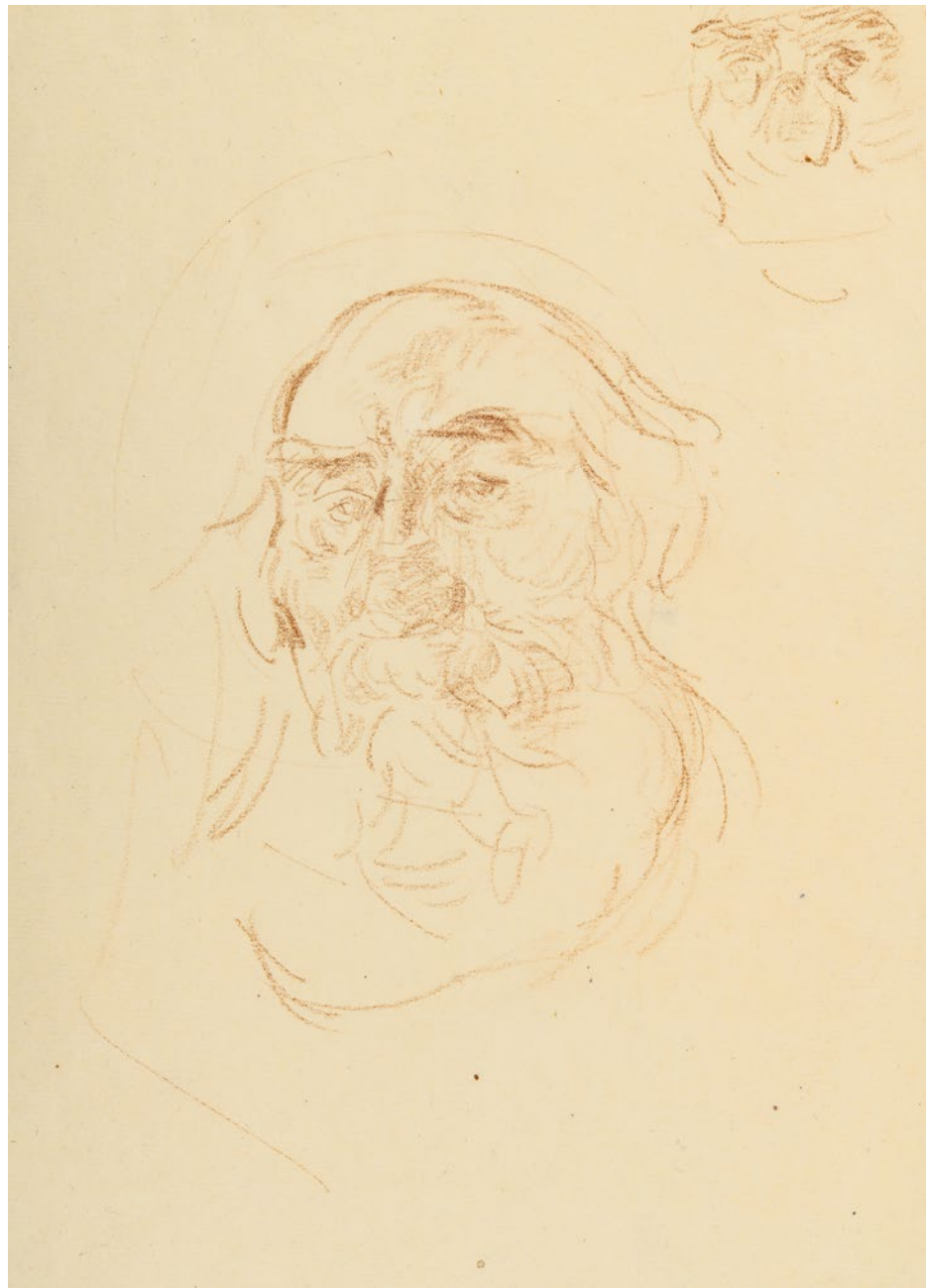
Double Self Portrait

92 x 65 cm (36 x 26 ins)

Oil on canvas



Martin Yeoman RP NEAC



Paul Milicevic

30.5 x 23 cm (12 x 9 ins)

Pastel crayon

Ben Sullivan RP NEAC

The King Family

90 x 100 cm (35 x 39 ins)

Oil on canvas



Michael Taylor RP



Caroline with Pine Cone

90 x 70 cm (35 x 28 ins)

Oil

John Walton RP

Judge Gerard Lind-Smith

54 x 69 cm (21 x 27 ins)

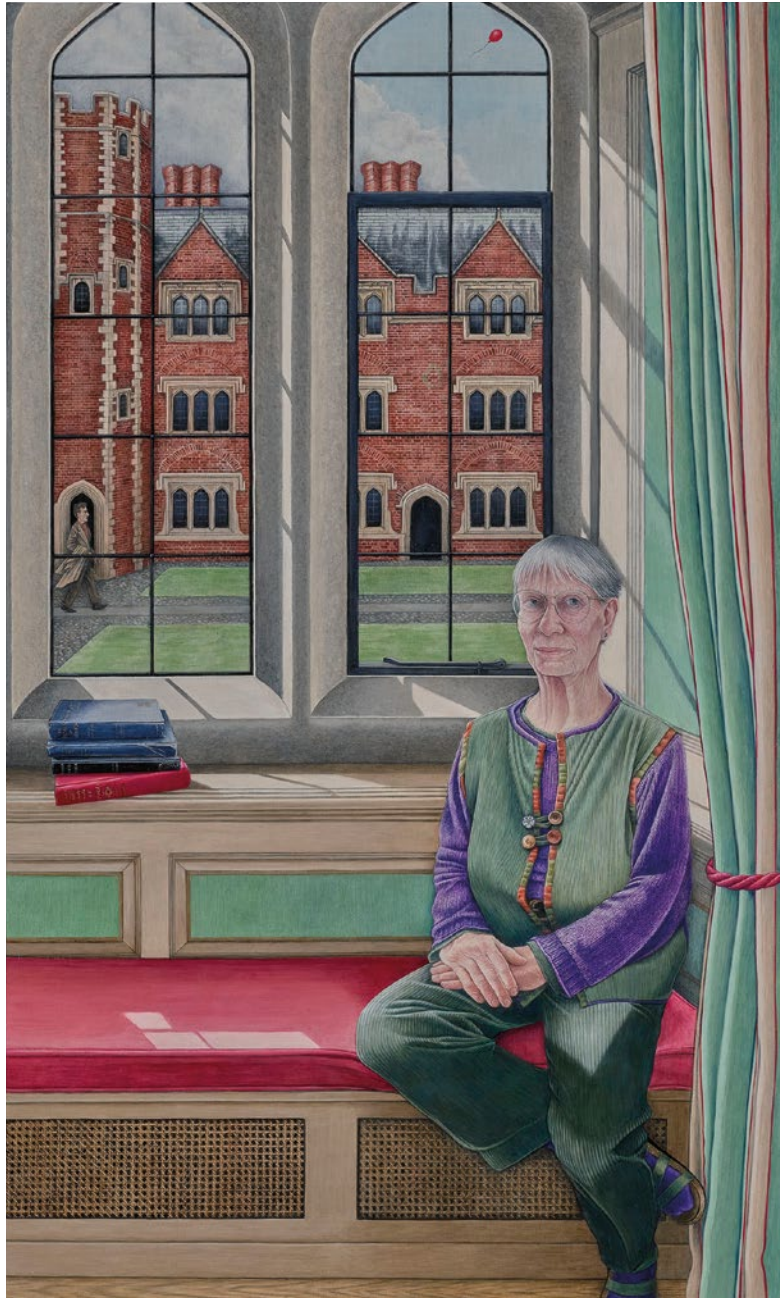
Oil

He read Law at Oxford and having been called to the bar, practiced on the Chester and Wales Circuit.

Following appointment to the County Court bench, he sat at the courts of Warwick and Coventry until his retirement.



Emma Wesley RP



Portrait of a Philosopher:
Professor Jane Heal, former
President of St John's College,
Cambridge

68.5 x 114.5 cm (27 x 45 ins)
Acrylic on board



The Indian Coat: sketch for a portrait of Susan Nisbett

59.5 x 84 cm (23 x 33 ins)

Pencil on paper

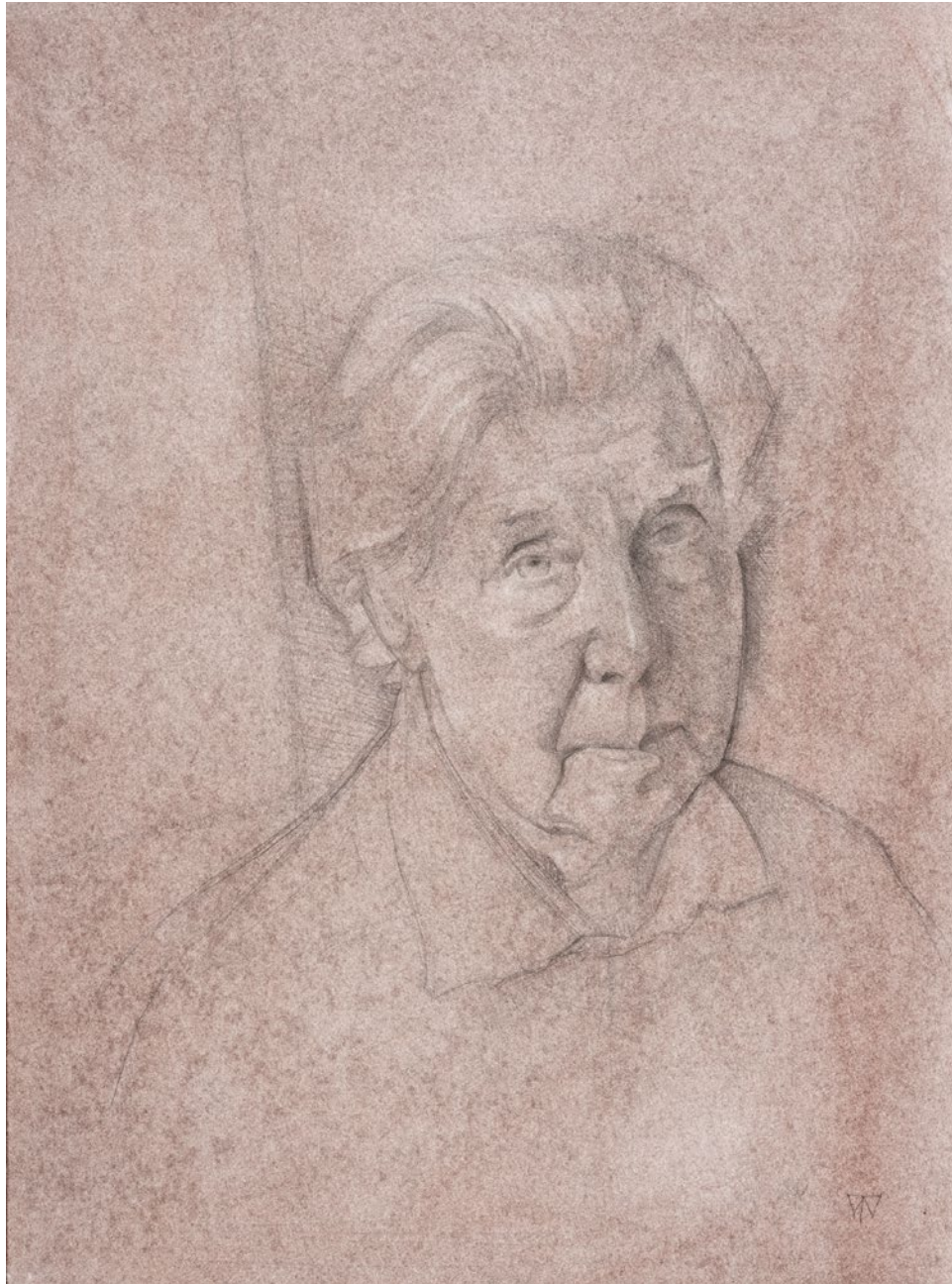


The Tartan Trousers: sketch for a portrait of Patrick Nisbett

59.5 x 84 cm (23 x 33 ins)

Pencil on paper

Toby Wiggins RP



A Preparatory Study for a Portrait of
Ronald Blythe, Author (1922 – 2023)

52 x 38 cm (20 x 15 ins)
Pencil on prepared paper

A recent sketch towards a full portrait of Ronald in his study at Bottengoms Farm, his house on the Essex/Suffolk border, inherited from his friend the painter John Nash. I visited for a few days in 2008 and he kindly let me draw and paint small studies of him. He passed away in January this year aged 100.

In his final publication 'Next to nature; a lifetime in the English Countryside' I found that he had recorded my visit!

Winter's Work; Russell Woodham at rest while laying a hazel hedge in the Dorset Style

121.5 x 151 cm (48 x 59 ins)
Oil on canvas

Russell takes a breather with his cocker spaniel Conker. He has won multiple competitions and notably for the regrowth of his hedges. The regrowth of the 'pleachers' is vital and 'all it needs is a blackbird's tongue' for the sap to rise through.

The work has barely changed in centuries. This skilled craft ensures the longevity of our native hedgerows, providing habitat and food for a multitude of mammals, birds and insects.

Work in progress.



John Wonnacott CBE Hon RP



The very white new window frame
with three reflected studio portraits

71 x 120 cm (28 x 47 ins)
Oil on canvas



Inside and out, portrait head
watching two spaces

60 x 60 cm (24 x 24 ins)
Oil on canvas



Backyard netball with builders, an old man drawing and a very old dog wandering

120 x 150 cm (47 x 59 ins)

Oil on canvas

Neale Worley RP NEAC



Louise Tantum

61 x 50 cm (24 x 20 ins)

Oil on linen

Robbie Wraith RP

Francesca 2

37 x 26 cm (15 x 10 ins)

Charcoal





Catalogue 2023

Catalogue 2023

ALASTAIR ADAMS PPRP

- 1 *Baroness Sally Morgan*
Oil
74 x 50 cm (29 x 20 ins)
NFS
- 2 *Mr James Timpson*
Oil
165 x 92 cm (65 x 36 ins)
NFS
- 3 *Peter and Helen Wellby*
Oil
64 x 64 cm (25 x 25 ins)
NFS

IMRAN ALI KAZMI

- 4 *Girl with the Red Rose*
Oil on linen
31 x 27 cm (12 x 11 ins)
£1800

RICHARD ALLEN

- 5 *Els I*
Oil on linen
48 x 30 cm (19 x 12 ins)
£1100

LAURA ARENSEN

- 6 *December's Goodbye*
Graphite and chalk on paper
45 x 30 cm (18 x 12 ins)
£2600
- 7 *Don't Tell Anyone I'm Here*
Graphite on paper
26 x 30 cm (10 x 12 ins)
£1850

PHILIPPE ATTIE

- 8 *800-pound Gorilla*
Oil on canvas
91 x 61 cm (36 x 24 ins)
NFS

JEFF AVILA

- 9 *Uneasy Sleep*
Gouache and shellac
17 x 17 cm (7 x 7 ins)
NFS

WENDY BARRATT

- 10 *Grief*
Oil on canvas
56 x 40 cm (22 x 16 ins)
£1200

CAROLINE BAYS

- 11 *Stripey T-shirt*
Oil
43 x 36 cm (17 x 14 ins)
£1900

STEWART BECKETT

Invited by Andrew James RP NEAC

- 12 *Jo in my Studio Chair*
Oil on canvas
122 x 81 cm (48 x 32 ins)
£2750

OLIVER BEDEMAN

- 13 *T'Nia Miller*
Reverse oil on glass
100 x 120 cm (39 x 47 ins)
£9500

THOMAS BEECHT

- 14 *Georg*
Oil on bitumen on wood
70 x 50 cm (28 x 20 ins)
£6000

JANE BEHARRELL

- 15 *Girl in Black*
Oil on panel
25 x 20 cm (10 x 8 ins)
£2000

CARLES BELDA

- 16 *Study for Something Never Ends*
Oil on prepared paper glued on table
19 x 15 cm (7 x 6 ins)
£1700

FRANCES BELL RP ROI ARSMA

- 17 *Clemmie and Hiccup*
Oil on canvas
65 x 80 cm (26 x 31 ins)
NFS
- 18 *End of Lockdown*
Oil on canvas
100 x 125 cm (39 x 49 ins)
NFS
- 19 *Henry Conway*
Oil on canvas
100 x 75 cm (39 x 30 ins)
NFS

TIM BENSON RP NEAC PROI

- 20 *Man Looking Down*
Oil on board
30 x 20 cm (12 x 8 ins)
£1000

- 21 *Mum*
Oil on board
30 x 20 cm (12 x 8 ins)
NFS

- 22 *Mum, 2 Weeks Before She Died*
Oil on board
40 x 30 cm (16 x 12 ins)
NFS

- 23 *Vathoulla*
Oil on canvas
80 x 60 cm (31 x 24 ins)
NFS

ASHLEY BIRCH

- 24 *Artist Mother ('In a field of its own')*
Oil on board
40 x 30 cm (16 x 12 ins)
NFS

Catalogue 2023 continued...

FRANCES BORDEN

Invited by Anthony Connolly PRP

- 25 *Bryan*
Oil on board
25.5 x 35.5 cm (10 x 14 ins)
£2400

SIMON THOMAS BRAIDEN

- 26 *Girl on a Sofa (Gemma)*
Oil on panel
49 x 45 cm (19 x 18 ins)
NFS

PAUL BRASON PPRP

- 27 *Maureen*
Oil
76 x 64 cm (30 x 25 ins)
NFS
- 28 *Sarah Taylor (Study)*
Mixed media
55 x 45 cm (22 x 18 ins)
NFS
- 29 *Thea*
Oil on canvas
51 x 41 cm (20 x 16 ins)
NFS

PETER BROWN RP PNEAC PS RBA ROI

- 30 *Christmas at Combe Park 2022*
Oil on canvas
123 x 61 cm (48 x 24 ins)
NFS
- 31 *Lounging Round the Pool*
Oil on board
31 x 41 cm (12 x 16 ins)
NFS

GEORGE BRUCE PPRP (1930–2022)

- 32 *Study for The Lord Ramsey of Canterbury 1983 (On loan from the estate of George Bruce PPRP)*
Oil
90 x 63 cm (35 x 25 ins)
NFS

ABIGAIL BURTON

- 33 *Mauricia*
Graphite on paper
49 x 36 cm (19 x 14 ins)
£500
- 34 *Priscilla*
Graphite on paper
49 x 36 cm (19 x 14 ins)
£500

HILLARY BUTTERWORTH

- 35 *Juana*
Oil on birch panel
25 x 20 cm (10 x 8 ins)
£750

DAVID CALDWELL RP

- 36 *Fergie*
Oil on linen
150 x 100 cm (59 x 39 ins)
£6000
- 37 *Gaelle*
Oil on linen
115 x 60 cm (45 x 24 ins)
£1900

- 38 *Louise at 8 1/2 Months*
Oil on linen
65 x 110 cm (26 x 43 ins)
NFS

- 39 *Self Portrait*
Oil on board
35 x 25 cm (14 x 10 ins)
£1600

STEVE CALDWELL

- 40 *June*
Acrylic on wood
18 x 13 cm (7 x 5 ins)
£1250
- 41 *Reid 2*
Acrylic on wood
30 x 21 cm (12 x 8 ins)
£1450

STEVE CANNON

- 42 *Adrian Seated*
Oil on canvas
100 x 70 cm (39 x 28 ins)
£4750
- 43 *Self Portrait with Avocado Plant*
Oil on board
41 x 23 cm (16 x 9 ins)
£1875

ANGELA CLASSI

- 44 *Gaetano*
Oil
25 x 20 cm (10 x 8 ins)
£900

JANE CLATWORTHY

- 45 *Claudio in the Red Chair*
Oil on linen
120 x 90 cm (47 x 35 ins)
£6000

DOROTHEE CLAUSS

- 46 *Alex*
Oil on linen
100 x 80 cm (39 x 31 ins)
£4900

SAM CLAYDEN

- 47 *Josh*
Oil on linen
40 x 30 cm (16 x 12 ins)
NFS

TOM CLAYTON

- 48 *Her Name was Magill*
Oil on Masonite
85 x 67 cm (33 x 26 ins)
£9500

TOM COATES RP PPNEAC HRBA HRWS

- 49 *Daisy, Charlotte's Sister*
Oil on canvas
61 x 51 cm (24 x 20 ins)
£5000

TOM COATES RP PPNEAC HRBA HRWS

- 50 *My Favourite Model Charlotte*
Oil on canvas
61 x 51 cm (24 x 20 ins)
£5000

DAVID COBLEY RP NEAC

- 51 *Study for 'Serenade'*
Oil on linen
41 x 31 cm (16 x 12 ins)
£1450
- 52 *Sir David, Study for BBC*
Oil on linen
81 x 97 cm (32 x 38 ins)
£15000

LIZZIE COLES

- 53 *Tameka*
Watercolour and graphite
42 x 21 cm (17 x 8 ins)
£650

VANIA COMORETTI

- 54 *Shadow*
Watercolour, Indian ink and pastel on paper
43 x 69 cm (17 x 27 ins)
£3600

ANTHONY CONNOLLY PRP

- 55 *Amelia Cecil*
Oil
52 x 42 cm (20 x 17 ins)
NFS
- 56 *Isabella Cecil*
Oil
52 x 42 cm (20 x 17 ins)
NFS
- 57 *Mr Frank Stratton*
Pencil and charcoal
70 x 50 cm (28 x 20 ins)
£1400

- 58 *Mr Philip Sidford*
Oil
90 x 70 cm (35 x 28 ins)
NFS

ANITA CONWAY

- 59 *Clive Myrie*
Oil on canvas panel
30 x 25 cm (12 x 10 ins)
NFS

KEN COSGROVE

- 60 *Shannon*
Pastel
45 x 30 cm (18 x 12 ins)
£625

ALAN COULSON

- 61 *Elly*
Oil on wood
122 x 93 cm (48 x 37 ins)
£8000

IAN COX**Invited by John Wonnacott CBE Hon RP**

- 62 *Matt, Bomb Disposal*
Oil on board
29 x 36 cm (11 x 14 ins)
£1500

BELINDA CROZIER

- 63 *Friday Art Club*
Oil on board
62 x 46 cm (24 x 18 ins)
£3250
- 64 *Judith*
Conte on paper
42 x 27 cm (17 x 11 ins)
£1000

ANNABEL CULLEN

- 65 *Untitled*
Oil on canvas
45 x 35 cm (18 x 14 ins)
NFS

SAIED DAI RP NEAC

- 66 *Charlotte*
Oil on linen on panel
80.5 x 60.5 cm (32 x 24 ins)
NFS

SAM DALBY RP

- 67 *Fern*
Pencil and chalk on paper
35 x 31 cm (14 x 12 ins)
NFS
- 68 *Self Portrait*
Oil on board
35 x 25 cm (14 x 10 ins)
£2000

KERRY LISA DAVIES

- 69 *Gabriel*
Oil on canvas
36 x 26 cm (14 x 10 ins)
£650

SIMON DAVIS RP RB SA

- 70 *Peter Blake is 90 (A Portrait of Jason Atomic)*
Oil on board
91 x 62 cm (36 x 24 ins)
NFS
- 71 *Shapla*
Oil on board
61 x 40 cm (24 x 16 ins)
NFS
- 72 *Warren Ellis*
Oil on board
61 x 51 cm (24 x 20 ins)
£2200
- 73 *Winter Solstice*
Oil on board
61 x 50 cm (24 x 20 ins)
£2000

Catalogue 2023 continued...

ESTELLE DAY

- 74 *Small Self Portrait in Studio*
Oil on wooden board
17 x 12 cm (7 x 5 ins)
£850

KEXIN DI

- 75 *Mama*
Oil on linen
40 x 40 cm (16 x 16 ins)
£4000

DAVIDE DI TARANTO

- 76 *Andreas*
Oil and gold leaf on aluminium
7 x 7 cm (3 x 3 ins)
£2000

- 77 *James Edward*
Oil and gold leaf on aluminium
7 x 7 cm (3 x 3 ins)
£2000

MARK DOHERTY

- 78 *Self Portrait in Studio*
Oil on canvas paper
58 x 43 cm (23 x 17 ins)
£2000

JACQUELINE BUCK DONADEO

- 79 *Enough*
Oil on canvas
25 x 20 cm (10 x 8 ins)
NFS

JOSHUA DONKOR

Invited by Miriam Escofet RP

- 80 *Aliyah Snapshot*
Oil, graphite and image
transfers on board
70 x 70 cm (28 x 28 ins)
NFS

MARK DRAISEY

- 81 *Jack*
Oil on panel
46 x 40 cm (18 x 16 ins)
£12000

- 82 *Jatinder Singh Durhailay*
Oil on panel
51 x 41 cm (20 x 16 ins)
£10000

AMY DURY

- 83 *Rae*
Oil on canvas
60 x 40 cm (24 x 16 ins)
NFS

WALLACE EJOH

- 84 *Red Shawl*
Oil on canvas
76 x 61 cm (30 x 24 ins)
£6000

MIRIAM ESCOFET RP

- 85 *Elara's World*
Oil on linen over panel
50 x 40 cm (20 x 16 ins)
NFS

- 86 *Portrait of Prof. Sir Mark Welland*
Master of St Catharine's Cambridge
Oil on linen over panel
120 x 90 cm (47 x 35 ins)
NFS

YANGTAO FEI

- 87 *The End of Life of the Father Series*
Oil on linen
150 x 150 cm (59 x 59 ins)
£35000

NANCY FLETCHER

- 88 *Portrait of Bea Otis & Rufus*
Oil
60 x 50 cm (24 x 20 ins)
NFS

RICHARD FOSTER PPRP

- 89 *Anna Sands*
Oil
102 x 76 cm (40 x 30 ins)
NFS

- 90 *Edward*
Oil
178 x 102 cm (70 x 40 ins)
NFS

DAVID GRAHAM RP

- 91 *Dinos Café*
Oil on canvas
91 x 102 cm (36 x 40 ins)
£5995

- 92 *Pearl*
Oil on panel
91 x 102 cm (36 x 40 ins)
£20000

- 93 *Reflection*
Oil on panel
91 x 122 cm (36 x 48 ins)
£8500

- 94 *Rowing on the Lake Regent's Park*
Oil on canvas
91 x 76 cm (36 x 30 ins)
£7000

ROBIN-LEE HALL PPRP

- 95 *Sadie in her Retro Parka*
Egg tempera
26 x 20 cm (10 x 8 ins)
£2500

- 96 *Yonas*
Egg tempera
20 x 15 cm (8 x 6 ins)
£2000

CLEMENTINE HANBURY

- 97 *Self Portrait at 25*
Graphite on hand-prepared paper
30 x 24 cm (12 x 9 ins)
£2000

SARAH HARDING

- 98 *Self Portrait at 64*
Oil on copper
15 x 10 cm (6 x 4 ins)
£2000

MARTYN HARRIS

- 99 *Paul's Emporium*
Oil on panel
80 x 110 cm (31 x 43 ins)
£4000

JULIA HAWKINS

- 100 *Self-portrait with Casts*
Oil
50 x 40 cm (20 x 16 ins)
£950

JAMES HAYES

- 101 *Self Portrait*
Oil
90 x 75 cm (35 x 30 ins)
£7000

AELFRED HILLMAN

- 102 *Guitarist in a Red Shirt*
Oil on board
46 x 46 cm (18 x 18 ins)
£2500

CURTIS HOLDER

- 103 *Hirsute III*
Coloured pencil on paper
72 x 51 cm (28 x 20 ins)
£1750

RUTH HOLT**Invited by Toby Wiggins RP**

- 104 *Simon*
Oil on canvas board
36 x 28 cm (14 x 11 ins)
NFS

BENJAMIN HOPE RP NEAC PS ROI RSMA

- 105 *Femi*
Oil on panel
61 x 58 cm (24 x 23 ins)
£2500

- 106 *Jeremie*
Oil on panel
56 x 41 cm (22 x 16 ins)
£2500

- 107 *John*
Oil on canvas
76 x 51 cm (30 x 20 ins)
NFS

- 108 *Self Portrait Friday Morning*
Oil on panel
36 x 25 cm (14 x 10 ins)
£1400

LAURA HOPE

- 109 *Self Portrait*
Coloured pencil, wax crayons,
gouache and oil stick on board
42 x 40 cm (17 x 16 ins)
£1000

EMMA HOPKINS RP

- 110 *Anji and Brian*
Oil on polyester
122 x 76 cm (48 x 30 ins)
NFS

- 111 *Anji and Brian (Study)*
Charcoal pencil and acrylic on canvas
41 x 35.5 cm (16 x 14 ins)
NFS

FLORENCE HOUSTON

- 112 *Bella and Bakelite*
Oil on canvas
63 x 51 cm (25 x 20 ins)
NFS

CELIA HUME

- 113 *Juniper*
Procion dye on cotton fabric with wax resist
60 x 45 cm (24 x 18 ins)
£950

ANDREW JAMES RP NEAC

- 114 *Fiona*
Oil on canvas
89 x 61 cm (35 x 24 ins)
NFS

- 115 *Fiona*
Charcoal on paper
59 x 43 cm (23 x 17 ins)
NFS

- 116 *Morning Light*
Oil on canvas on MDF
54 x 41 cm (21 x 16 ins)
£3000

HERO JOHNSON**Invited by Antony Williams RP NEAC**

- 117 *Dame Harriet Walter*
Oil on canvas
70 x 60 cm (28 x 24 ins)
NFS

- 118 *Winter PJs*
Oil on canvas
60 x 70 cm (24 x 28 ins)
NFS

JEANNIE KINSLER

- 119 *Byrne at the V&A*
Oil on canvas
70 x 50 cm (28 x 20 ins)
£2900

RICHARD KITSON

- 120 *Portrait of Suzi*
Oil on linen canvas
30 x 25 cm (12 x 10 ins)
£3000

Catalogue 2023 continued...

ANNA KORTEWEG

- 121 *Portrait of Lotus*
Watercolour on panel
30 x 24 cm (12 x 9 ins)
NFS

PETER KUHFIELD RP NEAC

- 122 *Raven*
Oil on canvas
36 x 36 cm (14 x 14 ins)
NFS

- 123 *Reverie*
Oil on panel
38 x 41 cm (15 x 16 ins)
NFS

- 124 *The English Girl*
Oil on canvas
46 x 46 cm (18 x 18 ins)
NFS

KATHRYN KYNOCH RP RGI

- 125 *Andrew Wray*
Oil on canvas
92 x 72 cm (36 x 28 ins)
£8000

- 126 *Hannah in Red*
Oil on canvas
46 x 41 cm (18 x 16 ins)
£7000

- 127 *Jean in Tartan Dress*
Oil on canvas
92 x 61 cm (36 x 24 ins)
£8000

ANNA LARIN

- 128 *Gaia*
Oil on canvas
70 x 70 cm (28 x 28 ins)
£2800

ZAC LEE

- 129 *Sunday Afternoon*
Oil on canvas
73 x 53 cm (29 x 21 ins)
£2000

STEPHEN LEHO

- 130 *Leaning on the History of Art*
Oil
77 x 67 cm (30 x 26 ins)
£5750

RHIAN LLEWELYN

Invited by John Walton RP

- 131 *Double Portrait in Studio*
Oil on canvas
102 x 82 cm (40 x 32 ins)
£2000

METTE LORENTZEN

- 132 *Mom September 2021*
Oil on linen
40 x 25 cm (16 x 10 ins)
£1200

FILIPPE LYRA

- 133 *Self-portrait with Striped Shirt*
Oil on canvas
60 x 50 cm (24 x 20 ins)
£3000

ALESSANDRA MARRUCCHI

- 134 *Self Portrait with Pearl Earring*
Oil on linen canvas
40 x 25 cm (16 x 10 ins)
NFS

IO MATHIANAKI

- 135 *In the Studio*
Oil on canvas
80 x 60 cm (31 x 24 ins)
£2200

LEONARD McCOMB HON RP RA Hon RBA (1930–2018)

- 136 *Portrait of Rebecca Hawkins 1990*
Pastel on paper
137 x 100 cm (54 x 39 ins)
NFS

KENNY MCKENDRY

- 137 *Back to the Light*
Oil on linen
43 x 31 cm (17 x 12 ins)
£2000

MICK MCNICHOLAS

- 138 *Lockdown – Self-Portrait*
Oil on plastic tile puzzle game
15 x 15 cm (6 x 6 ins)
£525

ASA MEDHURST

- 139 *Maxim with Avatars*
Oil on canvas
61 x 82 cm (24 x 32 ins)
NFS

GEORGE MELLING

- 140 *Portrait of an Unknown Painter*
Oil on canvas
50 x 37 cm (20 x 15 ins)
£2500

JUNE MENDOZA OBE RP ROI Hon SWA

- 141 *Peter and Leslie Macleod-Miller*
Oil
127 x 102 cm (50 x 40 ins)
NFS

- 142 *The Worshipful the Mayor of Merton Councillor Joan Henry*
Oil
102 x 76 cm (40 x 30 ins)
NFS

- 143 *Tracey O'Brien*
Oil
102 x 76 cm (40 x 30 ins)
NFS

JANIS MILNE

- 144 *Gazelle*
Coloured pencil on cartridge paper
59 x 42 cm (23 x 17 ins)
£300

HELENA MOOCK

- 145 *Kember's Room*
Hardground colour etching
(edition of 20, 19 available)
32 x 38 cm (13 x 15 ins)
£250 (£180 unframed)

- 146 *Self Portrait with Covid*
Colour etching (edition of 20)
35 x 35 cm (14 x 14 ins)
£275

JORDAN MORGAN

- 147 *Portrait of the Artist's Parents*
Oil on linen on panel
51 x 66 cm (20 x 26 ins)
£3250

LUIS MORRIS

- 148 *Girl on a Chair*
Oil on canvas
49 x 33 cm (19 x 13 ins)
£2000

- 149 *Self Portrait*
Oil on canvas
30 x 14 cm (12 x 6 ins)
NFS

ANTHONY MORRIS RP NEAC

- 150 *Head of a Young Girl*
Oil
46 x 41 cm (18 x 16 ins)
NFS

- 151 *Margaret, A Pastel Study*
Pastel
49 x 75 cm (19 x 30 ins)
NFS

- 152 *Two Boys Watching TV*
Oil
71 x 22 cm (28 x 9 ins)
NFS

JOE MORZUCH

- 153 *Blue Self-Portrait, 5*
Oil on canvas on panel
107 x 76 cm (42 x 30 ins)
NFS

ROBIN L MULLER

- 154 *Astrid*
Acrylic on board
51 x 45 cm (20 x 18 ins)
£750

DANIEL MUNDAY

- 155 *Intersection*
Oil on canvas
61 x 76 cm (24 x 30 ins)
£6000

JASON MUNRO

- 156 *Caspermant*
Oil on paper mounted on wood
29 x 12 cm (11 x 5 ins)
NFS

DANIEL NELIS

- 157 *Man with Closed Eyes*
Oil on panel
21 x 29 cm (8 x 11 ins)
NFS

STEFAN ORLOWSKI

- 158 *Estuary Days*
Oil on linen
98 x 75 cm (39 x 30 ins)
£5200

MUSTAFA OZEL

- 159 *Marina*
Oil on canvas
73 x 60 cm (29 x 24 ins)
£4500

- 160 *Portrait of James Bland*
Oil on canvas
35 x 27 cm (14 x 11 ins)
£2300

ORIANE PIERREPOINT

- 161 *Dr Sinan Rawi*
Oil on canvas
91 x 61 cm (36 x 24 ins)
NFS

MANTAS PODERYS

- 162 *Family at the Table – Daly MacGabhanns*
Oil on linen
40 x 200 cm (16 x 79 ins)
NFS

ANASTASIA POLLARD RP

- 163 *Byuka*
Oil on panel
25 x 20 cm (10 x 8 ins)
£1000

- 164 *Johnny*
Oil on panel
25 x 20 cm (10 x 8 ins)
NFS

- 165 *Self Portrait*
Oil on panel
25 x 20 cm (10 x 8 ins)
£1000

- 166 *Tatiana Asleep*
Oil on panel
30 x 40 cm (12 x 16 ins)
NFS

LIZ PURTILL

- 167 *Paulus Seeing Me*
Egg tempera on panel
28 x 19 cm (11 x 7 ins)
£1100

Catalogue 2023 continued...

ALLAN RAMSAY

Invited by Neale Worley RP NEAC

- 168 *Mr George Levantis*
Oil on canvas
50 x 40 cm (20 x 16 ins)
£5000

GARY HAMER REES

Invited by Anthony Morris RP NEAC

- 169 *The Witches of Flawyddog*
Oil
50 x 60 cm (20 x 24 ins)
NFS

TANIA RIVILIS

- 170 *An Endless Summer Afternoon*
Oil
50 x 50 cm (20 x 20 ins)
NFS

SAUL ROBERTSON

- 171 *Journeys*
Oil on linen
152 x 142 cm (60 x 56 ins)
£15000

ALEX ROONEY

- 172 *Henry Marsh*
Charcoal on paper
54 x 37 cm (21 x 15 ins)
NFS

MARK ROSCOE RP

- 173 *Eniola*
Oil on wooden panel
40 x 30 cm (16 x 12 ins)
£8000
- 174 *Paul Butler, Bishop of Durham*
Oil on linen
86 x 71 cm (34 x 28 ins)
NFS
- 175 *Sedburgh School Portrait*
Oil on linen
115 x 150 cm (45 x 59 ins)
NFS

- 176 *Self Portrait 2023*
Oil on linen
100 x 75 cm (39 x 30 ins)
NFS

JAMIE ROUTLEY RP

- 177 *"Daddy I miss Mummy"*
Oil on canvas
101 x 132 cm (40 x 52 ins)
£18000
- 178 *"I do, I undo, I redo" Nicola Hicks, MBE*
Oil on canvas
170 x 170 cm (67 x 67 ins)
NFS
- 179 *Private Commission*
Oil on canvas
175 x 60 cm (69 x 24 ins)
NFS
- 180 *Reuben*
Oil on wood
18 x 23 cm (7 x 9 ins)
NFS

SUSAN RYDER RP NEAC

- 181 *Alice and Alexander with Spindle*
Oil
61 x 51 cm (24 x 20 ins)
NFS
- 182 *Molly, Robin and Iris*
Oil
61 x 51 cm (24 x 20 ins)
NFS
- 183 *Will and Amy*
Oil
64 x 76 cm (25 x 30 ins)
NFS

MELISSA SCOTT-MILLER RP NEAC RBA

- 184 *Close Family*
Oil on canvas
80 x 65 cm (31 x 26 ins)
NFS

- 185 *Double Self Portrait*
Oil on canvas
92 x 65 cm (36 x 26 ins)
£4000

DANIEL SHADBOLT

- 186 *Catherine*
Oil on canvas
90 x 65 cm (35 x 26 ins)
£1600

SARAH SHAW

- 187 *Portrait of J.P*
Oil on wood panel
27 x 27 cm (11 x 11 ins)
£895

TUCKER RILEY SHOPE

- 188 *Portrait of Claudio*
Oil on linen
70 x 60 cm (28 x 24 ins)
£3000

VALERIE SIDEL

- 189 *Halya*
Oil on panel
21 x 13 cm (8 x 5 ins)
£5000
- 190 *Mama*
Oil on panel
25 x 25 cm (10 x 10 ins)
£8000

HATTIE SLATER

- 191 *Soldiers*
Oil on paper
60 x 42 cm (24 x 17 ins)
£700

PAUL P SMITH

- 192 *Portrait of Vanessa Lubach*
Oil on Canvas
96 x 61 cm (38 x 24 ins)
£4000

ELAINE PREECE STANLEY RCA

Invited by Robin-Lee Hall PPRP

- 193 *Girl in Blue Anorak*
Egg tempera
33 x 35 cm (13 x 14 ins)
NFS

BARBARA STERN

- 194 *The Wisdom*
Oil on canvas
90 x 90 cm (35 x 35 ins)
£5000

MILENKO STEVANOVIC

- 195 *Leontios and Michalis*
Oil on canvas
190 x 100 cm (75 x 39 ins)
£11000

PHOEBE-LOUISE STEWART CARTER

- 196 *Self Portrait in the Winter*
Oil on linen
85 x 50 cm (33 x 20 ins)
NFS

LUCY STOPFORD

- 197 *Artist's Son*
Oil on canvas
38 x 29 cm (15 x 11 ins)
£1500

- 198 *Fred*
Oil on canvas
48 x 30 cm (19 x 12 ins)
£1500

JEFF STULTIENS RP

- 199 *Rudi Szczerba - 50 yr Alumnus*
Oil on canvas
81 x 61 cm (32 x 24 ins)
NFS

BENJAMIN SULLIVAN RP NEAC

- 200 *The King Family*
Oil on canvas
90 x 100 cm (35 x 39 ins)
NFS

GINA TAWN

Invited by Sam Dalby RP

- 201 *Fraon*
Oil
42 x 66 cm (17 x 26 ins)
£900

MICHAEL TAYLOR RP

- 202 *Caroline with Pine Cone*
Oil
90 x 70 cm (35 x 28 ins)
£14000

BERNADETT TIMKO

- 203 *Jimmy*
Oil on board
33 x 25 cm (13 x 10 ins)
£580

CRISTINA VERCESI

- 204 *Reflection*
Oil on linen on board
53 x 35 cm (21 x 14 ins)
£1400

JOHN WALTON RP

- 205 *Judge Gerard Lind-Smith*
Oil
54 x 69 cm (21 x 27 ins)
NFS

BINHONG WANG

- 206 *Journey*
Oil on linen
60 x 40 cm (24 x 16 ins)
NFS

YIN WANG

Invited by Art Academy London

- 207 *The Family*
Oil on canvas
100 x 120 cm (39 x 47 ins)
NFS

JOSHUA WATERHOUSE

- 208 *The Surgeon*
Oil on wood panel
100 x 90 cm (39 x 35 ins)
NFS

ROSALIE WATKINS

- 209 *Jessica*
Oil on canvas
167 x 85 cm (66 x 33 ins)
NFS

MIKE WATTLES

- 210 *Sculpture*
Oil on canvas
45 x 35 cm (18 x 14 ins)
£2000

AMANDA WEBSTER

Invited by Melissa Scott-Miller RP NEAC RBA

- 211 *My Child*
Oil on canvas
51 x 41 cm (20 x 16 ins)
£1800

EMMA WESLEY RP

- 212 *Portrait of a Philosopher: Professor Jane Heal former President of St John's College Cambridge*
Acrylic on board
68.5 x 114.5 cm (27 x 45 ins)
NFS

- 213 *The Indian Coat: sketch for a portrait of Susan Nisbett*
Pencil on paper
59.5 x 84 cm (23 x 33 ins)
NFS

- 214 *The Tartan Trousers: sketch for a portrait of Patrick Nisbett*
Pencil on paper
59.5 x 84 cm (23 x 33 ins)
NFS

Catalogue 2023 continued...

TOBY WIGGINS RP

215 *A Blackbird's Tongue; Russell Woodham, The Dorset Hedgelay*
Pencil charcoal ink on prepared paper
77 x 57 cm (30 x 22 ins)
POA

216 *A Preparatory Study for a Portrait of Ronald Blythe, Author (1922 – 2023)*
Pencil on prepared paper
52 x 38 cm (20 x 15 ins)
POA

217 *Richard Scrope*
Oil on gesso panel
36 x 25 cm (14 x 10 ins)
NFS

218 *Winter's Work; Russell Woodham at rest while laying a hazel hedge in the Dorset Style (work in progress)*
Oil on canvas
121.5 x 151 cm (48 x 59 ins)
POA

GRAEME WILCOX

219 *D in Stripes*
Oil
140 x 100 cm (55 x 39 ins)
£9000

ANTONY WILLIAMS RP NEAC

220 *Eli*
Egg tempera
39 x 28 cm (15 x 11 ins)
NFS

221 *Jacqueline*
Egg tempera
26 x 33 cm (10 x 13 ins)
NFS

SOPHIE WILLIAMS

222 *Brother in Stripy T-Shirt*
Oil on paper
31 x 21 cm (12 x 8 ins)
NFS

JOHN WONNACOTT CBE HON RP

223 *Backyard netball with builders, an old man drawing and a very old dog wandering*
Oil on canvas
120 x 150 cm (47 x 59 ins)
NFS

224 *Inside and out, portrait head watching two spaces*
Oil on canvas
60 x 60 cm (24 x 24 ins)
NFS

225 *The very white new window frame with three reflected studio portraits*
Oil on canvas
71 x 120 cm (28 x 47 ins)
NFS

STEVEN WOOD

226 *Aster*
Oil on canvas
160 x 100 cm (63 x 39 ins)
NFS

NEALE WORLEY RP NEAC

227 *Louise Tantum*
Oil on linen
61 x 50 cm (24 x 20 ins)
NFS

228 *Mat*
Oil on linen
30 x 20 cm (12 x 8 ins)
NFS

ROBBIE WRAITH RP

229 *Francesca 1*
Oil
61 x 46 cm (24 x 18 ins)
NFS

230 *Francesca 2*
Charcoal
37 x 26 cm (15 x 10 ins)
NFS

231 *Portrait*
Oil
20 x 14 cm (8 x 6 ins)
NFS

232 *Portrait Studies*
Charcoal
49 x 34 cm (19 x 13 ins)
NFS

MARTIN YEOMAN RP NEAC

233 *Paul Milicevic*
Pastel crayon
30.5 x 23 cm (12 x 9 ins)
NFS

FLORENCE YUQING

234 *Clementine*
Watercolour on paper
30 x 21 cm (12 x 8 ins)
£1000

235 *Self Portrait*
Watercolour on paper
30 x 21 cm (12 x 8 ins)
£1300

MONICA ZEOLI

236 *Carnage*
Pencil and charcoal
35 x 27 cm (14 x 11 ins)
£480

CONGRAN ZHOU

237 *Grandma*
Oil on linen
105 x 85 cm (41 x 33 ins)
£35755

On loan from the People's Portraits collection

ALASTAIR ADAMS PPRP

238 *Marc Crank (2009)*
Oil
126 x 106 cm (50 x 42 ins)
NFS

JANE BOND RP NEAC

239 *Fran Maranzi, motorbike dispatch controller (2000)*
Oil
180 x 73.5 cm (71 x 29 ins)
NFS

PAUL BRASON PPRP

240 *Gerald Ball, garage proprietor (1999)*
Oil
55 x 49 cm (22 x 19 ins)
NFS

DAVID CALDWELL RP

241 *The Boxer [portrait of Anthony] (c.2018)*
Oil
190.5 x 141 cm (75 x 56 ins)
NFS

TOM COATES RP PPNEAC HRBA HRWS

242 *Peter Faulkner, coracle-maker (2000)*
Oil
65 x 65 cm (26 x 26 ins)
NFS

SIMON DAVIS RP RBSA

243 *Fishsale: portrait of Elaine Lorys (2008)*
Oil
58 x 43 cm (23 x 17 ins)
NFS

ROBIN-LEE HALL PPRP

244 *Joy (c.2010)*
Egg tempera
88 x 78 cm (35 x 31 ins)
NFS

DAPHNE TODD OBE PPRP

245 *Trevor Tasker, cesspit emptier (2000)*
Oil
166 x 116 cm (65 x 46 ins)
NFS

JOHN WALTON RP

246 *Stuart Thorne, Tailor and Beekeeper (2013)*
Oil
62 x 52 cm (24 x 20 ins)
NFS

EMMA WESLEY RP

247 *The Painting Analyst: Portrait of Libby Sheldon (c.2003)*
Acrylic
121 x 75.5 cm (48 x 30 ins)
NFS

A close-up, over-the-shoulder view of an artist with dark hair and glasses, wearing a grey shirt, painting a portrait. The artist is holding a paintbrush and applying paint to the nose of a subject. The portrait is rendered in a contemporary, expressive style with visible brushstrokes and a mix of colors like yellow, orange, and purple. The background is a soft, out-of-focus blue.

ART ACADEMY
LONDON

BA (HONS)
CONTEMPORARY PORTRAITURE

Embrace the diversity of contemporary art practices while learning the technical and creative skills needed to become a portrait painter in this one-of-a-kind specialist programme.

Our teaching approach is unique: we keep our class sizes small, and you'll benefit from the highest tutor contact hours of any higher education art course in the UK.

academiccourses@artacademy.org.uk
www.artacademy.ac.uk



MICHAEL HARDING OIL PAINTS



ARTIST: MITCH GRIFFITHS

MICHAELHARDING.CO.UK



Driven by innovation,
a synthetic brush that
performs at a
professional level

Using our unique brush making expertise to provide artists an innovative alternative: the new Artists' Oil Synthetic Hog brush range. Available in a range of sizes across six shapes, this range was curated by artists for artists and handmade at our brush factory in England, which has been producing fine art brushes by hand since the 1850s.

Uncompromising quality and performance,
now in a synthetic.

winsornewton.com



By Appointment to
HRH The Prince of Wales
Manufacturers of Artists' Materials
Winsor & Newton
London



"A style of paint application characterized by flowing impasto strokes - where the qualities of paint itself are essential to the impact of the picture - the opposite of tight".

Richard Schmid

16 Rosemary & Co BRAVURA Long Flat

The
**NEW
BRAVURA
RANGE**

FOR OILS

WWW.ROSEMARYANDCO.COM - 01535 632666

