



RP



2022



Annual Exhibition 2022

**mall
galleries**



This catalogue is published to accompany the
Society's Annual Exhibition at Mall Galleries,
5 to 14 May 2022

Royal Society of Portrait Painters

17 Carlton House Terrace, London SW1Y 5BD

Tel: 020 7930 6844

www.therp.co.uk

Cover painting

'Her Majesty The Queen' by Benjamin Sullivan RP NEAC

Printed by John Good Limited

Published by the Royal Society of Portrait Painters

© 2022 Royal Society of Portrait Painters

The Royal Society of Portrait Painters
is a Registered Charity No. 327460

Royal Society of Portrait Painters

Patron: Her Majesty The Queen

Advisory Board

Anne Beckwith-Smith LVO
Dame Elizabeth Esteve-Coll DBE
Lord Fellowes GCB GCVO QSO
Anupam Ganguli
Damon de Laszlo
The Hon Sandra de Laszlo
Philip Mould
Sir Christopher Ondaatje CBE OC
Mark Stephens CBE
Daphne J Todd OBE PPRP HRNEAC

President

Richard Foster

Vice President

Antony Williams

Honorary Secretary

Anthony Connolly

Honorary Treasurer

Andrew James

Honorary Archivist

Alastair Adams

Council

Frances Bell
Tim Benson
Jane Bond
Martin Brooks
Miriam Escofet

FBA Trustee

Alastair Adams

Selection Committee

Jane Bond
Anthony Connolly
Miriam Escofet
Richard Foster
Andrew James
Antony Williams
Neale Worley

Prize Judging Panel 2022

Frances Bell
Richard Foster
Matthew Hall
Julian Hartnoll
Sir Hugh Roberts
William Thuillier

Hanging Committee

Simon Davis
Miriam Escofet
Michael Taylor
Neale Worley *Chair*

Exhibitions Coordinator

Emily Cushing

Press and Publicity

Richard Fitzwilliams

Commissions Consultant

Annabel Elton

Deceased Honorary Members

Sir Lawrence Alma-Tadema OM RA RWS
William Bowyer RA RWS NEAC
Maurice Bradshaw OBE
Derek Clarke RSW ARSA
Sir George Clausen RA
Sir Arthur Cope RA
Cowan Dobson RBA
William Dring RA RWS
Hugh de T. Glazebrook
Kenneth Green
Sir James Guthrie PRSA RA
Allan Gwynne-Jones DSO RA
J. McLure Hamilton
Claude Harrison ARCA
Augustus John OM RA
Dame Laura Knight RA RWS
Leonard C. Lindsay FSA
Sir William Llewellyn PRA
Leonard McComb RA Hon RBA
Sir John Everett Millais PRA
A. T. Nowell
Herbert A. Oliver RI
Sir Edward Poynter PRA RWS
Hugh G. Riviere
Carlos Sancha
C. Sanders RA
John S. Sargent RA RWS
Howard Somerville
Trevor Stubley RBA RSW RWS
A. R. Thompson RA
G. F. Watts OM RA
T. Fiddes Watt RSA
J. McNeill Whistler HRSA LL.D
Walter Woodington RBA NEAC

Past Presidents

1891 – 1904 A. Stuart Wortley
1906 – 1910 Sir W. Q. Orchardson RA HRSA
1910 – 1924 Sir James J. Shannon RA
1924 – 1930 Sir William Orpen KBE RA RHA
1932 – 1940 Sir John Lavery RA RSA RHA Etc
1944 – 1948 George Harcourt RA
1948 – 1953 Augustus John OM RA
1953 – 1965 Sir James Gunn RA LL.D
1965 – 1971 Sir William Hutchison PPRSA
1971 – 1980 Edward Halliday CBE PPRBA
1980 – 1983 Norman Hepple RA
1983 – 1991 David Poole PPRP ARCA
1991 Edward Hall
1991 – 1994 George J. D. Bruce
1994 – 2000 Daphne J. Todd OBE
2000 – 2002 Paul Brason
2002 – 2008 Andrew Festing MBE
2008 – 2014 Alastair Adams
2014 – 2017 Robin-Lee Hall

Past Vice Presidents

1898 – 1934 The Hon John Collier OBE
1934 – 1944 George Harcourt RA
1944 – 1952 Sir Oswald Birley RA
1952 – 1953 T. C. Dugdale RA
1953 – 1957 Simon Elwes ARA
1959 – 1964 Sir William Hutchison PPRSA
1966 – 1980 Norman Hepple RA
1980 – 1985 John Ward CBE RA RWS
1985 – 1991 George J. D. Bruce
1991 Edward Hall
1991 – 1994 Richard Foster
1994 – 1999 Trevor Stubley RWS RBA

1999 – 2001 Paul Brason
2001 – 2002 Andrew Festing MBE
2002 – 2008 Susan Ryder NEAC
2008 – 2014 Andrew James
2014 – 2021 Simon Davis

Honorary Members 2022

Tom Phillips CBE RA Hon PS
David Poole PPRP
Tai Shan Schierenberg
John Wonnacott CBE

Members 2022

Alastair Adams PPRP *Hon Archivist*
Frances Bell RP AROI
Tim Benson RP NEAC PROI
Jane Bond RP NEAC
Paul Brason PPRP
Keith Breeden RP
Martin Brooks RP
Peter Brown RP PNEAC PS Hon RBA ROI
George J. D. Bruce PPRP
David Caldwell RP
Tom Coates RP HNEAC Hon PS Hon RBA
David Cobley RP NEAC
Anthony Connolly RP *Hon Secretary*
Saied Dai RP NEAC
Sam Dalby RP
Simon Davis RP RBSA
Miriam Escofet RP
Andrew Festing MBE PPRP
Richard Foster PRP *President*
David Graham RP
Valeriy Gridnev RP PS ROI

James Hague RP
Robin-Lee Hall PPRP
Geoffrey Hayzer RP
Benjamin Hope RP NEAC PS ROI RSMA
Emma Hopkins RP
Sheldon Hutchinson RP
Andrew James RP NEAC *Hon Treasurer*
Peter Kuhfeld RP NEAC
Kathryn Kynoch RP RGI
June Mendoza OBE RP ROI Hon SWA
Anthony Morris RP NEAC
Anastasia Pollard RP
Mark Roscoe RP
Susan Ryder RP NEAC
Melissa Scott-Miller RP NEAC RBA
Stephen Shankland RP
Jeff Stultiens RP
Benjamin Sullivan RP NEAC
Michael Taylor RP
Daphne J Todd OBE PPRP HRNEAC
John Walton RP
Emma Wesley RP
Toby Wiggins RP
Antony Williams VPRP NEAC PS *Vice President*
Neale Worley RP
Robbie Wraith RP
Martin Yeoman RP NEAC

Honorary Trustee 2022

John Walton RP

Honorary Friends

Ms Philippa Abrahams
Ms Anne Allport
Sir Ian Amory
The Rt Hon Lord Archer of Weston Super Mare
Ms Pim Baxter
Baroness Bottomley
Gyles Brandreth Esq
Robin Buchanan-Dunlop Esq
Gerald Carroll Esq
Colonel William Chesshyre
Sir Timothy Clifford
Mrs Peter Cookson
Conrad Dehn Esq
Ms Susan Engledow
Ms Katherine Eustace
Michael Fawcett Esq
Lord Fellowes of West Stafford
Ms Frances Gandy
Dr Rita Gardner
Martin Gayford Esq
David Goldstone Esq
Philip Harley Esq
Sir Max Hastings
Sir Michael Holroyd
David Houchin Esq
Ms Sarah Howgate
Ms Dotti Irving
Mrs Lucy Jenkins

Dr Gillian Jondorf
Baroness Jowell
Sir Henry Keswick
Tim Knox
The Lady Fellowes LVO
Sir Kirby and Lady Laing
Ms Christina Leder
Professor Kenneth McConkey
David Messum Esq
Dr Mark Moody-Stuart
Ms Jans Ondaatje-Rolls
Richard Ormond Esq
William Packer Esq NEAC Hon RBA Hon PS
Ms Liz Rideal
Alasdair Riley Esq
The Hon Maurice Robson
Sir Timothy Sainsbury
Dr Charles Saumarez Smith
Sir David Scholey
The Lord Selborne
Robin Simon Esq
Peyton Skipwith Esq
Peter Spira Esq
Prof. Dame Marilyn Strathern
The Lord Vinson of Roddam Dene LVO DL
Ian Wallace Esq
Anthony Weale Esq
Duncan Wilson Esq
Andrew Wilton Esq

President's foreword

Welcome to the 131st Exhibition of the Royal Society of Portrait Painters. After two very tricky years we are hoping to have a normal exhibition without timed entry and social distancing! There have been a series of false dawns but, with any luck, we really are leaving Covid behind this time!

We are very grateful to the Mall Galleries for their sterling efforts in getting through the pandemic and being able to organise this exhibition. There are many unseen cogs needed to make it all happen.

As always, we are very grateful to the prize givers for their great generosity in giving the prizes which make such a huge difference in encouraging painters from far and wide to take part, and also to encourage people to paint in as many different ways as possible. The internet has extended our reach to America, China, Russia, and many European countries. As with all things, competition and cross-fertilisation raises the standard. Last year's winners can be seen on the next page and we congratulate them all on their well deserved success.

William Lock, Christopher Ondaatje, The de Laszlo Foundation, HRH The Prince of Wales, Burke's Peerage Foundation, and Smallwood Architects, all with slightly different reference points, are fundamental in encouraging the many fine pictures that make the Portrait Painters such an outstanding and interesting show. The RP itself gives two small prizes, one for a specific theme, the other for small pictures which can



'Lock-in Spring 2021' by Richard Foster PRP

easily be overlooked otherwise. The theme this year is self portraits which attempts to make a virtue out of necessity as it was so difficult to have live sittings this year. Next year's theme is 'Clothing'. We very much look forward to seeing who the winners are for all the prizes this year. The prizes come round again next year so get painting everyone!

Girton College continues to display and look after the growing collection of People's Portraits and we are delighted that they

offered to take on the task back in 2000. This year one of their number has written an update on the collection giving more information on how it is developing.

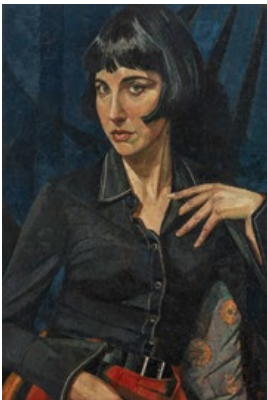
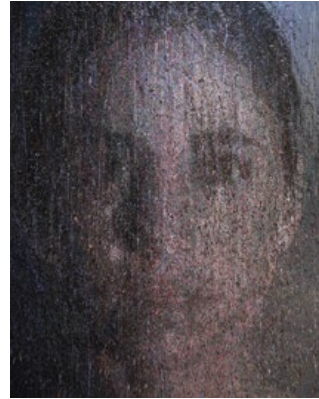
During the exhibition there are always a number of events and demonstrations and you are greatly encouraged to come to some of them. It is best to look for details on the website – www.therp.co.uk

The important thing is to have a good look at the pictures and to enjoy the exhibition. There is nothing like seeing the pictures in the flesh and being able to compare techniques, colours, paint surface, size, and all the things which make the pictures so different and individual. There are some excellent ones of all sorts and sizes, something for everyone. It is always impressive to see how much time and effort has gone into them all. The sitters have to put a lot into it too, and without them there would be no pictures at all!

Anyway 'Enjoy', put the word about, encourage your friends, hopefully come more than once, and maybe commission a picture!

Richard Foster
President

Award Winners 2021



Top (left to right): **'Jack Hudleston'** by Rupert Alexander (Burke's Peerage Foundation Award); **'Self Portrait'** by Frances Bell RP (The William Lock Portrait Prize); **'Silente I'** by Marco Bizzarri (The de Laszlo Foundation Award); **'Self Portrait in Hat'** by Will Calver (The RP Prize for the Best Small Portrait).

Middle (left to right): **'Portrait of the Artist's Wife'** by Saied Dai RP NEAC (The Ondaatje Prize for Portraiture); **'Alethea'** by Phoebe Dickinson (The RP Award); **'Portrait Through a Prism'** by Sandra Kuck (Smallwood Architects Prize).

Bottom: **'Self Portrait at the Age of 28'** by Mantas Poderys (The Prince of Wales's Award for Portrait Drawing).



The People's Portraits Collection at Girton College

Butchers, bakers, dancers, singers, doctors, farmers, mechanics, sailors... the People's Portraits Exhibition at Girton College, Cambridge celebrates people from all walks of life in the UK.

The collection is rich in the diversity of its subjects and styles. The artists are all members of the Royal Society of Portrait Painters, but a criterion of inclusion is that the portraits are not commissioned. Since the artist has made a personal choice of subject, the resulting portraits offer a unique twist on more formal, commissioned works.

The exhibition was originally conceived by the Royal Society of Portrait Painters as a snapshot of millennial Britain in 2000. It moved to Girton College in 2002 with the idea that it would continue to grow and thereby reflect the changing face of the nation as we moved into and through the 21st century. Every year a new painting by a member of the RP is added to the collection. From the 31 paintings which came to Girton 20 years ago from the original exhibition, the number has now increased to 58. Girton College works in partnership with the RP to maintain, develop and promote the exhibition's use.

Girton College is one of Cambridge University's many colleges and it has always taken a particularly pioneering role in its commitment to equality of opportunity and diversity. The College's students and staff

come from many backgrounds and ethnicities and so the nature of this exhibition could not chime better with the spirit of Girton College in its range and reach. Not only a source of enjoyment for Girton's own community of students and staff, the exhibition is also open to the public and has become one of the must-see collections in the Cambridge area. It is a favourite venue for many schools, local organisations and individuals – a place that visitors of all ages come back to again and again, bringing friends and relations.

The collection was always intended to form part of everyone's daily encounters rather than be housed as a separate attraction. It has recently been re-hung and is now located entirely on the ground floor, offering maximum accessibility. Every painting is accompanied by its own story – of how it came to be painted, words from the artist and sometimes from the sitter too. The re-hang seized the opportunity afforded by the recent development of Girton's social hub, rolling out along the corridors and into the social spaces. It opens the College up to the community, whilst at the same time acting as an invaluable out-of-London showcase for the work of the Royal Society of Portrait Painters.

People's Portraits: Open to the public every day 9 – 5. In advance of a visit, we advise that you check the website or phone, just in case we have had to re-introduce any Covid restrictions.



GIRTON COLLEGE
CAMBRIDGE

Girton College, Huntingdon Road,
Cambridge CB3 0JG
Telephone: 01223 338999
Email: peoplesportraits@girton.cam.ac.uk
Web: www.girton.cam.ac.uk/peoples-portraits



The portraits shown here are a mixture of recent and original acquisitions for the exhibition. Top (left to right): **Louisa** by Frances Bell was presented in 2021; **The Boxer, portrait of Anthony** by David Caldwell in 2019; **Fran Maranzi, motorbike dispatch controller** by Jane Bond in 2000 and **The Lifeboatmen of Fowey** by Jeff Stultiens in 2000. In the summer and autumn of 2022 two new portraits are promised to the collection – by Peter Brown and Alastair Adams.



‘To suddenly see yourself as someone else sees you’ – the gift of commissioning a portrait

A portrait commission is a wonderful experience; not only is taking part in a portrait fascinating but also it results in an enduring work of art.

Our expert Commissions Consultant, Annabel Elton, excels at enabling people to find the right artist for their commission and then advising and supporting them throughout the process, making it easy and enjoyable. Here are the stories behind some of the commissioned works which feature in this year’s show.

Annabel Elton
Commissions Consultant

If you would like to explore the idea of commissioning a portrait, contact Annabel Elton

annabelelton@mallgalleries.com

020 7968 0963

www.therp.co.uk



Alison Jaques
by Saied Dai

Upon meeting Saied Dai, Alison felt a wonderful balance between her own thoughts and his artistic input. She relished the sittings and recalls that, ‘it was fascinating to watch someone painting you - the suspense is wonderful.’ Therefore, the unveiling of the finished work was an emotional moment. ‘We were of course thrilled beyond words, but also conscious that it was a special moment’, says Alison; ‘To suddenly see yourself as someone else sees you is the gift of commissioning a portrait.’



The Sproule Family by Neale Worley

At their initial meeting with Neale, the Sproule family discussed composition and content. One topic for discussion was the outfits that James and his wife, Lucy, would wear. Neale suggested that James might look at options other than his favourite tweed, he also decided to omit the pattern on Lucy's dress. The family wondered about the wisdom of this: until they saw the result. 'Indeed, he was right', says James, 'that pattern would catch one's eye too much and detract from the portrait's overall effect.'



Octavia Minoprio by Anthony Connolly

The Minoprios have visited the Royal Society of Portrait Painters over many years because they are commissioning a series of portraits of their grandchildren. Whereas their grandson had been drawn, they felt that granddaughter Octavia's red hair called for colour so they commissioned a painting. After careful research, they chose the artist Anthony Connolly. They knew that he was the right choice when they saw how good he was at putting children at ease. Octavia was very relaxed with him at sittings and enjoyed his company.



Rodney Williams by Michael Taylor

When Diana was looking for an artist to paint her husband, Rodney, for his birthday, she wanted someone who would 'produce a work of art, not just a portrait'. On seeing Michael Taylor's paintings, she was convinced he was the perfect artist to produce such a piece. Happily, the commission was placed, with Rodney allowing Michael free reign over the many entertaining sittings until the portrait was complete. The result was the wonderful work of art that Diana wanted. 'The portrait is amazing', she says, 'we feel very lucky.'

The Royal Society of Portrait Painters annual exhibition in honour of The Queen's Platinum Jubilee

Our Patron HM The Queen has reigned for over half of the time the Royal Society of Portrait Painters has existed. As one of the most painted figures in history, her epoch has been intertwined with portraiture, and as such, intimately connected with members of the Royal Society of Portrait Painters.

To mark The Queen's Platinum Jubilee the Royal Society of Portrait Painters is honoured to show a curated selection of portraits of our monarch by past and present member artists, alongside our Annual Exhibition.

Throughout her seven decades of service the Queen has sat innumerable times, each painting a unique vista into a remarkable life and person. The selected paintings exhibited at the Royal Society of Portrait Painters Annual Exhibition 2022 represent her reign to the present day, demonstrating a wide array of artistic styles, sizes, mediums and methods.

Each artist who receives such an illustrious commission confronts diverse challenges in painting the monarch. Primarily, they are presented with a figure of state, embodied in tradition – an emblematic position that

transcends the everyday to take a place in history. Conversely, and most salient to a portraitist, each painting looks for the intimate expression of a human being.

A wide range of national institutions have provided steady patronage to our Society's members, allowing them to embark on career defining commissions. A commission of the Queen offers a thrilling chance to contribute to the long chain of Royal paintings that thread through our culture.

We are very grateful to those institutions whose commitment to painted portraits have provided such opportunity to artists and to these institutions in particular for lending their paintings of HM Queen for this exhibition.

With special thanks to –

National Portrait Gallery

The Royal Hospital

The Royal Green Jackets

The Foreign and Commonwealth Office

The Royal Automobile Club

The Federation of British Artists

1960s

Pietro Annigoni (1910–88)

Lent by the National
Portrait Gallery

Queen Elizabeth II

216 x 197 cm (85 x 78 ins)

Tempera grassa on
paper panel



1980s



June Mendoza OBE RP ROI
The Royal Greenjackets – Winchester Barracks

Her Majesty Queen Elizabeth II

89 x 74 cm (35 x 29 ins)
Oil on canvas

1990s

OPPOSITE (left to right)

Susan Ryder RP NEAC
The Royal Automobile Club

Her Majesty The Queen

154 x 102 cm (61 x 40 ins)
Oil on canvas

Andrew Festing MBE PPRP
Royal Hospital, Chelsea

Her Majesty The Queen

238 x 144 cm (94 x 57 ins)
Oil on canvas



1990s



Antony Williams RP NEAC PS
Private Collection

HM The Queen

122 x 96 cm (48 x 38 ins)
Egg tempera

2000s



Robbie Wraith RP
Collection of the artist

Study for Her Majesty the Queen for
the Portrait commissioned for Shell

26 x 20 cm (10 x 8 ins)
Oil on panel

2010s



Benjamin Sullivan RP NEAC
Collection of the artist

Her Majesty The Queen

60 x 46 cm (24 x 18 ins)
Oil on canvas

2020s



Miriam Escofet RP
Foreign, Commonwealth & Development Office

Portrait of HM Queen Elizabeth II

140 x 100 cm (56 x 40 ins)
Oil on linen over panel

The William Lock Portrait Prize

in association with

The Royal Society of Portrait Painters

The President, Council, and Members are most grateful to William Lock for extremely generously sponsoring this prize for ‘the most timeless portrait with a real feeling for paint and its aesthetic potential’.

The rather long description is intended to remind us that some of the best pictures ever painted are portraits, and that portrait painting is more than mere representation.

We look forward to encouraging excellent portraits and many outstanding prize winners.

The prize is for £20,000.

Previous Prize Winner

2021 Frances Bell RP

The de Laszlo Foundation Award

The Society wishes to acknowledge the considerable interest shown by The de Laszlo Foundation in encouraging young artists and furthering the aims of The Royal Society of Portrait Painters.

We are pleased to announce that The de Laszlo Medal for Excellence, together with a cheque for £3,000, will be awarded to the artist aged thirty five or under, judged to have submitted the best portrait.

The President, Council and members wish to express their gratitude to The de Laszlo Foundation for instigating this award.

Previous Prize Winners

(Awarded by The Carroll Foundation until 2003)

1990 David Quirke **1992** Nahem Shoa **1993** Richard Smith
1994 Haydn Cottam **1995** Antony Williams **1996** Frances Turner **1997** Francis Terry
1998 Andrew James **1999** James Lloyd **2000** T. M. J. Leveritt **2001** James Schneider
2002 Benjamin Sullivan **2003** Francisco Centofanti **2004** Brendan Kelly **2005** Emma Wesley
2006 Frances Bell **2007** Patrick Bremer **2008** Ruth Murray **2009** Emma Wesley
2010 Norman Long **2011** Martha Zmpounou **2012** David Sargerson **2013** Kelvin Okafor
2014 Flora Watson **2015** Lorna May Wadsworth **2016** Stephanie Kullberg **2017** Jamie Routley
2018 Emma Hopkins RP **2019** Joshua Waterhouse **2020** Nneka Uzoigwe **2021** Marco Bizzarri



CLARENCE HOUSE

The Prince of Wales's Award for Portrait Drawing

The extraordinary circumstances of the last two years have made us aware, as never before, of the importance of human connection to our lives.

That connection is what is represented, in a unique way, in portraiture, so I could not be more pleased that the Royal Society of Portrait Painters is once more celebrating this most evocative artform with the annual exhibition and competition.

I know that the members of the Society have worked hard to ensure that, despite all challenges, artists young and old are given the opportunity to enter this year's competition and, in so doing, continue the tradition which makes me so proud to lend my name to the Award.

I am very much looking forward to seeing all of your entries and, as ever, I wish you all every possible success.



The President, Council and members are deeply grateful to
H.R.H. The Prince of Wales for The Prince of Wales's Award for Portrait
Drawing, a framed certificate and a cheque for £2,000, which is made annually.

Previous Prize Winners

1999 Nicholas Cochrane **2000** Tom Coates **2001** Sheldon Hutchinson **2002** Peter Kuhfeld
2003 Warren Baldwin **2004** Anthony Connolly **2005** Toby Wiggins **2006** Thomas Lumley **2007** Saied Dai
2008 Peter Brown **2009** Neil B. Helyard **2010** Louise Yates **2011** David Miller **2012** Anthony Connolly
2013 Toby Wiggins **2014** Antony Williams **2015** Jason Bowyer **2016** Graeme Wilcox
2017 Bernadett Timko **2018** Anna Pinkster **2019** Robbie Wraith RP **2020** Jack Freeman **2021** Mantas Poderys

SMALLWOOD ARCHITECTS

The Smallwood Architects Prize for Contextual Portraiture

The Smallwood Architects Prize is an award for a portrait in which architectural or interior features play an important part.

We are looking for the setting to enhance the human subject, creating energy and a sense of place, and perhaps giving an insight into the subject's life.

At Smallwood Architects, we are passionate about creating beautiful living environments for our clients and are highly professional in every aspect of our work.

I look forward to presenting the winner with their prize of £1,000.



Jonathan Dinnewell MBA RIBA
Smallwood Architects Ltd

Previous Prize Winners

2015 Tom Hughes **2016** Lyn Gray **2017** David Cobley RP NEAC **2018** Michael Taylor RP
2019 David Caldwell RP **2020** Steven Wood **2021** Sandra Kuck



RP Royal Society of
Portrait Painters

The RP Award

The Royal Society of Portrait Painters
is pleased to continue their £2,000 prize for portraiture,
The RP Award, for which all works shown in the
Annual Exhibition are eligible. The award will be made
to the artist whose work best represents the year's
chosen theme – which for 2022 is 'Self-Portrait'. The
judges will be looking for the most interesting and
engaging interpretation of the idea of 'Self-Portrait'
within the parameters of portraiture.

Previous Prize Winners

2018 Saied Dai RP NEAC **2019** James Hague RP
2020 Stephen Leho **2021** Phoebe Dickinson



RP Royal Society of
Portrait Painters

The RP Prize for the Best Small Portrait

The Royal Society of Portrait Painters
is pleased to offer a prize of £2,000
to the best small portrait in the Society's
Annual Exhibition, measuring not more than
38 x 30.5 cm (15 x 12 inches) unframed.

Previous Prize Winners

2020 Robbie Wraith RP **2021** Will Calver



BURKE'S PEERAGE FOUNDATION

Burke's Peerage Foundation Award for Classically Inspired Portraiture

in association with

The Royal Society of Portrait Painters

Burke's Peerage Foundation Award, established by its founders
William Bortrick and Mark Ayre in 2015, is presented for
Classically Inspired Portraiture in the RP Annual Exhibition.

It is presented each year with a certificate and a prize for £2,000.

William Bortrick
Founder and Chairman
Burke's Peerage Foundation

Mark Ayre
Founder and Vice Chairman
Burke's Peerage Foundation

Previous Prize Winners

2015 Miriam Escofet **2016** Richard Foster RP **2017** Andrew Festing MBE PPRP
2018 Paul Brason PPRP **2019** Phoebe Dickinson **2020** Joshua Waterhouse **2021** Rupert Alexander

The Ondaatje Prize for Portraiture

in association with

The Royal Society of Portrait Painters

The President, Council and members are most grateful to
Sir Christopher Ondaatje CBE OC, and the Ondaatje Foundation for their
generous sponsorship of this major annual award to the painter
of the most distinguished portrait of the year.

The prize was launched in 1995 and took the form of a commission to
paint our Patron H.M. The Queen, for the Society. From 1996, the Prize has
taken the form of a cheque in addition to the Society's Medal.

This year, 2022, sees the prize money at £10,000.

Previous Prize Winners

1995 Antony Williams **1996** Desmond Healy

1997 Thom Winterburn **1998** Paul Brason **1999** John Ward CBE

2000 Leonard Rosoman OBE RA **2001** Daphne J. Todd OBE **2002** Martin Yeoman

2003 Michael Reynolds **2004** Howard J. Morgan **2005** John Wonnacott CBE

2006 Saied Dai **2007** Tom Coates **2008** James Lloyd **2009** Anastasia Pollard

2010 Robin-Lee Hall **2011** Tai Shan Schierenberg **2012** Antony Williams **2013** Mark Roscoe

2014 Jennifer McRae **2015** Brian Morris **2016** Lantian D. **2017** Shawn McGovern

2018 James Hague **2019** Peter Kuhfeld RP NEAC **2020** Shuang Liu **2021** Saied Dai RP NEAC

Artists' General Benevolent Institution

Patron: H.R.H The Prince of Wales

Founded in 1814 by JMW Turner, the Artists' General Benevolent Institution provides help to professional artists and their dependants in times of difficulty.

Funds are always needed, and donations of any amount are gratefully received and acknowledged.

Please send your donation to:

The Secretary

Artists' General Benevolent Institution
Burlington House, Piccadilly
London W1J 0BB

Registered Charity No. 212667

Royal Society of Portrait Painters

You may consider making a bequest to the Royal Society of Portrait Painters, which specifically promotes contemporary portraiture and receives no public funding.

If you would like further information, please write to:

Anthony Connolly RP

Hon Secretary
Royal Society of Portrait Painters
17 Carlton House Terrace
London SW1Y 5BD

Telephone 020 7930 6844

Registered Charity No. 327460



Annual Exhibition 2022

Alastair Adams PPRP



Sir Steve Smith, Vice-Chancellor,
University of Exeter 2002–2020

153 x 102 cm (60 x 40 ins)

Oil



Professor Sir David Eastwood, Vice-Chancellor,
University of Birmingham 2009–2021

106 x 79 cm (41 x 31 ins)
Oil



Professor Dame Sally Davies, Master of Trinity College,
Cambridge 2019–

102 x 79 cm (40 x 31 ins)
Oil

Frances Bell RP AROI



Andrew Festing

75 x 65 cm (30 x 26 ins)
Oil



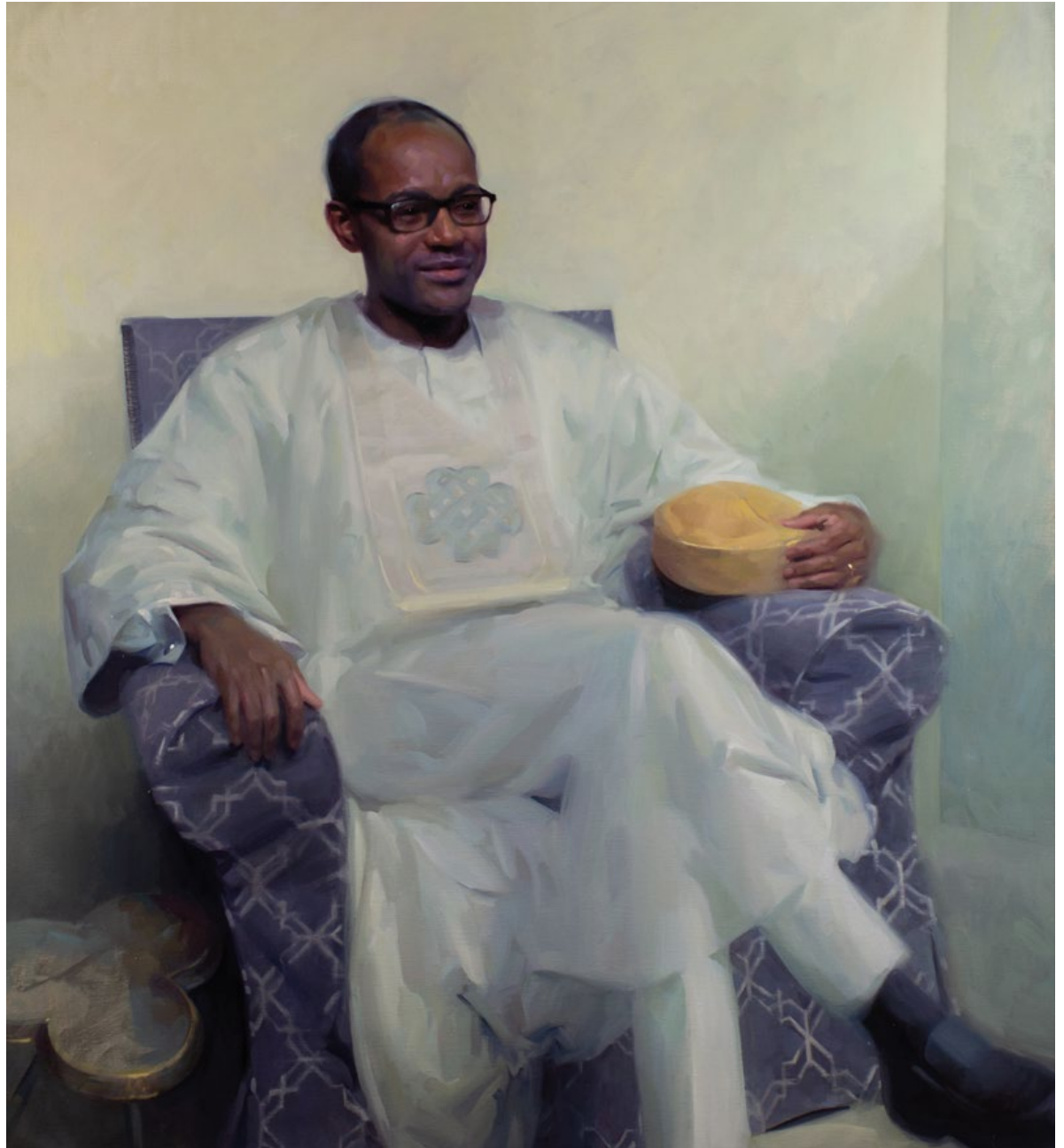
Gillian

91 x 71 cm (36 x 28 ins)
Oil

Femi

120 x 110 cm (47 x 43 ins)

Oil



Tim Benson RP NEAC PROI



Nick Frost

157 x 61 cm (62 x 24 ins)

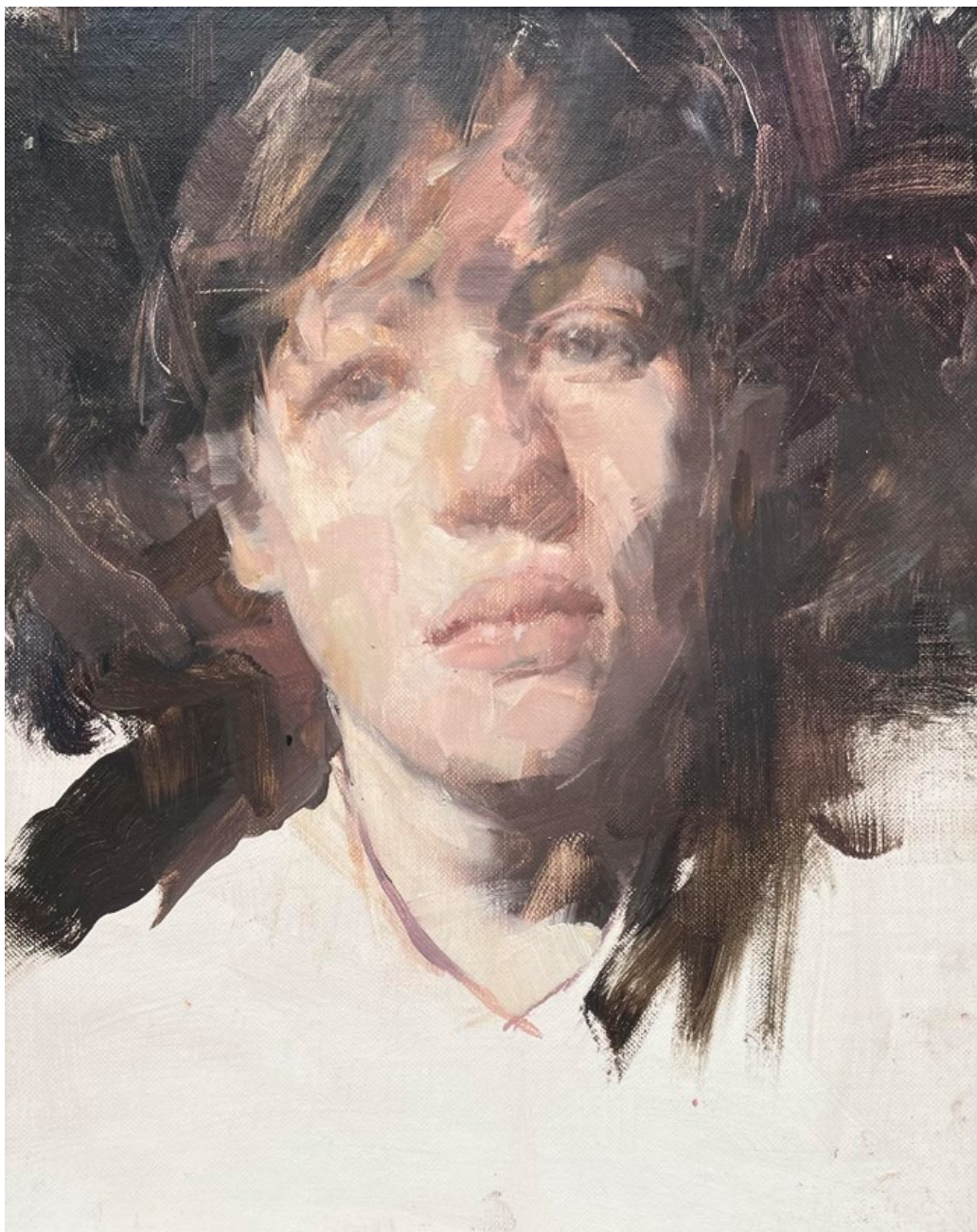
Oil

Martin Brooks RP

Portrait of a Boy

30 x 24 cm (12 x 9 ins)

Oil



Peter Brown RP PNEAC PS RBA ROI



Ned at 13

31 x 25 cm (12 x 10 ins)

Oil

Ella in the Kitchen with Sweet Peas

41 x 31 cm (16 x 12 ins)

Oil



David Caldwell RP



Adam Younis (with Cactus)

150 x 100 cm (59 x 39 ins)

Oil

The portrait is of my friend Adam Younis, a Swiss-Iraqi Glaswegian. I asked him to wear the yellow jacket because I could pick him out in a crowd wearing that jacket like a beacon, so I associated him with it. The portrait was done in my studio and I asked him to bring in a few things from home to 'personalise' the space. The photo on the wall is a screen still of actors William Shatner and Peter Falk, two of Adam's heroes (I believe he has met the former). And the cactus was what he brought for company. You could psychoanalyse that, I just painted it.

Self Portrait

32 x 25 cm (13 x 10 ins)

Oil



Tom Coates RP HNEAC Hon PS Hon RBA



My Grandson Matthew,
Reading in the Studio

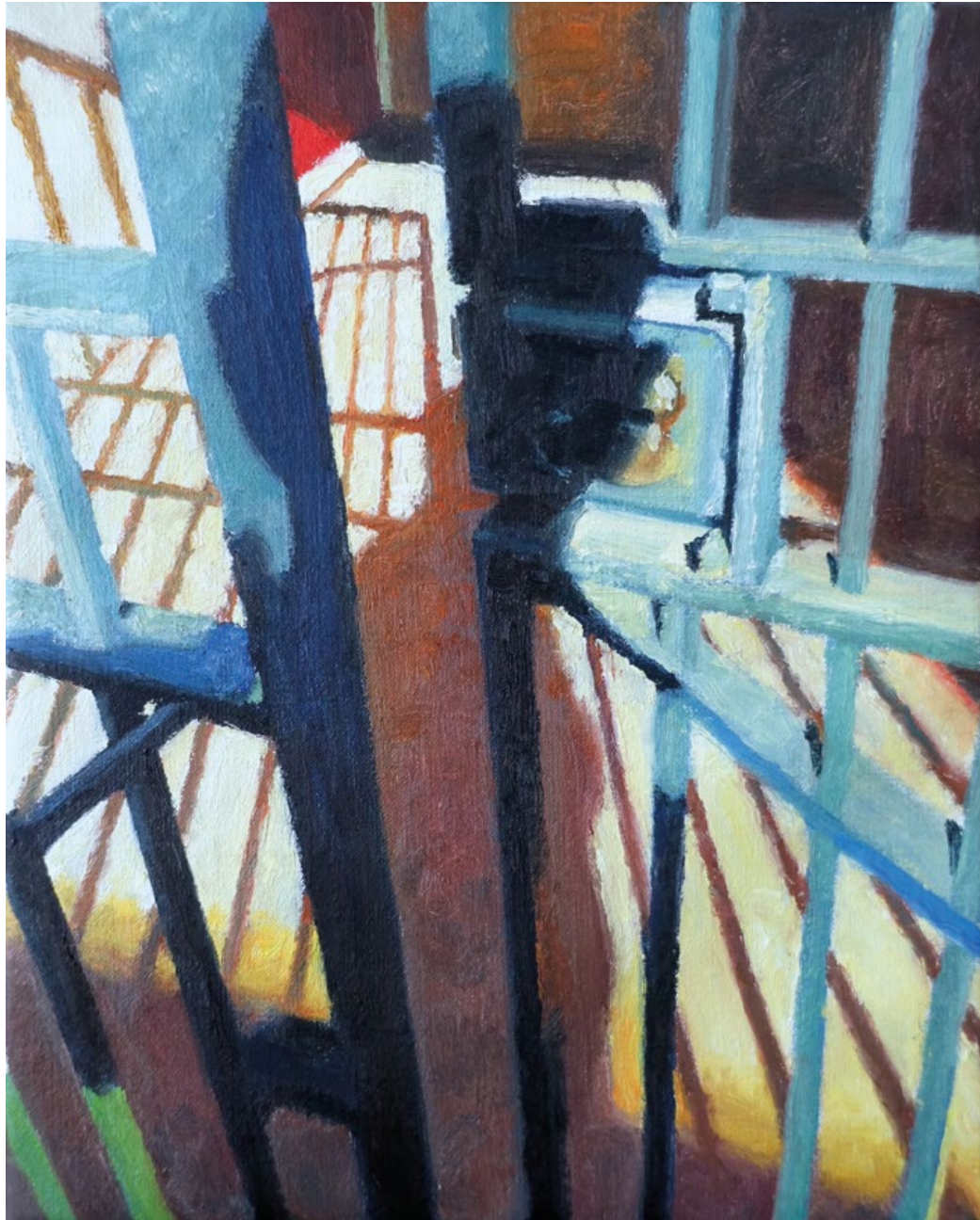
51 x 61 cm (20 x 24 ins)
Oil

Telling a Yarn,
The Cornish Fisherman

91 x 61 cm (36 x 24 ins)
Oil



David Cobley RP NEAC



Gateway

26 x 21 cm (10 x 8 ins)

Oil

By the Pool

102 x 107 cm (40 x 42 ins)

Oil



Anthony Connolly RP

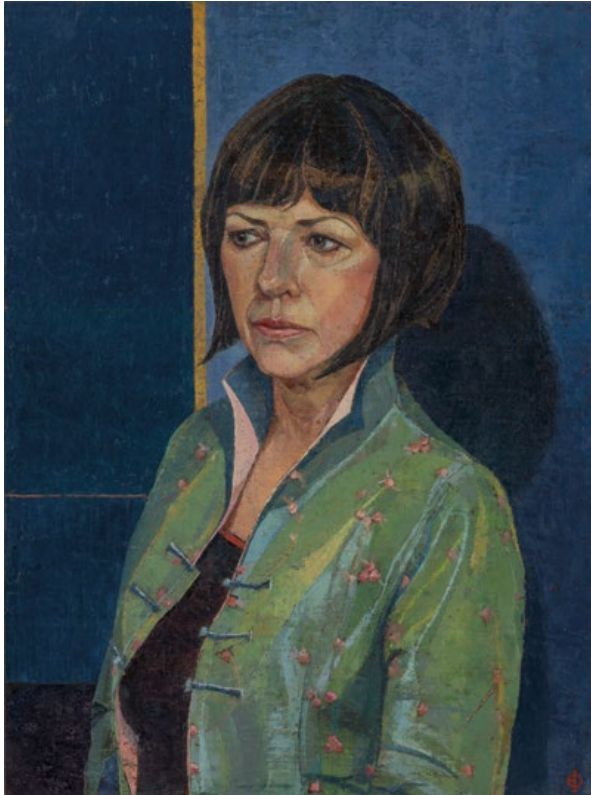


Octavia Minoprio

60 x 50 cm (24 x 20 ins)

Oil

Saied Dai RP NEAC



Alison Jaques

61 x 46 cm (24 x 18 ins)
Oil



Derek Paravicini and Professor Adam Ockelford

122 x 135 cm (48 x 53 ins)
Oil

Simon Davis RP RBSA



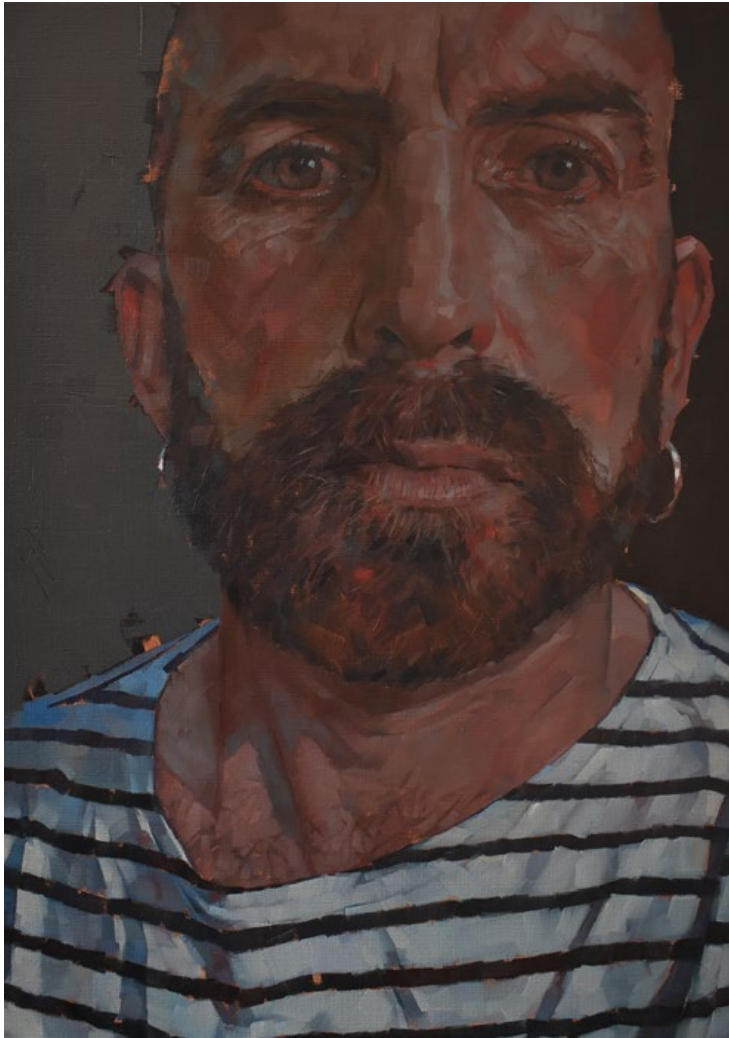
Shapla

102 x 68 cm (40 x 27 ins)
Oil



Zahra

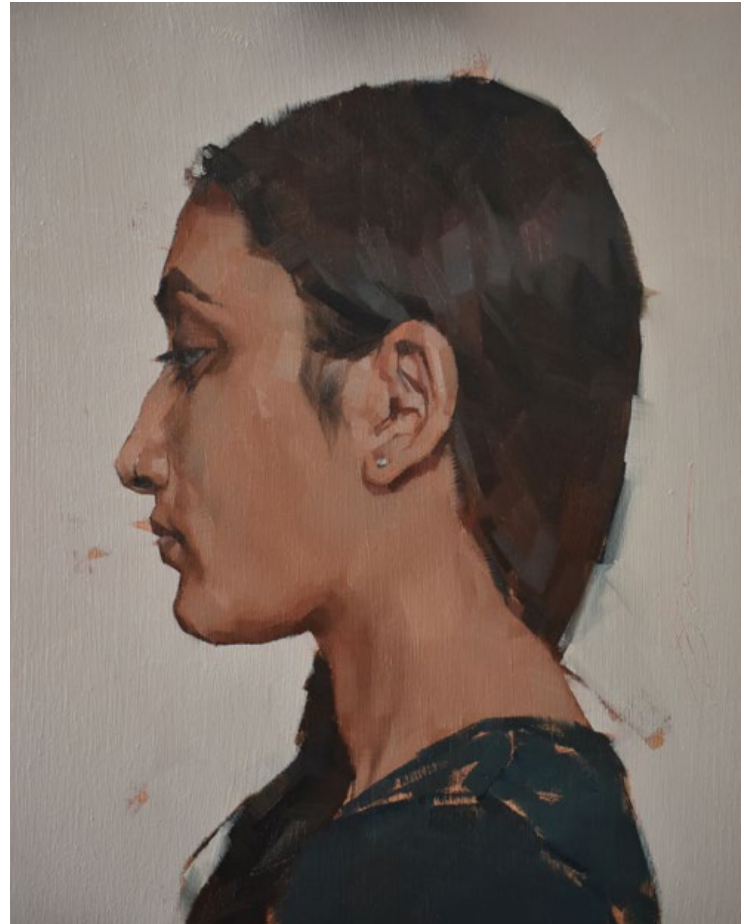
70 x 50 cm (28 x 20 ins)
Oil



Death of the Self

70 x 50 cm (28 x 20 ins)

Oil



Taslima

25 x 20 cm (10 x 8 ins)

Oil

Miriam Escofet RP



Portrait of HM Queen Elizabeth
II for the Foreign Commonwealth
and Development Office

140 x 100 cm (56 x 40 ins)
Oil

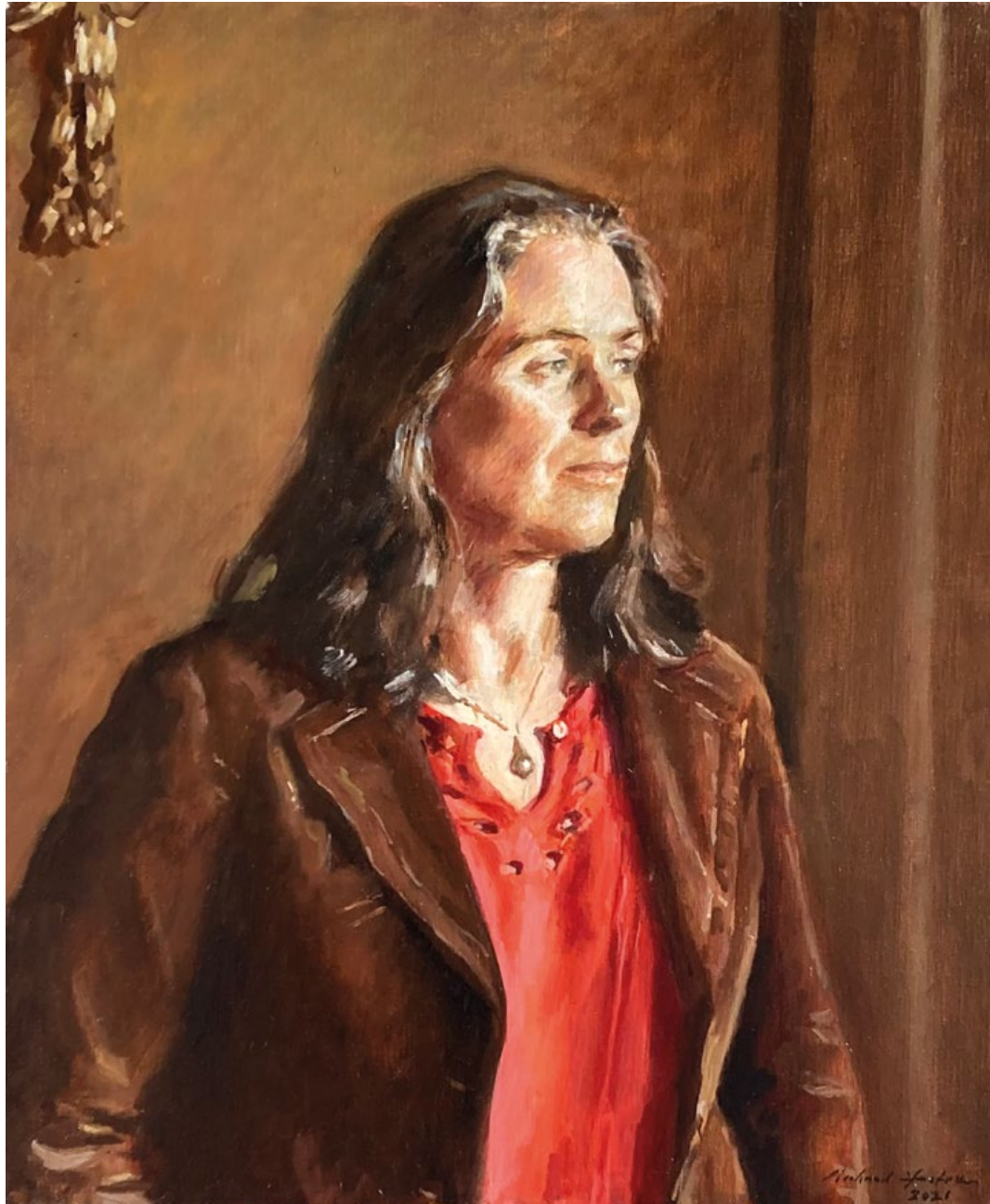
Portrait of Nicolas Priestley

90 x 70 cm (35 x 28 ins)

Oil



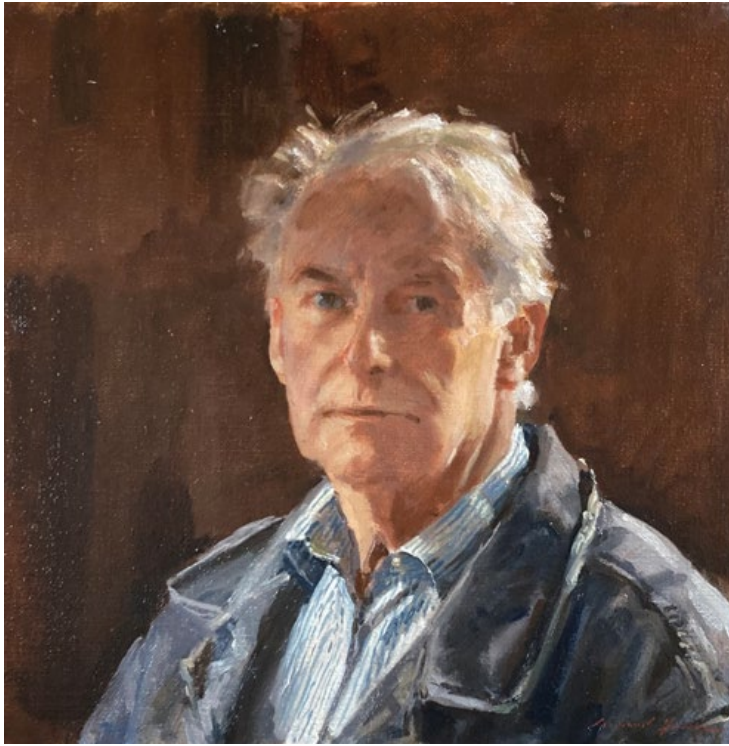
Richard Foster PRP



Mrs Angus Watson of Touch

60 x 50 cm (24 x 20 ins)

Oil



Lock-in Spring 2021

35 x 35 cm (14 x 14 ins)
Oil



The Undergraduate

50 x 40 cm (20 x 16 ins)
Oil

David Graham RP



Miss Luz

69 x 56 cm (27 x 22 ins)
Oil



Miss America

99 x 76 cm (39 x 30 ins)
Oil



Pensive

102 x 91 cm (40 x 36 ins)

Oil

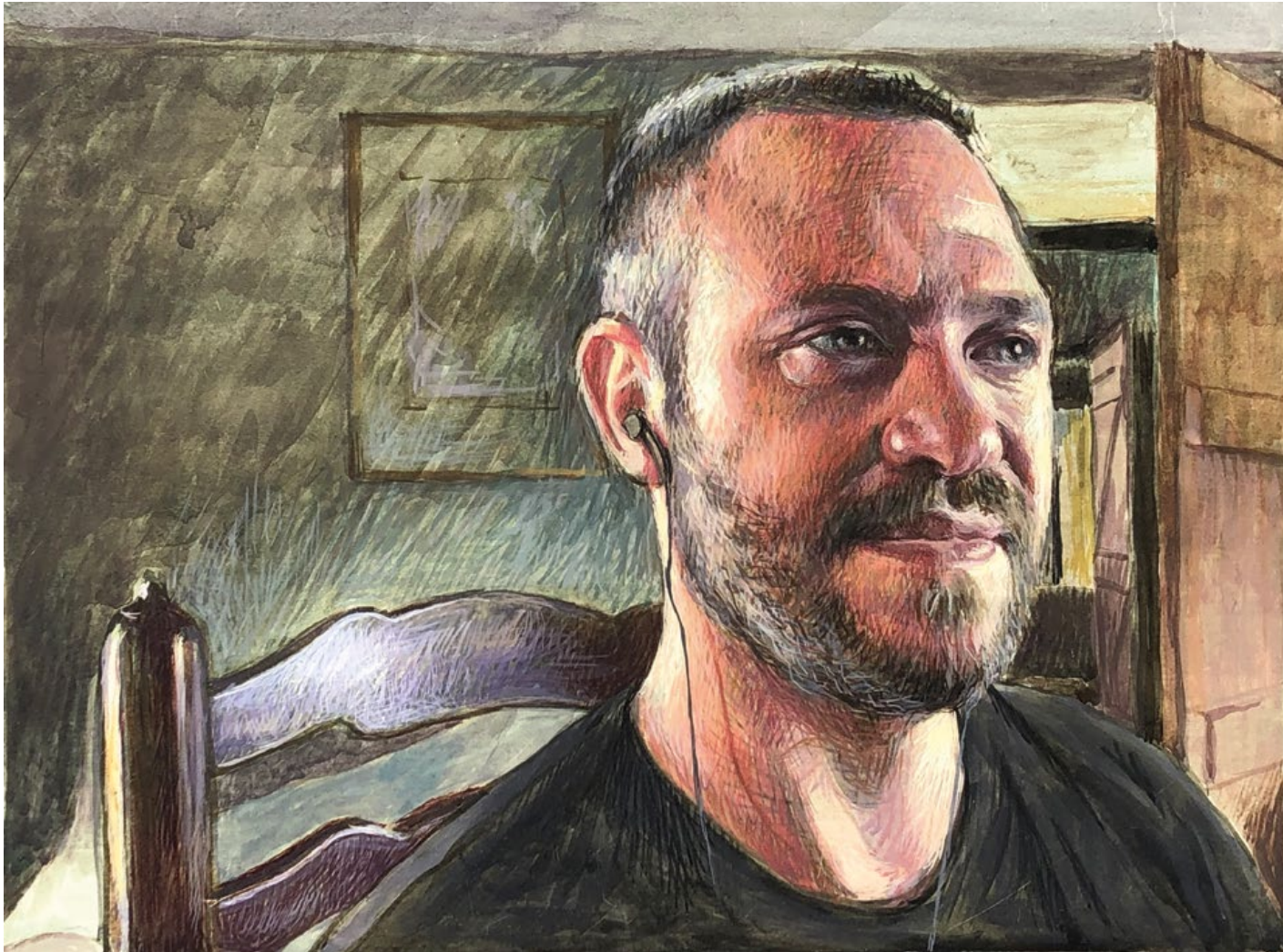


Martha at St Mark's, Venice

102 x 86 cm (40 x 34 ins)

Oil

Robin-Lee Hall PPRP



Will

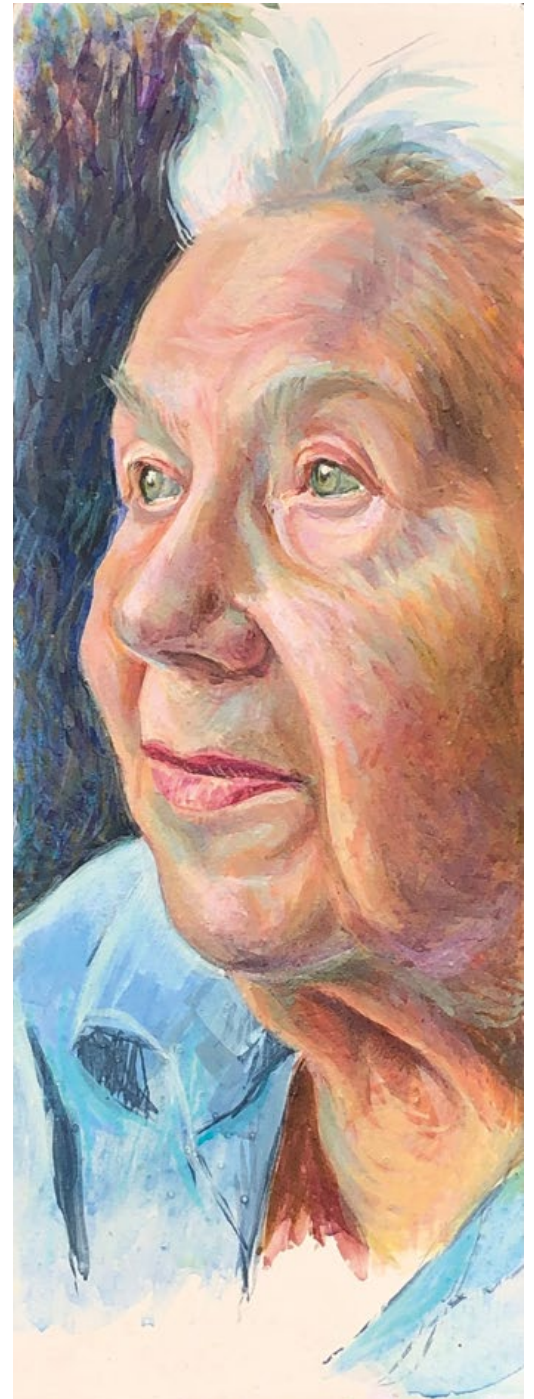
15 x 20 cm (6 x 8 ins)

Egg tempera

Hope

30 x 11 cm (12 x 4 ins)

Egg tempera



Benjamin Hope RP NEAC PS ROI RSMA



Self Portrait 11/02/2022

41 x 31 cm (16 x 12 ins)
Oil



Nicholas

31 x 26 cm (12 x 10 ins)
Oil

Leah

76 x 51 cm (30 x 20 ins)

Oil





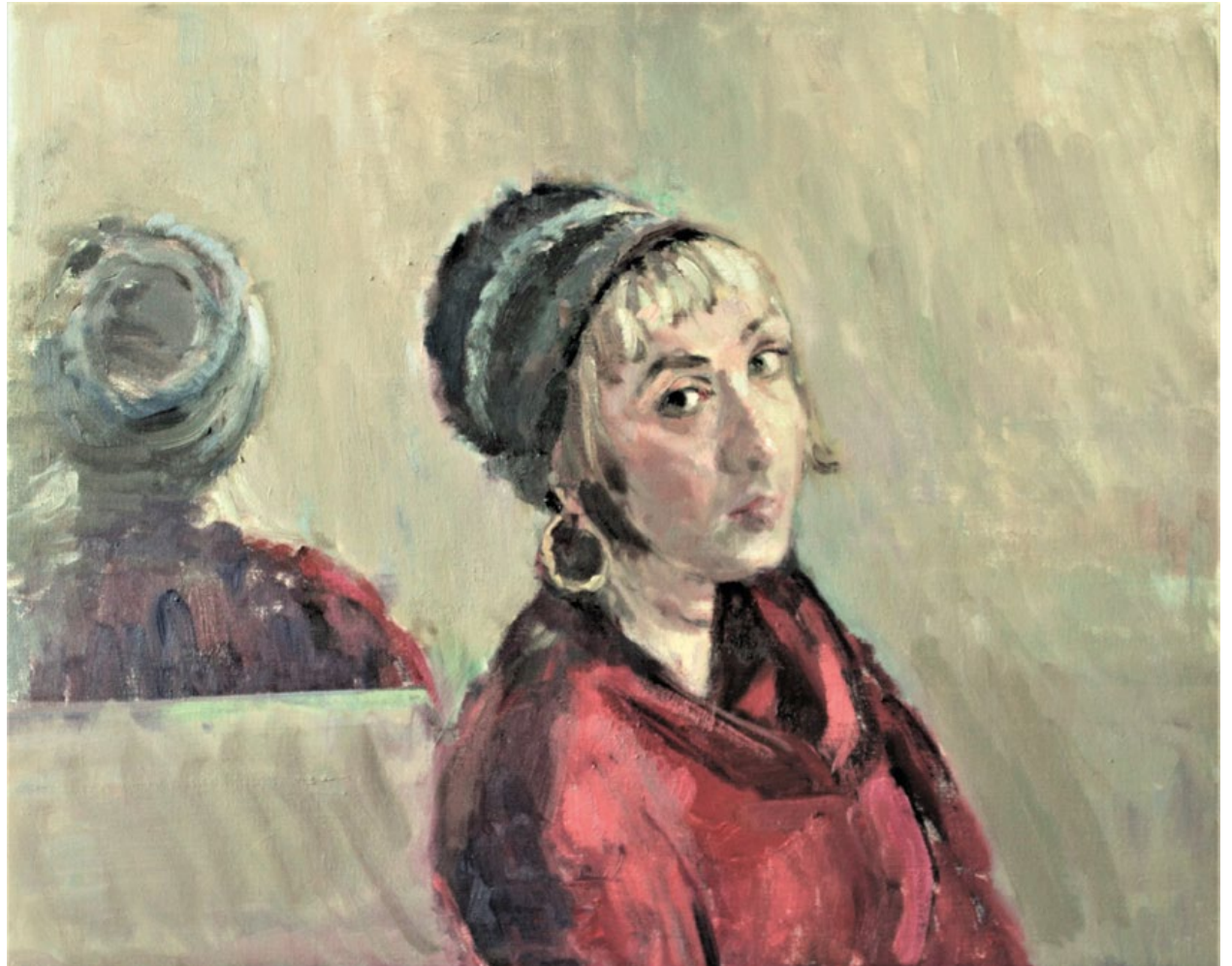
Gordon Gibb – Architect

97 x 71 cm (38 x 28 ins)
Oil



Lucy Allison

91 x 71 cm (36 x 28 ins)
Oil

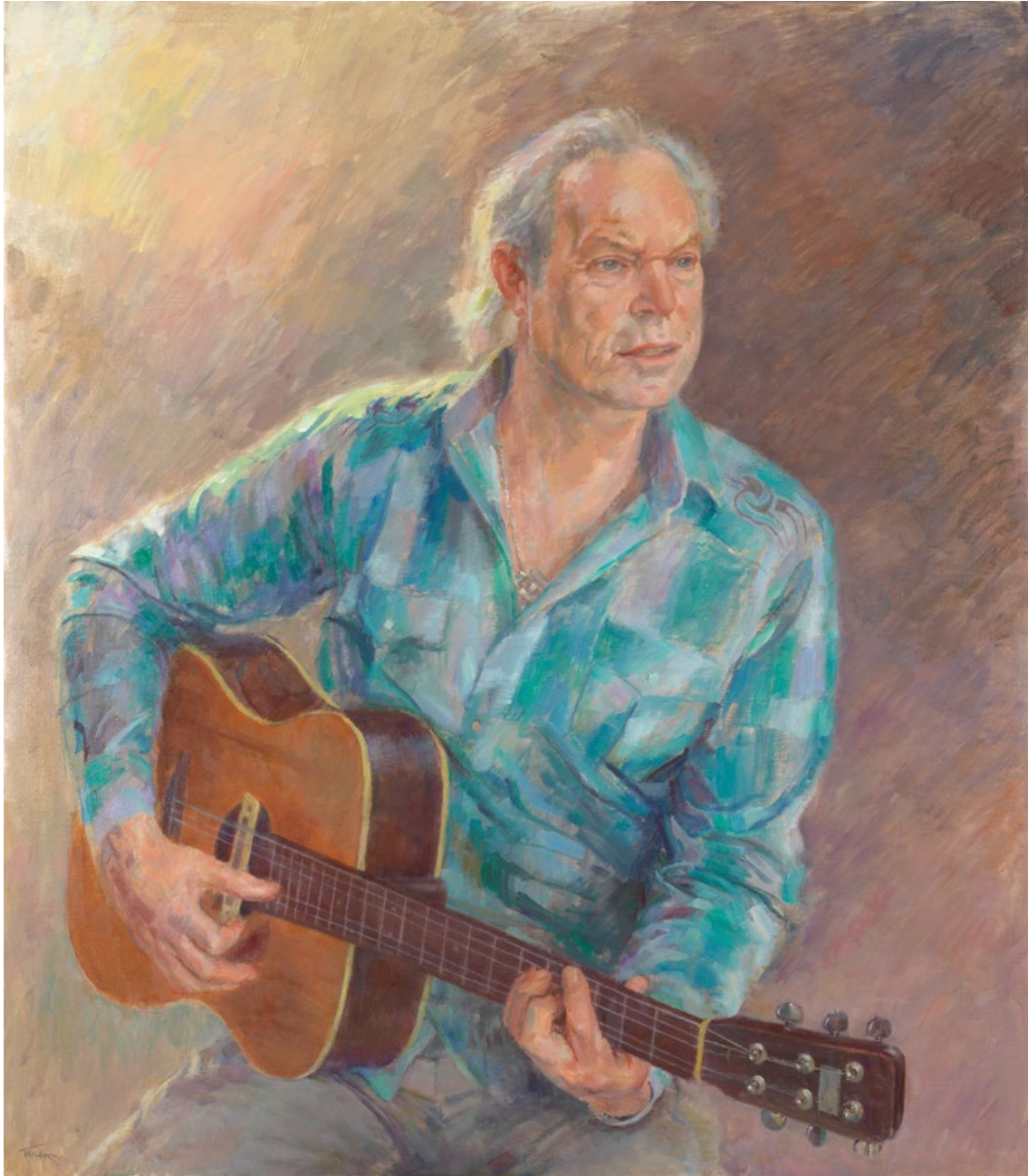


Hannah in Furry Bonnet

61 x 76 cm (24 x 30 ins)

Oil

June Mendoza OBE RP ROI



Chris Jagger

114 x 89 cm (45 x 35 ins)

Oil

Chris and my daughter No 1 have been stalwarts of his band (Glastonbury, etc.) for many years.

For at least five of these, he and I have been muttering about doing a portrait.

Each sitting was a delicious mini concert as Chris whiled away the time gently, singing and playing.

John Rendall

89 x 114 cm (35 x 45 ins)

Oil

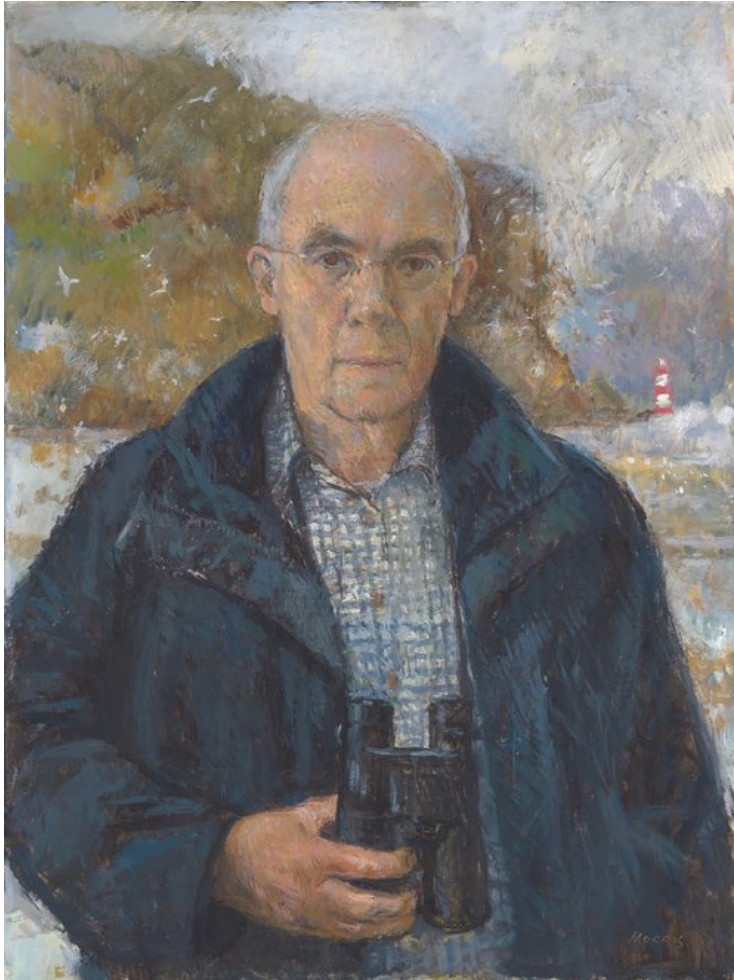
This extraordinary, multifaceted man is the one who went to Harrods and bought a lion cub, brought it up in Chelsea, subsequently rewilded it in Africa, and a year later had that amazing heart-warming reunion many of you will know about.

The lead in the painting is the one with which John took Christian for his walkies in the Kings Road, and by sheer coincidence the decoration on the Masai shield features a lion.

The pose? John just did and I said 'hold it'.



Anthony Morris RP NEAC



The Bird Watcher Self Portrait

61 x 46 cm (24 x 18 ins)
Oil



Mathew, Charlotte and Max

65 x 81 cm (26 x 32 ins)
Oil

Anastasia Pollard RP

Self Portrait

20 x 15 cm (8 x 6 ins)

Oil



Mark Roscoe RP



Cardinal Vincent Nichols

76 x 63 cm (30 x 25 ins)

Oil

Patrick Mitton

76 x 63 cm (30 x 25 ins)

Oil



Susan Ryder RP NEAC HSWA



Dame Angela McClean DBE FRS

91 x 71 cm (36 x 28 ins)
Oil



David Dunn, Head Master of Yarm School, 1999

97 x 76 cm (38 x 30 ins)
Oil



Alexander and Julia with Slipper, Bella and Treacle

86 x 71 cm (34 x 28 ins)

Oil

Melissa Scott-Miller RP NEAC RBA



Self Portrait with Growing Family

60 x 60 cm (24 x 24 ins)
Oil



Four Week Old Grandson!

30 x 25 cm (12 x 10 ins)
Oil

Jeff Stultiens RP



Michael Harding

112 x 92 cm (44 x 36 ins)
Oil

Detail – photographed in progress



Lee Maxted-Page

130 x 150 cm (51 x 59 ins)
Oil

Photographed in progress

Benjamin Sullivan RP NEAC



Her Majesty The Queen

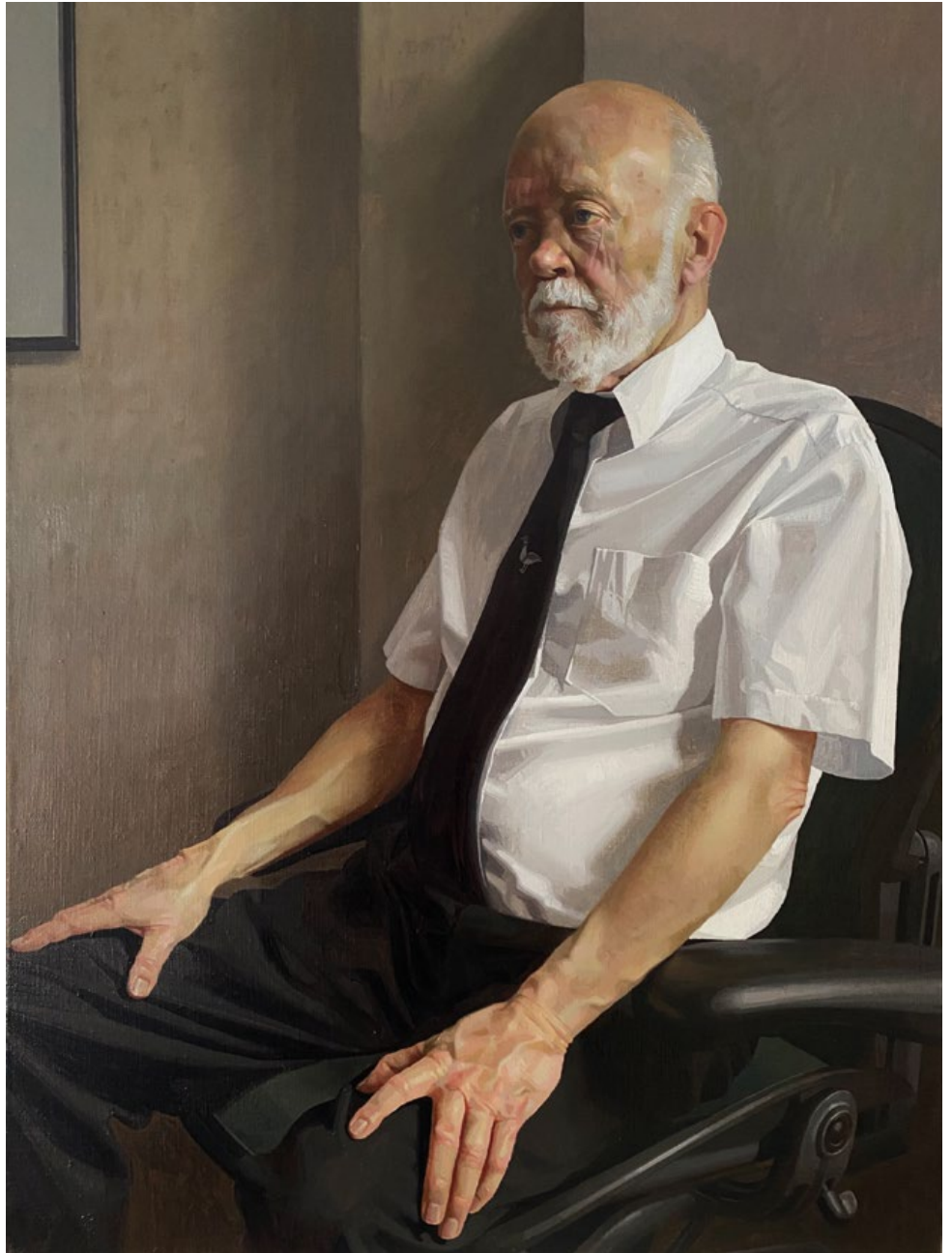
60 x 46 cm (24 x 18 ins)

Oil

Terry McAvoy

60 x 46 cm (24 x 18 ins)

Oil



Michael Taylor RP



Rodney Williams

100 x 75 cm (39 x 30 ins)

Oil

Daphne Todd OBE PPRP HRNEAC

David Rebbitt, Past Head of
Uckfield Community College

61 x 46 cm (24 x 18 ins)

Oil



Emma Wesley RP



Dame Julie Lydon OBE – sketch

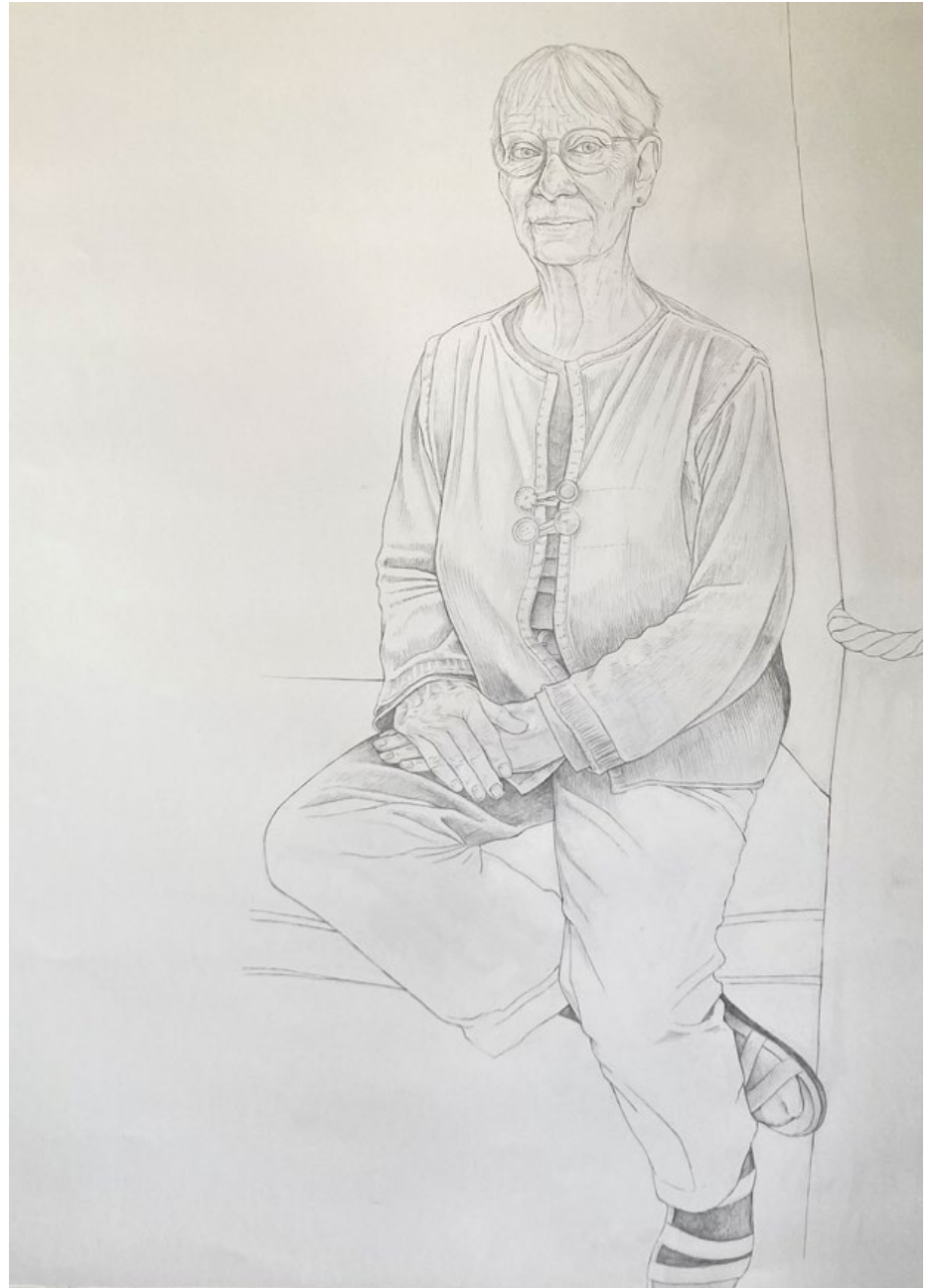
52 x 76 cm (20 x 30 ins)

Pencil

'The Philosopher': Sketch of
Professor Jane Heal

44 x 85 cm (17 x 33 ins)

Pencil



Toby Wiggins RP



Nyika Mutendera

50 x 40 cm (20 x 16 ins)

Oil

Margo Kinsey (1921–2018)

40 x 30 cm (16 x 12 ins)

Oil



Antony Williams VPRP NEAC PS



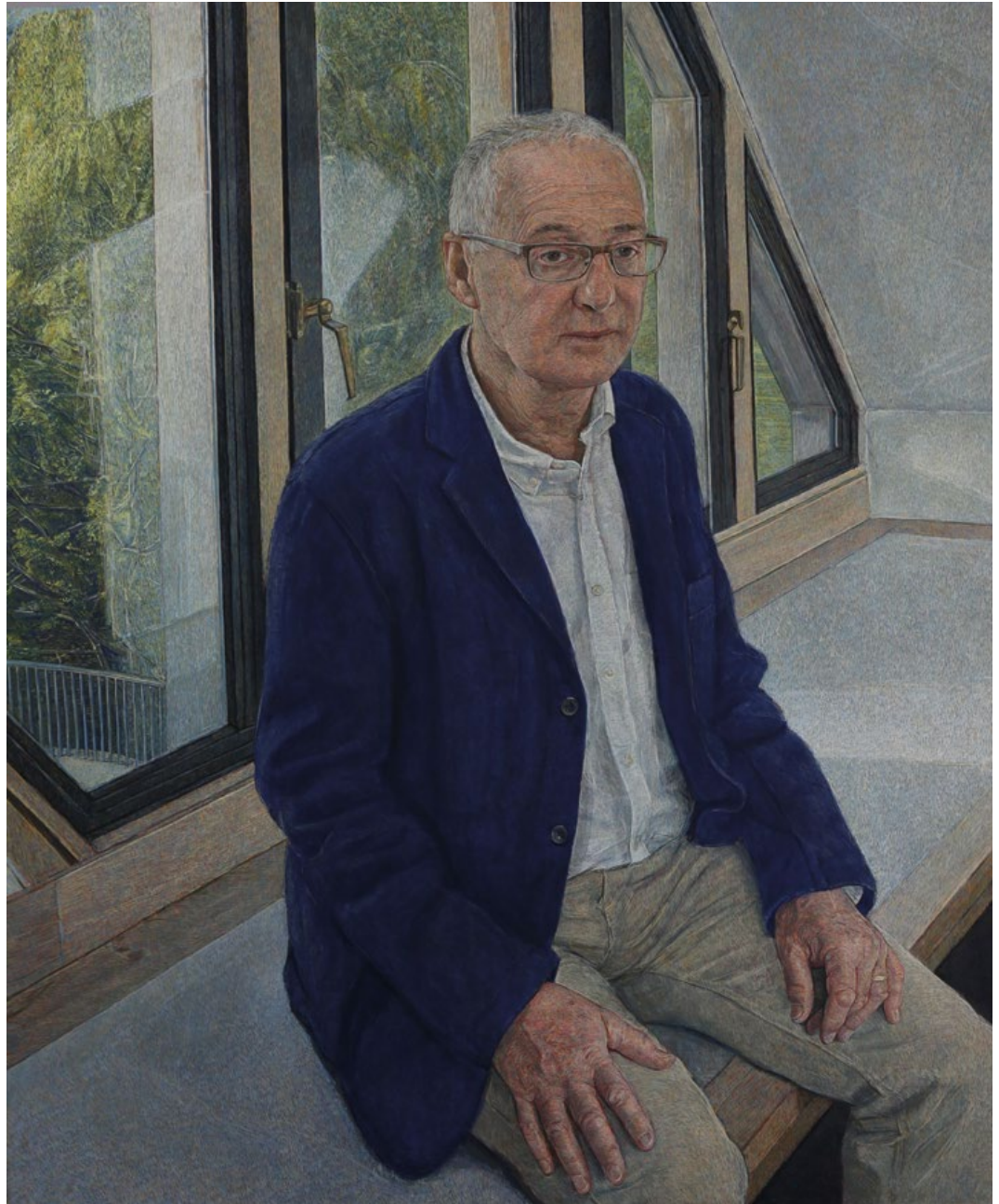
My Words Fly Up,
My Thoughts Remain Below

122 x 87 cm (48 x 34 ins)
Egg tempera

Tristan Rees Roberts

122 x 100 cm (48 x 39 ins)

Egg tempera



John Wonnacott CBE Hon RP



Back Yard Studio, with an Old Man Painting

120 x 90 cm (47 x 35 ins)
Oil

The changing sky filled shape between the houses dominates a growing set of backyard studio paintings.



Back Yard Netball, with an Old Man Drawing

90 x 120 cm (35 x 47 ins)
Oil

When the girls took over my yard for their netball practice, they left me no choice but to start another dance series.

Painting Grenfell,
A Night Portrait

50 x 60 cm (20 x 24 ins)
Oil

I chose to stop drawing at Grenfell when the authorities covered over the top stories of the tower. My resulting unfinished paintings maintain a disturbing presence on the end wall of my studio.



Neale Worley RP NEAC



The Sproule Family

130 x 100 cm (51 x 39 ins)

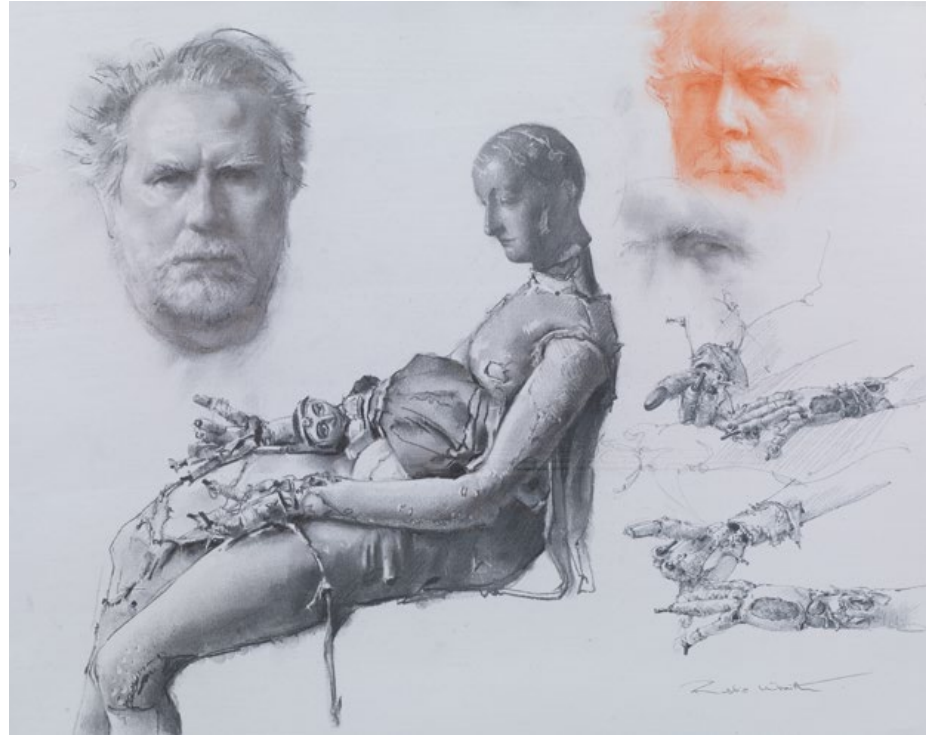
Oil

Robbie Wraith RP



Miscellany

37 x 48 cm (15 x 19 ins)
Charcoal & pencil



Erasmia

40 x 30 cm (16 x 12 ins)
Charcoal

Martin Yeoman RP NEAC SPS



Kevin

45 x 30 cm (18 x 12 ins)
Oil

A portrait of Kevin in the living room.



Self Portrait

45 x 30 cm (18 x 12 ins)
Oil

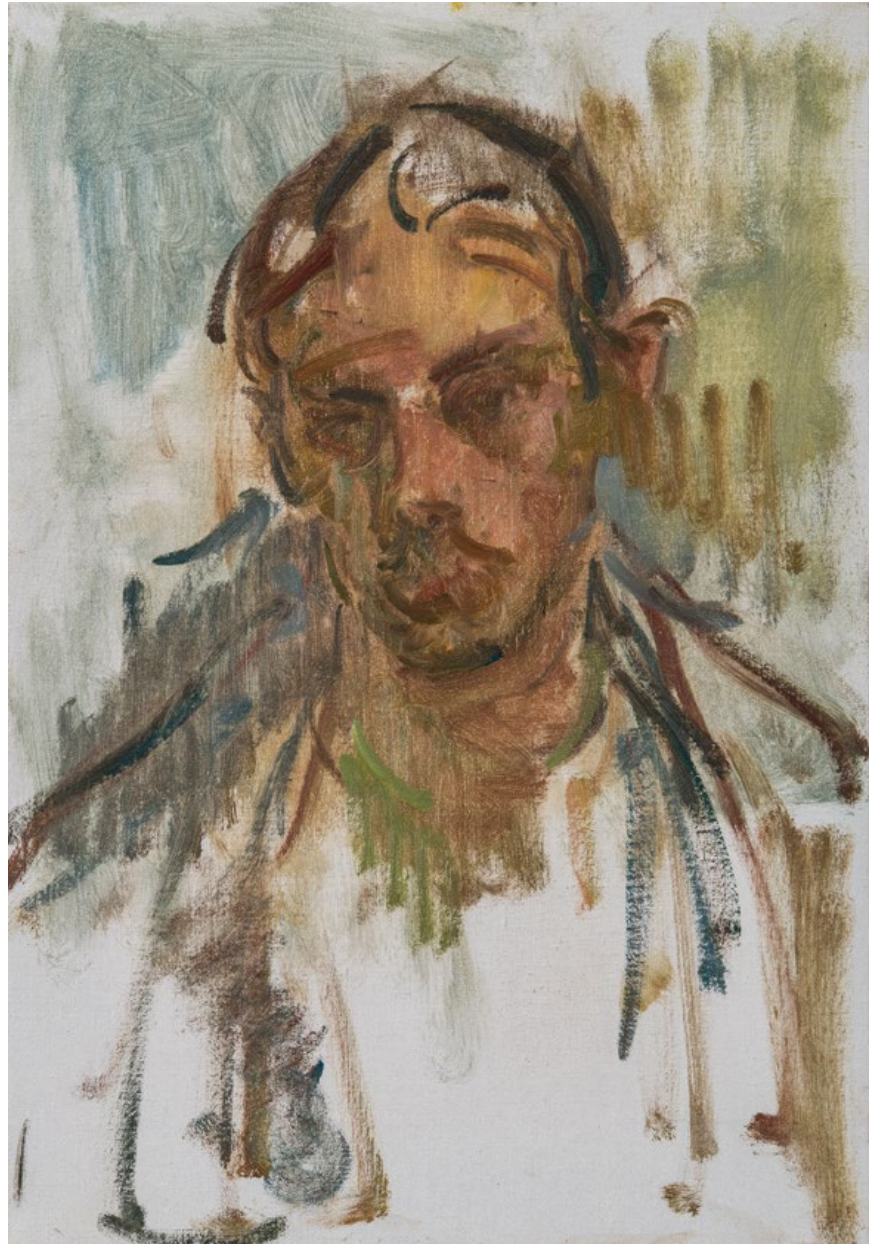
One of a number of self portraits painted within the studio at home.

George, Oil Sketch

50 x 35 cm (20 x 14 ins)

Oil

A portrait sketch of Martin's son George under electric light. This preliminary sketch is one of a number of paintings currently being worked. George is wearing a Bhutanese coat purchased in Nepal in the late 1980s.







Catalogue 2022

Catalogue 2022

ALASTAIR ADAMS PPRP

- 1 *Sir Steve Smith, Vice-Chancellor,
University of Exeter 2002–2020*
Oil
153 x 102 cm (60 x 40 ins)
NFS
- 2 *Professor Sir David Eastwood,
Vice-Chancellor, University
of Birmingham 2009–2021*
Oil
106 x 79 cm (41 x 31 ins)
NFS
- 3 *Professor Dame Sally Davies, Master
of Trinity College, Cambridge 2019–*
Oil
102 x 79 cm (40 x 31 ins)
NFS

FREDERICK ALBROW

- 4 *Martina*
Oil
50 x 40 cm (20 x 16 ins)
£1,800
- 5 *Self Portrait Looking Forward*
Oil
30 x 18 cm (12 x 7 ins)
£1,600

RICHARD ALLEN

- 6 *Self Portrait*
Oil
30 x 24 cm (12 x 9 ins)
£1,800

JEREMY ANDREWS

- 7 *Giorgia*
Oil
30 x 23 cm (12 x 9 ins)
£1,707

MARY JANE ANSELL

- 8 *Beauty and Valour*
Oil on aluminium
30 x 30 cm (12 x 12 ins)
£3,600

THOMAS ARTHURTON

- 9 *Portrait Study*
Graphite
30 x 40 cm (12 x 16 ins)
£975

OLIVIA ARTS

- 10 *Giulio*
Oil
60 x 50 cm (24 x 20 ins)
£2,750

IDO AZIZ

- 11 *Mom*
Oil
120 x 100 cm (47 x 39 ins)
NFS

MARILYN BAILEY

- 12 *Brian Smyth Artist*
Oil
36 x 30 cm (14 x 12 ins)
£1,500

NICK BASHALL

- 13 *Jane Hasell-McCosh*
Oil
60 x 45 cm (24 x 18 ins)
NFS

CAROLINE BAYS PS

Invited by Anthony Connolly RP

- 14 *Reflection with Clouds*
Oil
41 x 36 cm (16 x 14 ins)
£1,900

STEWART BECKETT

- 15 *Artistic Toil*
Oil
60 x 40 cm (24 x 16 ins)
£1,000

FRANCES BELL RP AROI

- 16 *Andrew Festing*
Oil
75 x 65 cm (30 x 26 ins)
NFS

- 17 *Femi*
Oil
120 x 110 cm (47 x 43 ins)
£10,500

- 18 *Gillian*
Oil
91 x 71 cm (36 x 28 ins)
NFS

- 19 *Self*
Oil
41 x 36 cm (16 x 14 ins)
£4,500

TIM BENSON RP NEAC PROI

- 20 *Portrait of a Man*
Oil
41 x 31 cm (16 x 12 ins)
£2,200

- 21 *Lockdown Selfie*
Oil
41 x 31 cm (16 x 12 ins)
NFS

- 22 *Nick Frost*
Oil
157 x 61 cm (62 x 24 ins)
NFS

ASHLEY BIRCH

- 23 *Jodie and Isla (Mother and Child)*
Oil
47 x 35 cm (19 x 14 ins)
NFS

- 24 *Ava*
Graphite
42 x 30 cm (17 x 12 ins)
£3,000

JANE BOND RP NEAC

- 25 *Etta*
Oil
70 x 60 cm (28 x 24 ins)
NFS

MARTIN BROOKS RP

- 26 *Portrait of a Boy*
Oil
30 x 24 cm (12 x 9 ins)
£1,950

PETER BROWN RP PNEAC PS RBA ROI

- 27 *Ned at 13*
Oil
31 x 25 cm (12 x 10 ins)
£2,750
- 28 *Ella in the Kitchen with Sweet Peas*
Oil
41 x 31 cm (16 x 12 ins)
£3,850
- 29 *Self Portrait with Light*
Oil
31 x 25 cm (12 x 10 ins)
£2,750

SARAH BROWN

- 30 *Arboretum*
Oil & linoprint
40 x 58 cm (16 x 23 ins)
£3,400

VINCENT MICHAEL BROWN

- 31 *Hawthornes II (Self Portrait with Family)*
Acrylic
121 x 89 cm (48 x 35 ins)
£6,500

MARTYN BURDON

- 32 *Michael Sheen*
Pencil
45 x 35 cm (18 x 14 ins)
£4,000

HILLARY BUTTERWORTH

- 33 *Millie*
Oil
20 x 25 cm (8 x 10 ins)
£300

DAVID CALDWELL RP

- 34 *Adam Younis (with Cactus)*
Oil
150 x 100 cm (59 x 39 ins)
£5,500

- 35 *Self Portrait*
Oil
32 x 25 cm (13 x 10 ins)
£3,950
- 36 *Penny*
Oil
45 x 46 cm (18 x 18 ins)
£2,750

STEVE CALDWELL

- 37 *Carl*
Acrylic
30 x 21 cm (12 x 8 ins)
£1,750

- 38 *Mr Fuller Resting*
Acrylic
30 x 21 cm (12 x 8 ins)
£1,750

ALEX CALLAWAY

- 39 *Fortitude*
Oil
38 x 28 cm (15 x 11 ins)
NFS

WILL CALVER

- 40 *Self Portrait in Red Scarf*
Oil
25 x 20 cm (10 x 8 ins)
£2,000

STEVE CANNON

- 41 *Self Portrait with Peace Lily*
Oil
24 x 20 cm (9 x 8 ins)
£2,200

CHANEL CHA

- 42 *Dreaming*
Oil
97 x 66 cm (38 x 26 ins)
£6,000

MARK CHEN

- 43 *Self Portrait*
Oil
180 x 90 cm (71 x 35 ins)
£7,000

SHONA CHEW

- 44 *Self Portrait Drawing*
Pencil
31 x 23 cm (12 x 9 ins)
NFS

- 45 *Mary Ratcliffe*
Oil
55 x 75 cm (22 x 30 ins)
NFS

TOM COATES RP HNEAC Hon PS Hon RBA

- 46 *My Grandson Matthew, Reading in the Studio*
Oil
51 x 61 cm (20 x 24 ins)
NFS
- 47 *Telling a Yarn, The Cornish Fisherman*
Oil
91 x 61 cm (36 x 24 ins)
£4,500

DAVID COBLEY RP NEAC

- 48 *By the Pool*
Oil
102 x 107 cm (40 x 42 ins)
NFS
- 49 *Gateway*
Oil
26 x 21 cm (10 x 8 ins)
NFS

Catalogue 2022 continued...

VANIA COMORETTI

- 50 *Studio-Eyes*
Watercolour, indian ink & pastel
33 x 18 cm (13 x 7 ins)
£1,650

ANTHONY CONNOLLY RP

- 51 *Octavia Minoprio*
Oil
60 x 50 cm (24 x 20 ins)
NFS

- 52 *Cab*
Oil
60 x 50 cm (24 x 20 ins)
NFS

- 53 *ACCA*
Oil
60 x 50 cm (24 x 20 ins)
NFS

- 54 *AMTC*
Pencil
90 x 70 cm (35 x 28 ins)
NFS

CATHERINE CREANEY

- 55 *Care*
Oil
80 x 70 cm (31 x 28 ins)
NFS

TOM CROFT

- 56 *Looking Back*
Oil
51 x 41 cm (20 x 16 ins)
NFS

BELINDA CROZIER

- 57 *Noreen*
Graphite
50 x 38 cm (20 x 15 ins)
NFS

NEIL CUNNING

- 58 *Late Night Research*
Oil
31 x 23 cm (12 x 9 ins)
£350

NICK CUTHELL

- 59 *Georgina Beyer MNZM JP*
Oil
92 x 92 cm (36 x 36 ins)
NFS

LANTIAN D

- 60 *Man and a Window*
Oil
195 x 130 cm (77 x 51 ins)
NFS

- 61 *Under the Breathing Eyelids*
(Jordan Peterson II)
Oil
77 x 51 cm (30 x 20 ins)
NFS

SAIED DAI RP NEAC

- 62 *Alison Jaques*
Oil
61 x 46 cm (24 x 18 ins)
NFS

- 63 *Derek Paravicini and*
Professor Adam Ockelford
Oil
122 x 135 cm (48 x 53 ins)
NFS

SAM DALBY RP

- 64 *Ian Black*
Oil
59 x 42 cm (23 x 17 ins)
NFS

- 65 *Ian Black*
Oil
35 x 30 cm (14 x 12 ins)
NFS

- 66 *Phoebe*
Pencil & chalk
36 x 26 cm (14 x 10 ins)
NFS

SIMON DAVIS RP RBSA

- 67 *Shapla*
Oil
102 x 68 cm (40 x 27 ins)
£6,000

- 68 *Zahra*
Oil
70 x 50 cm (28 x 20 ins)
£3,000

- 69 *Death of the Self*
Oil
70 x 50 cm (28 x 20 ins)
£3,000

- 70 *Taslina*
Oil
25 x 20 cm (10 x 8 ins)
£800

HELEN DAVISON

- 71 *Red and Blue*
Oil
20 x 15 cm (8 x 6 ins)
£650

PHOEBE DICKINSON

- 72 *Girl in a Pinafore*
Oil
61 x 90 cm (24 x 35 ins)
NFS

OLIVIA DUNN

- 73 *Self Portrait of my Inner Child*
Oil
29 x 29 cm (11 x 11 ins)
£1,150

SAMANTHA ELLIS FOX

- 74 *Caught*
Graphite, charcoal & pastel
12 x 17 cm (5 x 7 ins)
£600

MIRIAM ESCOFET RP

- 75 *Portrait of HM Queen Elizabeth II
for the Foreign Commonwealth
and Development Office*
Oil
140 x 100 cm (56 x 40 ins)
NFS
- 76 *Portrait of Nicolas Priestley*
Oil
90 x 70 cm (35 x 28 ins)
NFS
- 77 *Portrait of Elara*
Oil
50 x 40 cm (20 x 16 ins)
NFS

EUGENE EVANS

- 78 *Skeletal Preoccupations*
Oil
66 x 57 cm (26 x 22 ins)
£8,200

PETER FIELD

- 79 *Carlos D'Agaro*
Oil
60 x 42 cm (24 x 17 ins)
£5,000

RICHARD FOSTER PRP

- 80 *Mrs Angus Watson of Touch*
Oil
60 x 50 cm (24 x 20 ins)
NFS
- 81 *The Undergraduate*
Oil
50 x 40 cm (20 x 16 ins)
NFS

- 82 *Lock-in Spring 2021*
Oil
35 x 35 cm (14 x 14 ins)
NFS

JACK FREEMAN

- 83 *Tim and Pat with Arms Linked*
Oil
80 x 120 cm (31 x 47 ins)
NFS
- 84 *Self Portrait with Motifs*
Oil
50 x 40 cm (20 x 16 ins)
NFS

FELICITY GILL

- 85 *Limited Palette Self Portrait*
Oil
18 x 13 cm (7 x 5 ins)
£1,200

ELOISE GILLOW

- 86 *Sharon*
Oil
116 x 89 cm (46 x 35 ins)
NFS

DAVID GLEESON

- 87 *Self: Within, Without*
Charcoal
79 x 59 cm (31 x 23 ins)
£2,500

ARINA GORDIENKO

- 88 *Life in Crimson Flame*
Oil
91 x 122 cm (36 x 48 ins)
£14,000

ANDREW GOW

- 89 *Jason Price, Violin Dealer*
Oil
60 x 50 cm (24 x 20 ins)
NFS

DAVID GRAHAM RP

- 90 *Miss Luz*
Oil
69 x 56 cm (27 x 22 ins)
NFS
- 91 *Miss America*
Oil
99 x 76 cm (39 x 30 ins)
NFS
- 92 *Pensive*
Oil
102 x 91 cm (40 x 36 ins)
£12,000
- 93 *Martha at St Mark's, Venice*
Oil
102 x 86 cm (40 x 34 ins)
£15,000

FIONA GRAHAM-MACKAY

- 94 *Lemn Sissay and George Frederick Handel
Bronze, The Foundling Museum*
Oil
46 x 51 cm (18 x 20 ins)
£5,000

ROBERT GRINDROD

- 95 *Eleanor*
Oil
51 x 41 cm (20 x 16 ins)
NFS

ELLY HADJIPATERAS

- 96 *Following On*
Oil
80 x 70 cm (31 x 28 ins)
£1,800

JAMES HAGUE RP

- 97 *Self Portrait*
Oil
36 x 51 cm (14 x 20 ins)
NFS

Catalogue 2022 continued...

98 *Man in Grey Jumper*
Oil
30 x 41 cm (12 x 16 ins)
NFS

99 *Man in Yellow Jumper*
Oil
36 x 28 cm (14 x 11 ins)
NFS

100 *Untitled*
Oil
30 x 41 cm (12 x 16 ins)
Price on request

ROBIN-LEE HALL PPRP

101 *Hope*
Egg tempera
30 x 11 cm (12 x 4 ins)
£1500

102 *Will*
Egg tempera
15 x 20 cm (6 x 8 ins)
£1,500

CLEMENTINE HANBURY

103 *Self (Composition III)*
Oil
35 x 25 cm (14 x 10 ins)
£1,500

MARTYN HARRIS

104 *Sharing*
Oil
80 x 135 cm (31 x 53 ins)
£4,500

JULIA HAWKINS ROI

105 *Anastasia Reading*
Oil
76 x 51 cm (30 x 20 ins)
£1,750

JULIE HELD NEAC

Invited by **Melissa Scott-Miller RP NEAC RBA**

106 *Susan – My Sister*
Oil
66 x 77 cm (26 x 30 ins)
£5,750

JACK HEWITT

107 *Self Portrait as a Ghost in a Mirror*
Oil
30 x 27 cm (12 x 11 ins)
£500

ANDREW HITCHCOCK

108 *Self Portrait*
Egg tempera
41 x 30 cm (16 x 12 ins)
£2,250

CURTIS HOLDER

109 *Gaylene*
Coloured pencil
88 x 64 cm (35 x 25 ins)
NFS

RUTH HOLT

110 *Joe*
Oil
18 x 14 cm (7 x 6 ins)
£1,000

111 *Self Portrait*
Oil
35 x 29 cm (14 x 11 ins)
£1,600

LAURA HOPE

112 *Micheal*
Coloured pencil, wax pastels,
oil stick & acrylic gouache
85 x 60 cm (33 x 24 ins)
NFS

BENJAMIN HOPE RP NEAC PS ROI RSMA

113 *Andrew*
Oil
33 x 33 cm (13 x 13 ins)
£1,300

114 *Self Portrait 11/02/2022*
Oil
41 x 31 cm (16 x 12 ins)
£1,600

115 *Nicholas*
Oil
31 x 26 cm (12 x 10 ins)
NFS

116 *Leah*
Oil
76 x 51 cm (30 x 20 ins)
£2,500

OWAIN HUNT

117 *Woman with Wilted Flower*
Oil
35 x 25 cm (14 x 10 ins)
£1,000

AARON ILLSLEY

118 *Keep Silent*
Oil
90 x 70 cm (35 x 28 ins)
£25,000

USVA INEI

Invited by **Art Academy London**

119 *Faces of Self Isolation: Oliver*
Acrylic
96 x 61 cm (38 x 24 ins)
£1,450

KATHERINE JACKSON

120 *Self Portrait by a Door II*
Watercolour
31 x 28 cm (12 x 11 ins)
£450

ANDREW JAMES RP NEAC

121 *Autumn Self Portrait*
Oil
101 x 70 cm (40 x 28 ins)
£9,500

122 *Portrait of Joanna*
Oil
56 x 45 cm (22 x 18 ins)
£3,500

123 *Portrait of Robert*
Oil
56 x 45 cm (22 x 18 ins)
£3,500

HERO JOHNSON

124 *Self with Pin Badge from The Met*
Oil
45 x 35 cm (18 x 14 ins)
NFS

125 *Dame Harriet Walter*
Oil
70 x 60 cm (28 x 24 ins)
NFS

JEANNIE KINSLER

126 *Introspection*
Oil
30 x 30 cm (12 x 12 ins)
£900

PRESLAV KOSTOV

127 *The Girl with the Lucky Charm*
Oil
61 x 46 cm (24 x 18 ins)
£2,300

SANDRA KUCK

128 *Purple Kimono*
Oil
68 x 43 cm (27 x 17 ins)
£40,000

PETER KUHFIELD RP NEAC

129 *Anita Lasker-Wallfisch MBE*
Oil
42 x 39 cm (17 x 15 ins)
NFS

130 *Henrietta Montgomerie*
Oil
56 x 56 cm (22 x 22 ins)
NFS

KATHRYN KYNOCH RP RGI

131 *Gordon Gibb – Architect*
Oil
97 x 71 cm (38 x 28 ins)
£10,000

132 *Lucy Allison*
Oil
91 x 71 cm (36 x 28 ins)
£8000

133 *Hannah in Furry Bonnet*
Oil
61 x 76 cm (24 x 30 ins)
£8,000

TEDI LENA

134 *Amazing Sculptor Isabel Langtry*
Oil
100 x 80 cm (39 x 31 ins)
£4,500

ZHAO LI

135 *Transparent Night*
Oil
30 x 50 cm (12 x 20 ins)
£5,600

TOM LOFFILL

136 *Self Portrait with Striped Shirt
and Illustrations*
Oil
50 x 40 cm (20 x 16 ins)
£1,650

137 *Sheila & Jeff*
Acrylic
95 x 65 cm (37 x 26 ins)
NFS

KATHLEEN LOWE

138 *Self Portrait*
Oil
49 x 46 cm (19 x 18 ins)
£2,000

JENNIFER MAIDMENT

139 *Ruth, Portrait of my Mother*
Oil
30 x 21 cm (12 x 8 ins)
£1,700

JOSHUA MARLAND-WATERHOUSE**Invited by Simon Davis RP RBSA**

140 *Prof Sir Paul Curran*
Oil
140 x 96 cm (55 x 38 ins)
NFS

KENNY MCKENDRY

141 *The Belfast Bookseller*
Oil
26 x 28 cm (10 x 11 ins)
£2,200

JUNE MENDOZA OBE RP ROI

142 *Chris Jagger*
Oil
114 x 89 cm (45 x 35 ins)
NFS

143 *John Rendall*
Oil
89 x 114 cm (35 x 45 ins)
NFS

STEPHANIE MILLS

144 *The Forgotten*
Graphite & charcoal
43 x 33 cm (17 x 13 ins)
£1,800

Catalogue 2022 continued...

JORDAN MORGAN

- 145 *Self Portrait #7*
Graphite, conté & pastel
43 x 28 cm (17 x 11 ins)
£2,600

ANTHONY MORRIS RP NEAC

- 146 *Mathew, Charlotte and Max*
Oil
65 x 81 cm (26 x 32 ins)
NFS
- 147 *The Bird Watcher Self Portrait*
Oil
61 x 46 cm (24 x 18 ins)
NFS
- 148 *Portrait Study*
Oil
37 x 26 cm (15 x 10 ins)
NFS

KEITH MORTON

- 149 *Self-3*
Oil
29 x 24 cm (11 x 9 ins)
£1,245

CHARLES MOXON

Invited by Emma Wesley RP

- 150 *Portrait of Gerald Hellman*
Oil
35 x 45 cm (14 x 18 ins)
NFS

JOHN MURPHY-WOOLFORD

- 151 *Self Portrait, 28–29 May*
Oil
15 x 12 cm (6 x 5 ins)
£400

PER ELOF NILSSON RICKLUND

- 152 *Shared Space*
Oil
35 x 45 cm (14 x 18 ins)
£5,600

STEFAN ORLOWSKI

- 153 *Trinity*
Oil
84 x 84 cm (33 x 33 ins)
NFS

THYMIAN OSBORN

Invited by John Walton Hon RP

- 154 *I'll be ready in 5 minutes!*
Oil
61 x 45 cm (24 x 18 ins)
£2,000

ANTHONY PALLISER

Invited by Antony Williams VPRP NEAC PS

- 155 *Sir John Boorman*
Oil
100 x 73 cm (39 x 29 ins)
NFS

HARRIET PATTINSON

- 156 *Goldfish Bowl*
Oil
70 x 60 cm (28 x 24 ins)
NFS

MANTAS PODERYS

- 157 *Sara*
Pastel
30 x 60 cm (12 x 24 ins)
NFS

ANASTASIA POLLARD RP

- 158 *Self Portrait*
Oil
20 x 15 cm (8 x 6 ins)
NFS

- 159 *James*
Oil
25 x 20 cm (10 x 8 ins)
NFS

- 160 *Kate*
Oil
25 x 20 cm (10 x 8 ins)
£1,200

- 161 *Serene*
Oil
25 x 20 cm (10 x 8 ins)
£1,000

LAURA QUINN HARRIS

- 162 *Déjà Vu*
Oil
27 x 19 cm (11 x 7 ins)
£1,500

SAMIR RAKHMANOV

- 163 *Self Portrait in the Studio*
Oil
50 x 50 cm (20 x 20 ins)
£4,320

ALAN RAMSEY

Invited by Neale Worley RP NEAC

- 164 *Portrait of a Woman*
Oil
33 x 41 cm (13 x 16 ins)
NFS

CARL RANDALL

Invited by James Hague RP

- 165 *Hairdressers at Night*
Oil
57 x 120 cm (22 x 47 ins)
NFS

GAIL REID

- 166 *Judgement*
Oil
122 x 92 cm (48 x 36 ins)
£4,000

NICK RICHARDS

- 167 *Self Portrait*
Oil
46 x 23 cm (18 x 9 ins)
£600

MICHAEL RIDDLE

- 168 *Min in Hoodie*
Oil
31 x 31 cm (12 x 12 ins)
£1,900

TANIA RIVILIS

- 169 *Kupka's Dog*
Oil
80 x 80 cm (31 x 31 ins)
£5,850

ALEX ROONEY

- 170 *Ben*
Charcoal
38 x 35 cm (15 x 14 ins)
£1,200

MARK ROSCOE RP

- 171 *Cardinal Vincent Nichols*
Oil
76 x 63 cm (30 x 25 ins)
NFS
- 172 *Patrick Mitton*
Oil
76 x 63 cm (30 x 25 ins)
NFS
- 173 *Emily + Joey*
Oil
100 x 100 cm (39 x 39 ins)
£30,000

STEPHEN ROSE

- 174 *Self Portrait in the Time of Covid*
Oil
127 x 91 cm (50 x 36 ins)
NFS

ILARIA ROSSELLI DEL TURCO

- 175 *Alice – Moon*
Oil
40 x 40 cm (16 x 16 ins)
£1,950
- 176 *Self Portrait (After Parmigianino)*
Mezzotint engraving
12 x 10 cm (5 x 4 ins)
NFS

JAMIE ROUTLEY

- 177 *Artist and Patron, Portrait of Daren Burney*
Oil
123 x 101 cm (48 x 40 ins)
NFS
- 178 *The Rawleys*
Oil
90 x 90 cm (35 x 35 ins)
NFS

CAROLINE RUDGE

- 179 *Both Each Other*
Egg tempera
60 x 50 cm (24 x 20 ins)
NFS

SUSAN RYDER RP NEAC HSWA

- 180 *Dame Angela McClean DBE FRS*
Oil
91 x 71 cm (36 x 28 ins)
NFS
- 181 *David Dunn, Head Master of Yarm School, 1999*
Oil
97 x 76 cm (38 x 30 ins)
NFS

- 182 *Alexander and Julia with Slipper, Bella and Treacle*
Oil
86 x 71 cm (34 x 28 ins)
NFS

CHARLIE SCHAFER

- 183 *Giorgina*
Oil
50 x 40 cm (20 x 16 ins)
NFS

MELISSA SCOTT-MILLER RP NEAC RBA

- 184 *Self Portrait with Growing Family*
Oil
60 x 60 cm (24 x 24 ins)
£2,500

- 185 *Nighttime Self Portrait with Artist's Family*
Oil
30 x 25 cm (12 x 10 ins)
£2,500

- 186 *Four Week Old Grandson!*
Oil
30 x 25 cm (12 x 10 ins)
NFS

- 187 *Avery*
Oil
50 x 40 cm (20 x 16 ins)
£2,000

MICHAEL SEYMOUR

- 188 *Portrait of a Young Woman*
Graphite
40 x 30 cm (16 x 12 ins)
£1,200

MICHAEL SLUSAKOWICZ

- 189 *Pink Fluff (the Double Portrait of Sirena)*
Oil
90 x 90 cm (35 x 35 ins)
NFS

VASILI SMIRNOV

- 190 *Maxim*
Oil
70 x 55 cm (28 x 22 ins)
NFS

HANIE SOLTANI

- 191 *Lyrata*
Gouache
48 x 34 cm (19 x 13 ins)
£850

JAMES SPENCER

- 192 *Self Portrait*
Oil
26 x 21 cm (10 x 8 ins)
£350

Catalogue 2022 continued...

JAMES STEWART

- 193 *Back to It*
Oil
120 x 120 cm (47 x 47 ins)
£4,000

PHOEBE-LOUISE STEWART CARTER

- 194 *Mathilde*
Oil
45 x 55 cm (18 x 22 ins)
£3,000

- 195 *Twenty Two*
Oil
60 x 45 cm (24 x 18 ins)
NFS

JEFF STULTIENS RP

- 196 *Michael Harding*
Oil
112 x 92 cm (44 x 36 ins)
NFS

- 197 *Lee Maxted-Page*
Oil
130 x 150 cm (51 x 59 ins)
NFS

- 198 *Hannah Cornwell*
Oil
76 x 61 cm (30 x 24 ins)
NFS

BENJAMIN SULLIVAN RP NEAC

- 199 *Terry McAvoy*
Oil
60 x 46 cm (24 x 18 ins)
NFS

- 200 *Her Majesty The Queen*
Oil
60 x 46 cm (24 x 18 ins)
NFS

GIDEON SUMMERFIELD

- 201 *Holocaust Survivor Freddie Knoller (100)*
Pencil
30 x 21 cm (12 x 8 ins)
£6,500

LOUIS SZAPARY

- 202 *Portrait of Phoebe*
Oil
60 x 40 cm (24 x 16 ins)
NFS

MICHAEL TAYLOR RP

- 203 *Rodney Williams*
Oil
100 x 75 cm (39 x 30 ins)
NFS

- 204 *Self Portrait (Feet)*
Pencil
36 x 26 cm (14 x 10 ins)
£1,200

DOMINIC THIAN

- 205 *Self Portrait with Palette*
Oil
61 x 46 cm (24 x 18 ins)
£2,000

DAVID THOMAS

- 206 *Kathleen*
Watercolour
52 x 70 cm (20 x 28 ins)
£1,500

DAPHNE TODD OBE PPRP HRNEAC

- 207 *David Rebbitt, Past Head of
Uckfield Community College*
Oil
61 x 46 cm (24 x 18 ins)
NFS

SIMON TURVEY

- 208 *Self Portrait*
Oil
20 x 15 cm (8 x 6 ins)
£875

RENÉ TWEEHUYSEN

- 209 *Finn Dreamy*
Oil & tempera
30 x 24 cm (12 x 9 ins)
£4,000

NNEKA UZOIGWE

- 210 *Narcissus (Self Portrait)*
Oil
85 x 66 cm (33 x 26 ins)
NFS

JUSTAS VARPUCANSKIS

- 211 *Self Portrait*
Oil
20 x 20 cm (8 x 8 ins)
£5,175

ISABELLA WATLING

- 212 *Giorgia*
Oil
60 x 50 cm (24 x 20 ins)
NFS

- 213 *Irene*

Oil
70 x 60 cm (28 x 24 ins)
NFS

COLIN WATSON

- 214 *Ayoub*
Oil
30 x 25 cm (12 x 10 ins)
£2,600

MIKE WATTLES

Invited by Heatherley's School of Art

- 215 *Indigo Self Portrait*
Oil
81 x 66 cm (32 x 26 ins)
NFS

LAURA WENMAEKERS

- 216 *Kavinya*
Oil
36 x 26 cm (14 x 10 ins)
£1,200

EMMA WESLEY RP

- 217 *'On Equal Terms': Portrait of Dame Julie Lydon OBE, Vice-Chancellor of the University of South Wales*
Acrylic
91 x 108 cm (36 x 43 ins)
NFS
- 218 *Dame Julie Lydon OBE – sketch*
Pencil
52 x 76 cm (20 x 30 ins)
NFS
- 219 *'The Philosopher': Sketch of Professor Jane Heal*
Pencil
44 x 85 cm (17 x 33 ins)
NFS

JITRACHOTE WHITE

- 220 *Me*
Charcoal & chalk
96 x 66 cm (38 x 26 ins)
NFS

TOBY WIGGINS RP

- 221 *Nyika Mutendera*
Oil
50 x 40 cm (20 x 16 ins)
NFS
- 222 *Margo Kinsey (1921–2018)*
Oil
40 x 30 cm (16 x 12 ins)
NFS
- 223 *Self Portrait under a Bulb*
Pencil & charcoal
30 x 20 cm (12 x 8 ins)
£1,750
- 224 *Jon Sells, Sculptor*
Oil
20 x 16 cm (8 x 6 ins)
£1,250

ANTONY WILLIAMS VPRP NEAC PS

- 225 *My Words Fly Up, My Thoughts Remain Below*
Egg tempera
122 x 87 cm (48 x 34 ins)
£42,500
- 226 *Gyles Brandreth*
Egg tempera
39 x 31 cm (15 x 12 ins)
£18,500
- 227 *Tristan Rees Roberts*
Egg tempera
122 x 100 cm (48 x 39 ins)
NFS

PAULA WILSON

- 228 *Self Portrait: Scarves*
Oil
60 x 40 cm (24 x 16 ins)
£3,250

JOHN WONNACOTT CBE Hon RP

- 229 *Back Yard Studio, with an Old Man Painting*
Oil
120 x 90 cm (47 x 35 ins)
NFS
- 230 *Back Yard Netball, with an Old Man Drawing*
Oil
90 x 120 cm (35 x 47 ins)
NFS
- 231 *Painting Grenfell, A Night Portrait*
Oil
50 x 60 cm (20 x 24 ins)
NFS

NEALE WORLEY RP NEAC

- 232 *The Sproule Family*
Oil
130 x 100 cm (51 x 39 ins)
NFS

ROBBIE WRAITH RP

- 233 *Portrait of Sylvie*
Oil
51 x 41 cm (20 x 16 ins)
NFS
- 234 *Erasmia*
Charcoal
40 x 30 cm (16 x 12 ins)
NFS
- 235 *Miscellany*
Charcoal & pencil
37 x 48 cm (15 x 19 ins)
NFS
- 236 *Portrait*
Charcoal
48 x 34 cm (19 x 13 ins)
NFS

MARTIN YEOMAN RP NEAC SPS

- 237 *George, Oil Sketch*
Oil
50 x 35 cm (20 x 14 ins)
NFS
- 238 *Kevin*
Oil
45 x 30 cm (18 x 12 ins)
NFS
- 239 *Self Portrait*
Oil
45 x 30 cm (18 x 12 ins)
NFS

JIAXUAN YI

- 240 *Why*
Oil
58 x 30 cm (23 x 12 ins)
£4,300

FLORENCE YUQING

- 241 *Imogen*
Watercolour
30 x 21 cm (12 x 8 ins)
£1,500

In honour of The Queen's Platinum Jubilee

PIETRO ANNIGONI (1910–88)

Lent by the National Portrait Gallery

242 *Queen Elizabeth II*

Tempera grassa on paper panel

1969

216 x 197 cm (85 x 78 ins)

JUNE MENDOZA OBE RP ROI

The Royal Greenjackets – Winchester Barracks

243 *Her Majesty Queen Elizabeth II*

Oil on canvas

1987

89 x 74 cm (35 x 29 ins)

SUSAN RYDER RP NEAC

The Royal Automobile Club

244 *Her Majesty The Queen*

Oil on Canvas

1996

154 x 102 cm (61 x 40 ins)

ANDREW FESTING MBE PPRP

Royal Hospital, Chelsea

245 *Her Majesty The Queen*

Oil on Canvas

1999

238 x 144 cm (94 x 57 ins)

ANTONY WILLIAMS RP NEAC PS

Private Collection

246 *HM The Queen*

Egg tempera

1995

122 x 96 cm (48 x 38 ins)

ROBBIE WRAITH RP

Collection of the artist

247 *Study for Her Majesty the Queen for the*

Portrait commissioned for Shell

Oil on panel

1998

26 x 20 cm (10 x 8 ins)

BENJAMIN SULLIVAN RP NEAC

Collection of the artist

200 *Her Majesty The Queen*

Oil on canvas

2018

60 x 46 cm (24 x 18 ins)

MIRIAM ESCOFET RP

Foreign, Commonwealth & Development Office

75 *Portrait of HM Queen Elizabeth II*

Oil on linen over panel

2020

140 x 100 cm (56 x 40 ins)



BUTTERY AND DURABLE,
THE HANDMADE PAINT
THAT YOU DREAM OF

MICHAELHARDING.CO.UK



Driven by innovation,
a synthetic brush that
performs at a
professional level

Using our unique brush making expertise to provide artists an innovative alternative: the new Artists' Oil Synthetic Hog brush range. Available in a range of sizes across six shapes, this range was curated by artists for artists and handmade at our brush factory in England, which has been producing fine art brushes by hand since the 1850s.

Uncompromising quality and performance,
now in a synthetic.

winsornewton.com



By Appointment to
HRH The Prince of Wales
Manufacturers of Artists' Materials
Winsor & Newton
London



